

# SLG

## SOUTH LONDON GALLERY

65 Peckham Road  
London SE5 8UH

### OPEN

Tuesday—Sunday 12—6pm  
Closed Mondays

24 hour info: 020 7703 9799  
Tel: 020 7703 6120  
SMS: 07518 025 286  
mail@southlondongallery.org  
www.southlondongallery.org

Games & Theory is supported by  
The Polish Cultural Institute.

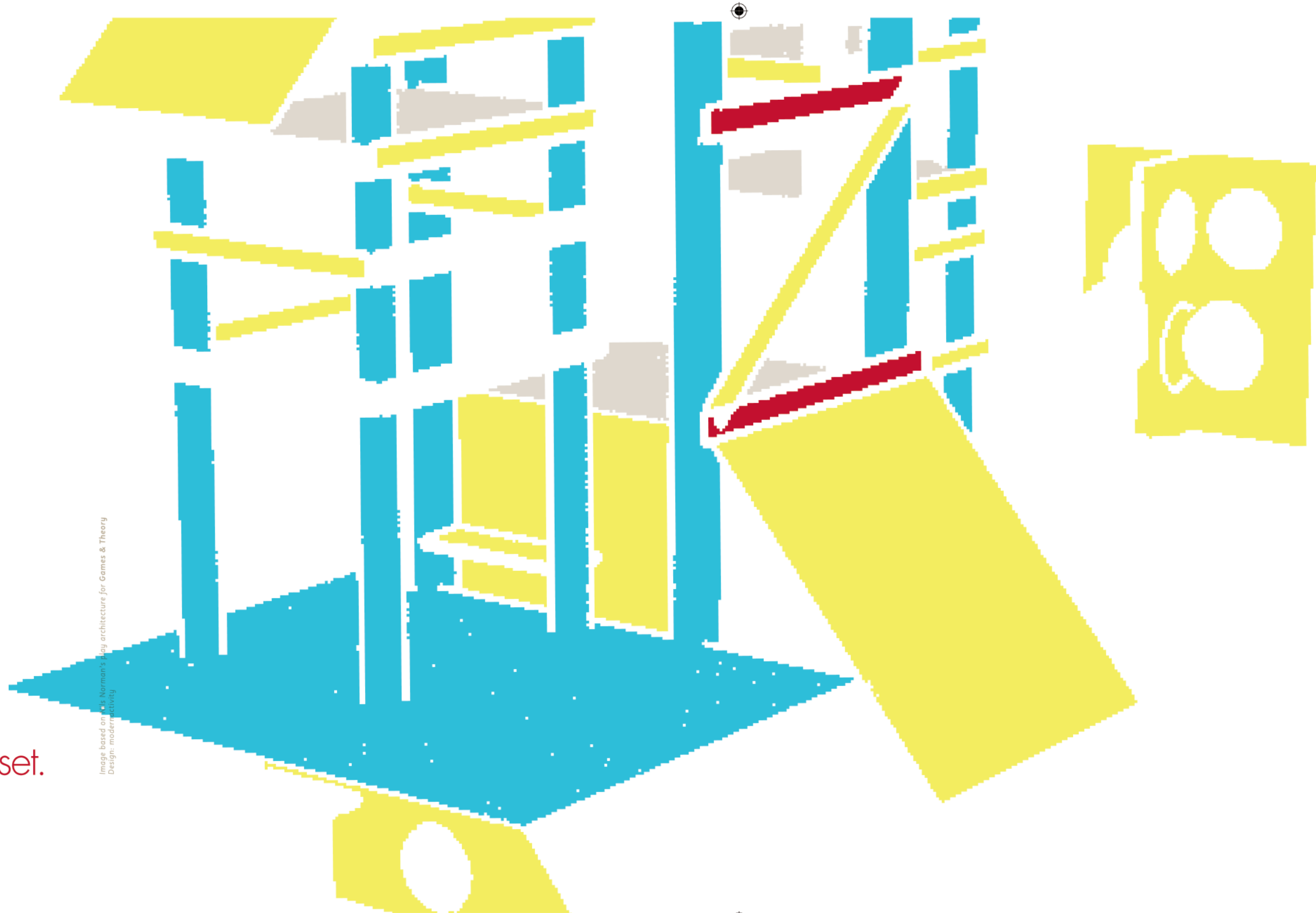


The South London Gallery receives core funding from Arts Council England and Southwark Council and ongoing support from the Paul Hamlyn Foundation, Helen Thorpe, Outset Contemporary Art Fund and the Big Lottery Fund.



outset.

Image based on *Norman's Play* architecture for Games & Theory  
Design: modernreactivity



# GAMES & THEORY

South London Gallery  
11 July – 7 September 2008

## Games & Theory

Curated by Kit Hammonds

Gustavo Artigas (Mexico), Lottie Child (UK), Marc Herbst (US), Tushar Joag (India), Jakob Kolding (Denmark), Kasia Krakowiak (Poland), George Henry Longly (UK), Marta Marcé (UK/Spain), Nils Norman (UK), Dan Shippides (UK)

**Games & Theory** brings together international contemporary artists whose diverse practices share interests in play, sports and gaming. With works shown in, on and around play architecture designed by Nils Norman, viewers are encouraged to become active participants in the exhibition.

Free play and risk-taking are key elements in childhood learning and creativity, and in the building of social skills. However, in later life these strategies are usually employed only in leisurely pursuits, often structured through regulated sports. Taking its cue from Situationist ideologies, **Games & Theory** explores the radical potential of play as a form of resistance. Street skills based on the observation of kids in Brazilian favela, dancing through the crowds in a Mumbai subway and free climbing modernist architecture, are among the ways in which these artists challenge everyday life. Through such approaches the works in this exhibition explore notions of freedom and autonomy in both personal and socio-political realms.

# EVENTS

All the events listed are free, check individual events for booking details. Please contact 020 7703 6120 or [mail@southlondongallery.org](mailto:mail@southlondongallery.org)

## OPENING EVENT

Thursday 10 July, 6.30–8.30pm, SLG

Join us, the artists and curator to celebrate the opening of **Games & Theory**. **No booking necessary.**

## GAMES: MARC HERBST

Enjoy Marc Herbst's informal games and activities around the local area. Visit the exhibition to find out times and meeting point. **No booking necessary.**

## OFFSITE PROJECT: KASIA KRAKOWIAK

Saturday 26 July & 2 August, 10–6pm

Let mobile phone technology guide you through the streets within London's old city walls. Delve into the history of London during Kasia Krakowiak's walking tour. **Contact the gallery for details of how to register.**

## MAKING PLAY LAUNCH: THE STATE OF PLAY

Sunday 27 July, 3–4.30pm, SLG

This event introduces **Making Play**, a new SLG initiative exploring contemporary art through play, with a discussion looking at play as alternative or mainstream. The discussion takes place in the context of current government play initiatives and controversial public debates around public space, risk and participation. Speakers include curator Kit Hammonds, author of *The Play Ethic* Pat Kane, artist-in-residence Andrea Mason and Paul Durr of Play England. **Booking recommended.**

## SO SCEAUX GAMES

1–6 August, 2–5pm daily, Sceaux Gardens estate

Come and play a variety of informal, lo-fi games on Sceaux Gardens estate. This week-long local festival showcases traditional games hosted by tenants and residents as well as artist-led games with Joanna Brinton, Ruchama Hoed, Andrea Mason, Lucy Panesar, Laura Wilson and others. **This event is part of National Play Day, organised by Play England.**

## GALLERY TALK: KIT HAMMONDS

Sunday 3 August, 2pm, SLG

**Games & Theory** curator, Kit Hammonds, discusses ideas and themes of the exhibition, including creativity, freedom and the politics of play, within the built environment. **No booking necessary.**

## STREET TRAINING: LOTTIE CHILD

Sunday 3 August, 3–5pm, SLG

Be guided by Lottie Child's Street Training *Manuals* and develop your own ways of negotiating Paths of Joy and Paths of Safety through the city. This workshop, starting at the SLG and moving through the local area, combines physical activity with discussion and invites participants to consider how behaviour can determine the built environment. **Booking recommended, please wear comfortable clothing and footwear.**

## TOUR DE PLAY: GRANT LAMBIE

Saturday 9 August, 12–5pm, meet at the SLG

Join play expert and artist Grant Lambie on a cycle tour looking at playscapes as a form of outsider architecture. The tour covers local adventure playgrounds Triangle, Slade, Charlie Chaplin, Kennington, Max Roach, Rockingham and Fredericks. Young and old alike are welcome to try out some of London's largest swings, death slides and play structures. **Bring your own bike, the tour is approximately five miles long and booking is recommended.**

## LOTTIE CHILD AND CLARE CUMBERLIDGE IN CONVERSATION

Thursday 4 September, 7–9pm

Clare Cumberlidge from The General Public Agency in conversation with Lottie Child and Furtherfield.org who have been commissioned by Peckham Space to collaboratively develop Peckham Street Training. The talk includes a presentation by the artists and a conversation on participation and contemporary art in the public realm. **Booking recommended. This event is organised in association with Peckham Space. For further details contact Peckham Space on 020 7514 2299 or [info@peckhamspace.com](mailto:info@peckhamspace.com)**

## MANIFESTO FOR CHANGE: ANDREA MASON

Saturday 6 September, 2–5pm, Sceaux Gardens estate

Andrea Mason and members of **The Sceaux Gardens Estate Development Think Tank (Fun) Club** perform their Manifesto for Change. Afterwards, Mason hosts a Table Talk asking the speakers and the audience to respond to questions such as: Can art effect social change? How will we survive peak oil? What can art do? The audience includes representatives from Southwark Regeneration and Renewal, environmental activists and other specially invited guests.

# INFO

The South London Gallery is one of London's leading venues for contemporary art, presenting a challenging programme of contemporary art exhibitions, live art and off-site projects.

## ACCESS

The SLG has wheelchair access throughout its public spaces, but unfortunately is inaccessible to electric wheelchair users at present. The Gallery will be fully accessible to everyone on completion of our building project.

## TUBE

— Victoria or Oval then bus 36/436  
— London Bridge then bus 343  
— Elephant & Castle then bus 171/12

## RAIL

Peckham Rye

Limited free parking in adjacent side streets

