

*Exploring the Optical Perception of Image
within Glass*

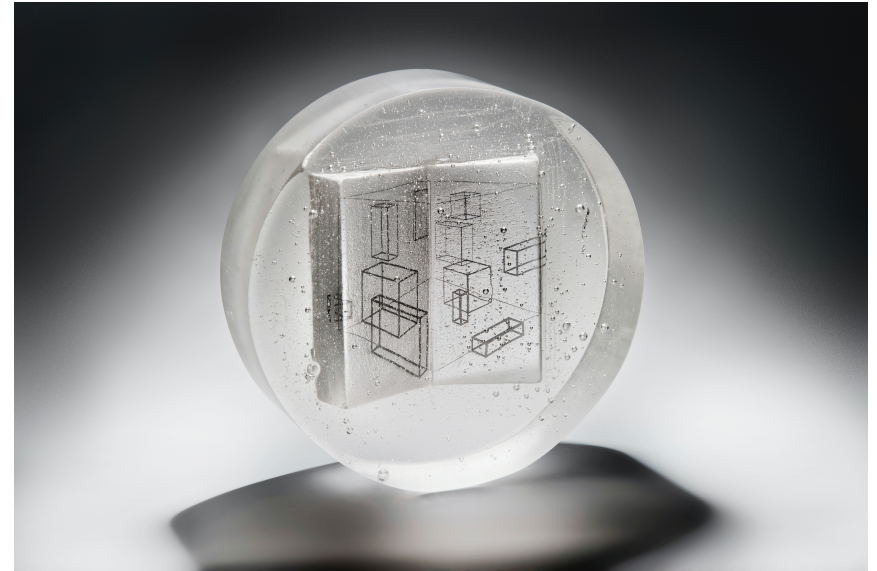
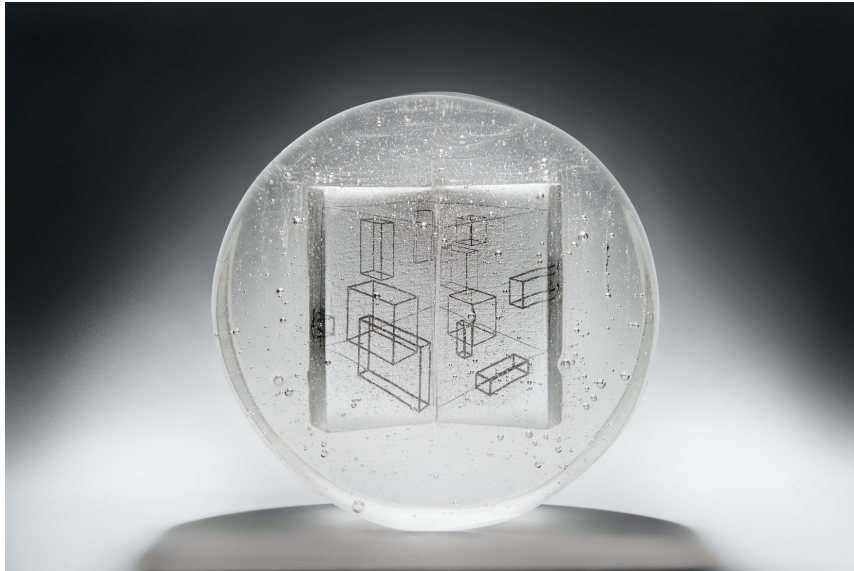
Helen Slater Stokes

PhD by practice

Glassworks

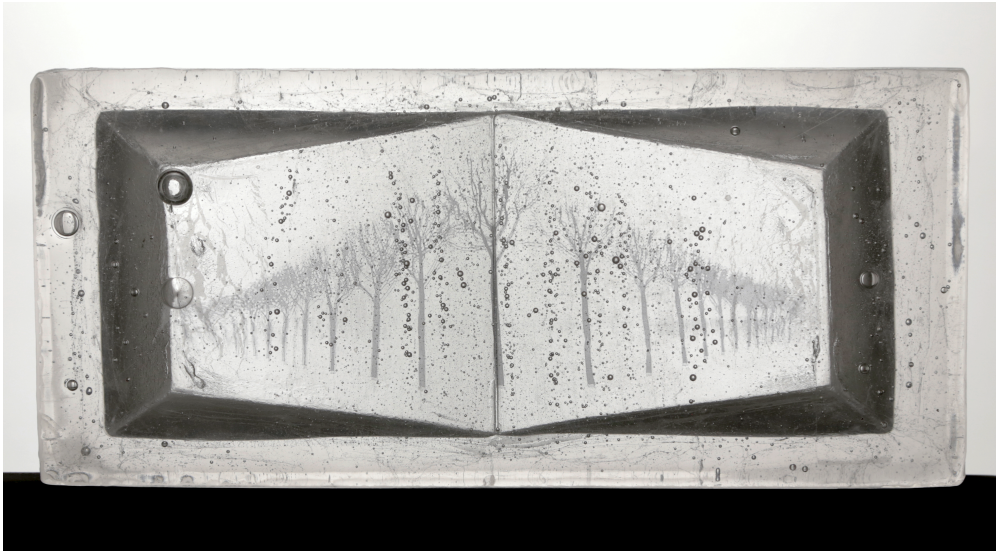
Practical Research

Reverse Perspective in Glass

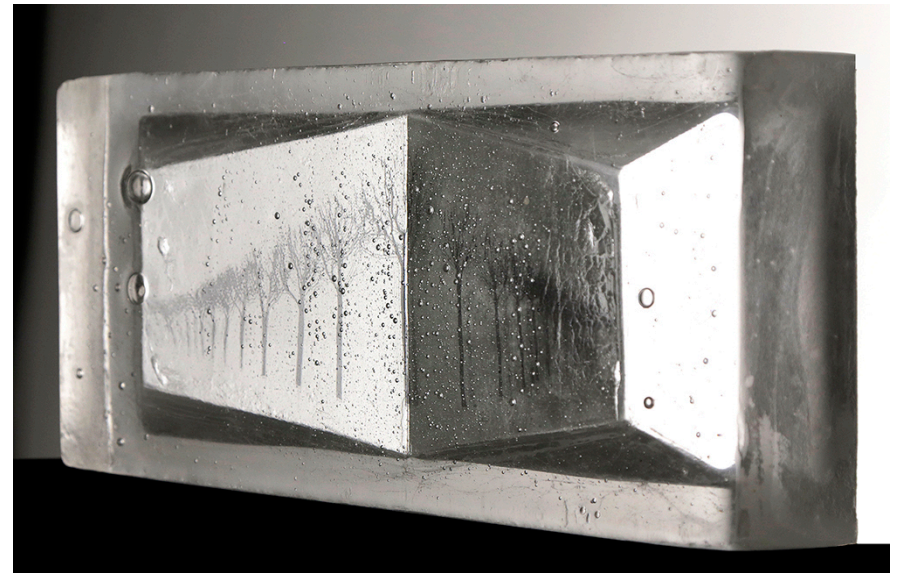


Geometric Perspective (2017) Cast glass and ceramic transfer.
42cm diameter x 12cm.
Photography by Ester Segarra

Reverse Perspective in Glass



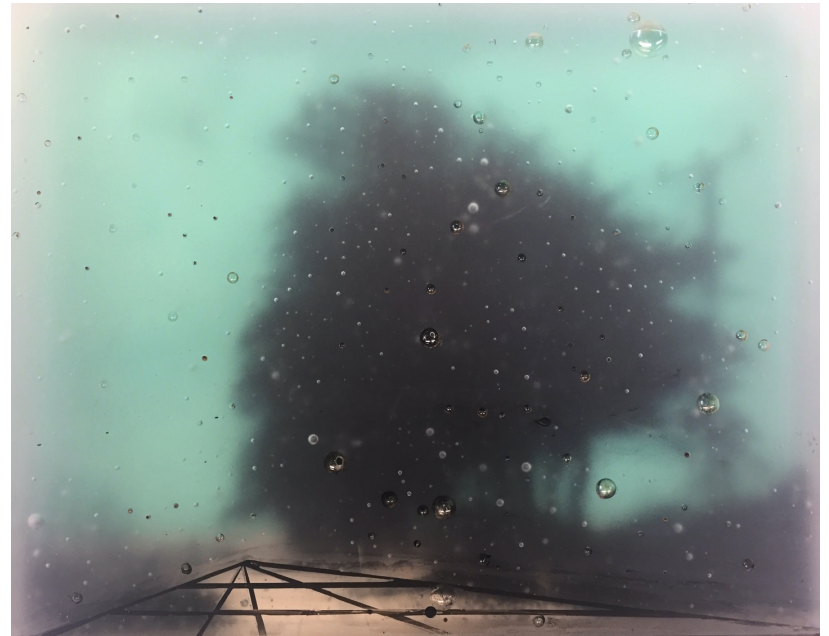
Tree line (2016) Cast glass and ceramic transfer.
48 x 25.5 x 11cm.



Defused focus and Bokeh effect



Focus (2018) Cast glass, enamel. 42 x 29 x 6cm



Bokeh grid (2018) Cast glass, enamel.
30 x 26 x 5cm.

Lenticular Glass Castings



Virtual Landscape (2018) Kiln-formed glass, ceramic transfer.
29 x 24 x 5cm
Photography by Ester Segarra



Blueprint (2018) Kiln-formed glass and ceramic transfer.
29 x 24 x 5cm
Photography by Ester Segarra

Lenticular Glass Castings



Blueprint (2018) Kiln-formed glass and ceramic transfer
29 x 24 x 5cm.

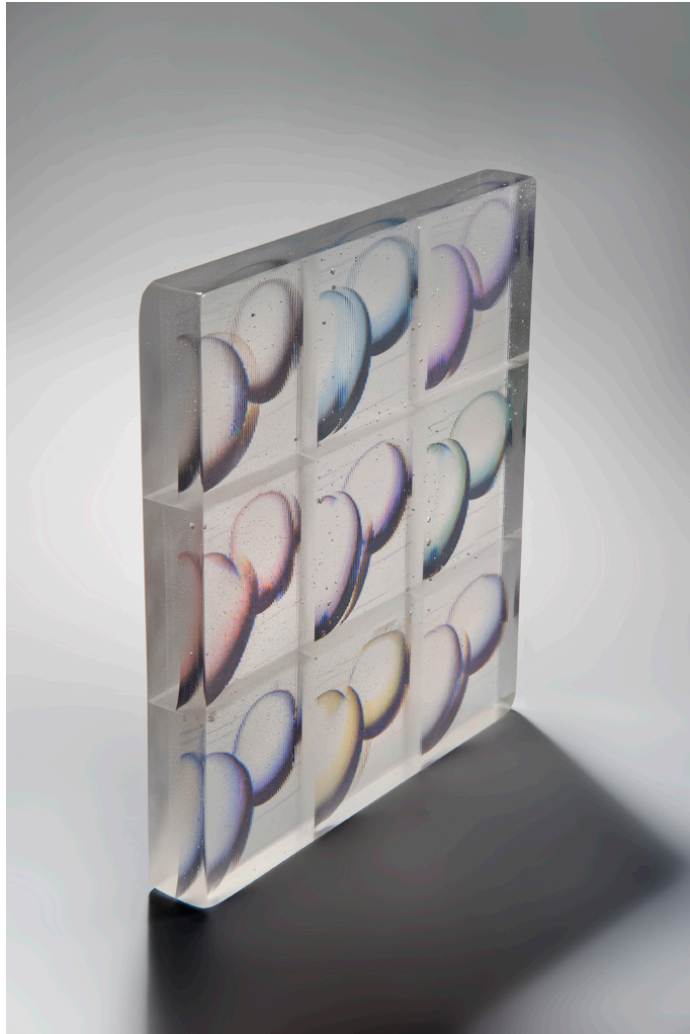


Initial drawing



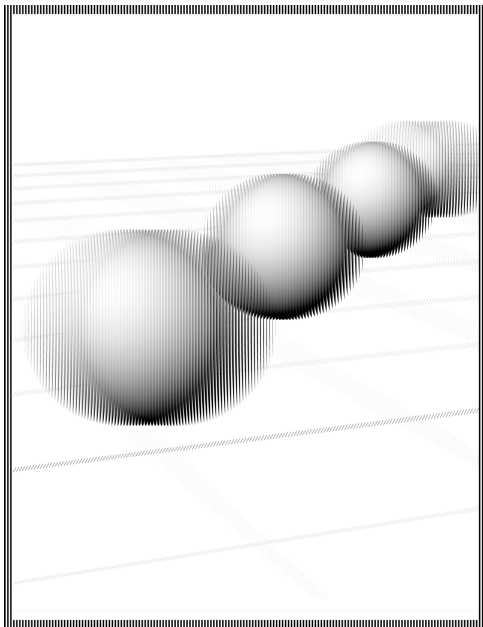
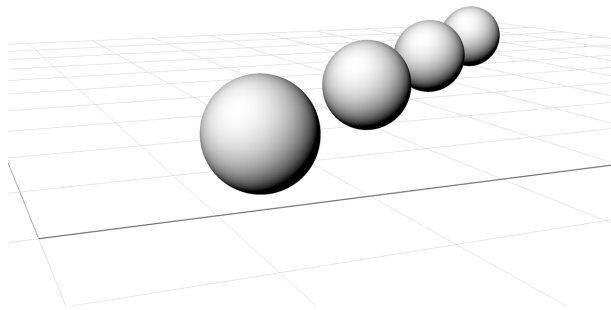
Digitally interlaced image

Lenticular Glass Casting Geometric Forms



Oculus (2019) Kiln-formed glass and ceramic transfer.
27 x 24 x 4cm.
Photography by Ester Segarra

Lenticular Glass Casting Geometric Forms



Lenticular interlaced image



Oculus (2019) Kiln-formed glass and ceramic transfer.
27 x 24 x 4cm.

Photography by Ester Segarra

Lenticular Glass Casting

Geometric Forms

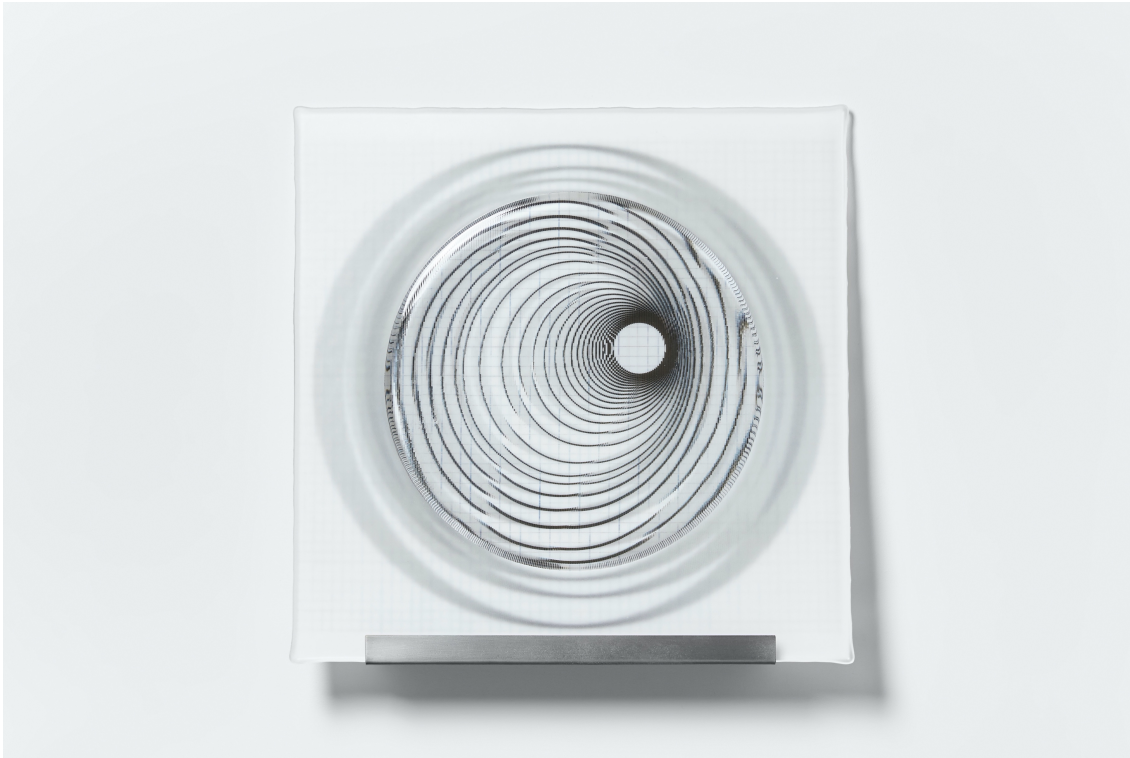


Acuity (2019) Kiln-formed glass and ceramic transfer.
27 x 24 x 4cm.
Photography by Alick Cotterill



Acuity (2019) Kiln-formed glass and ceramic transfer.
27 x 24 x 4cm.

Lenticular Glass Casting Grid Series



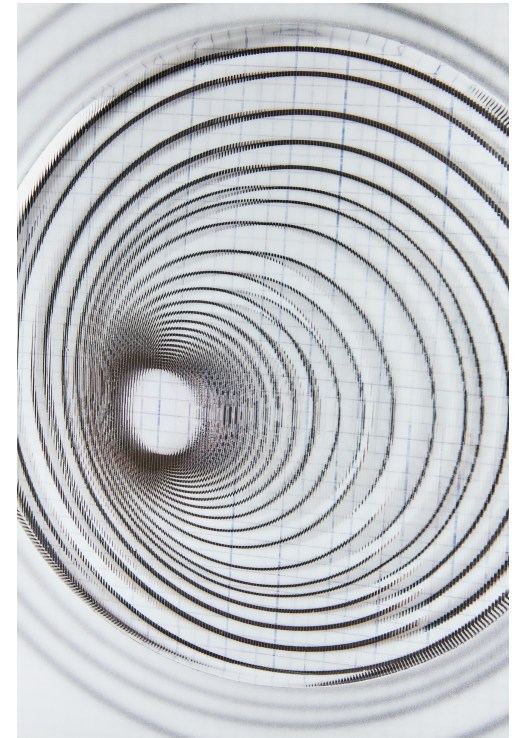
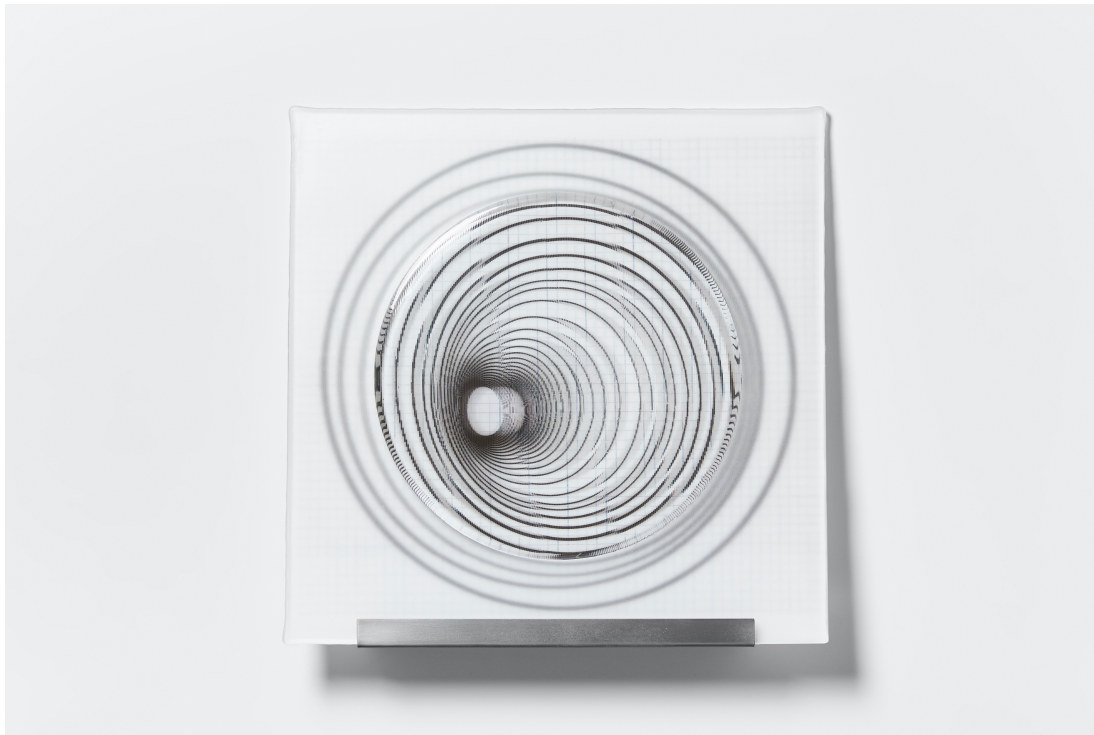
Asymmetric Vortex (2019) Kiln-formed glass, ceramic transfer, steel. 41 x 41 x 6.5cm
(Glass element 8mm thick)

Photography by Alick Cotterill



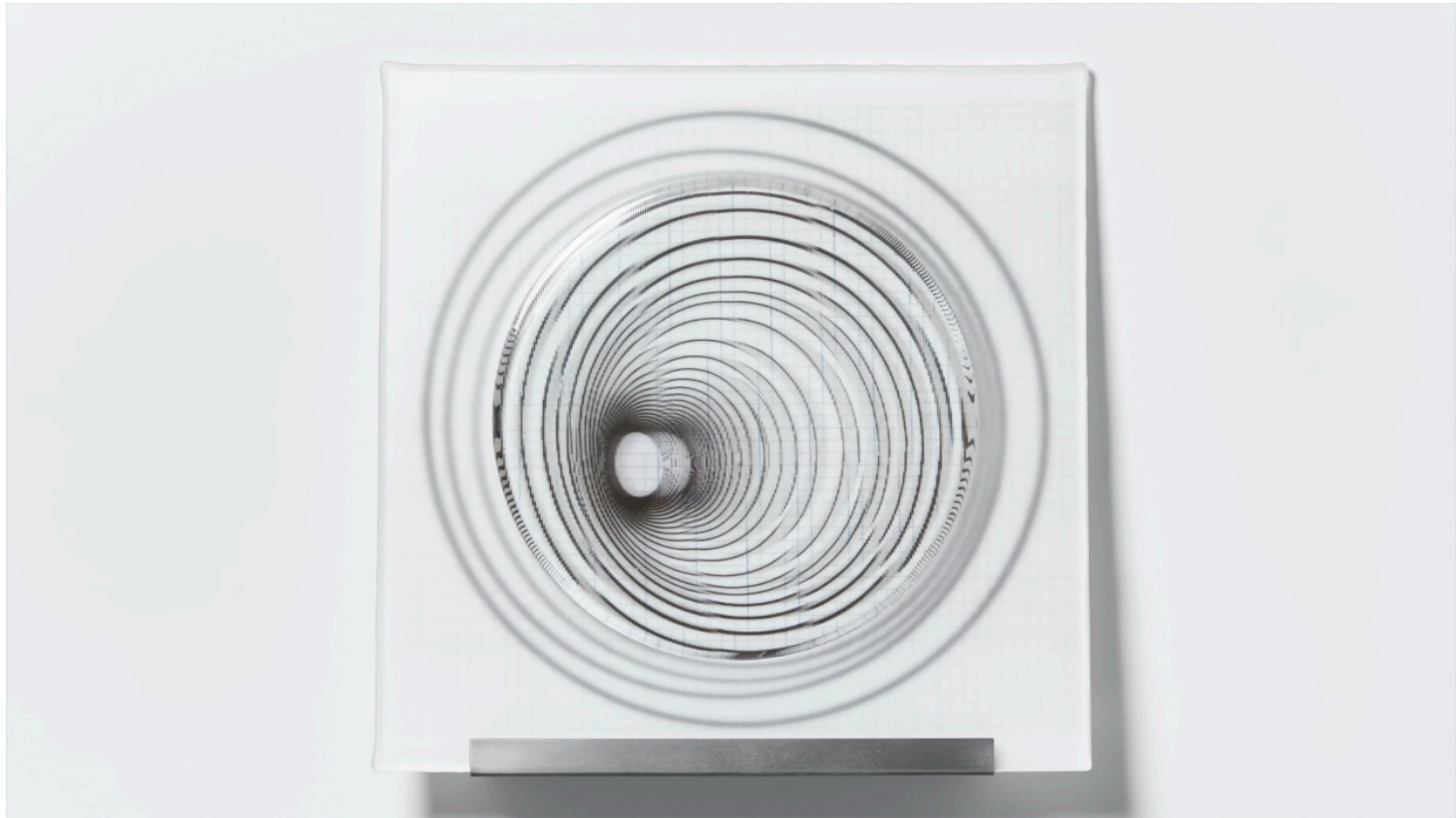
Asymmetric Vortex (2019) Kiln-formed glass, ceramic transfer, steel.
41 x 41 x 6.5cm (Glass element 8mm thick)

Lenticular Glass Casting Grid Series



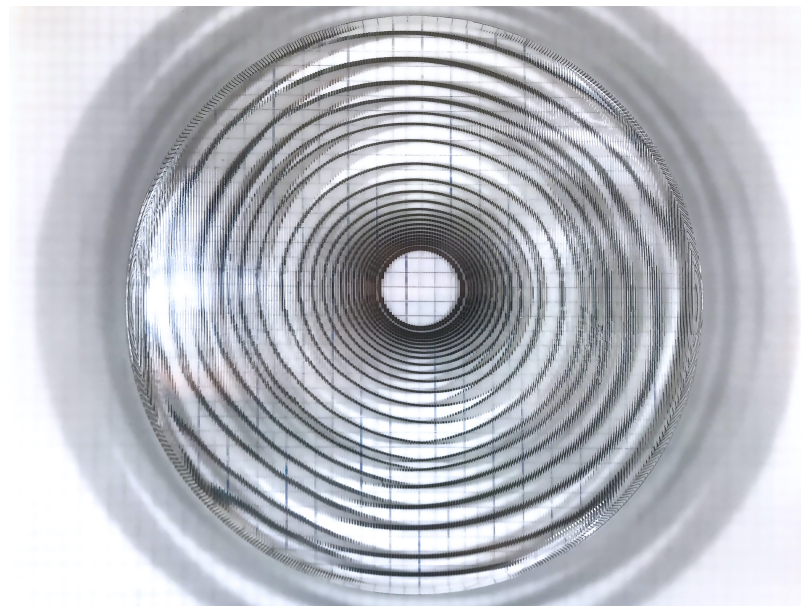
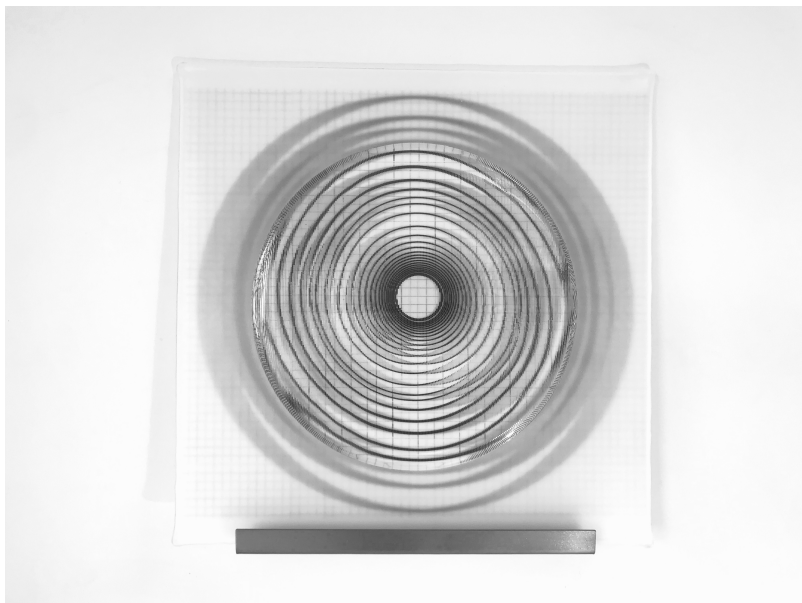
Asymmetric Cone (2019) Kiln-formed glass, ceramic transfer, steel
41 x 41 x 6.5cm (Glass element 8mm thick)

Photography by Alick Cotterill

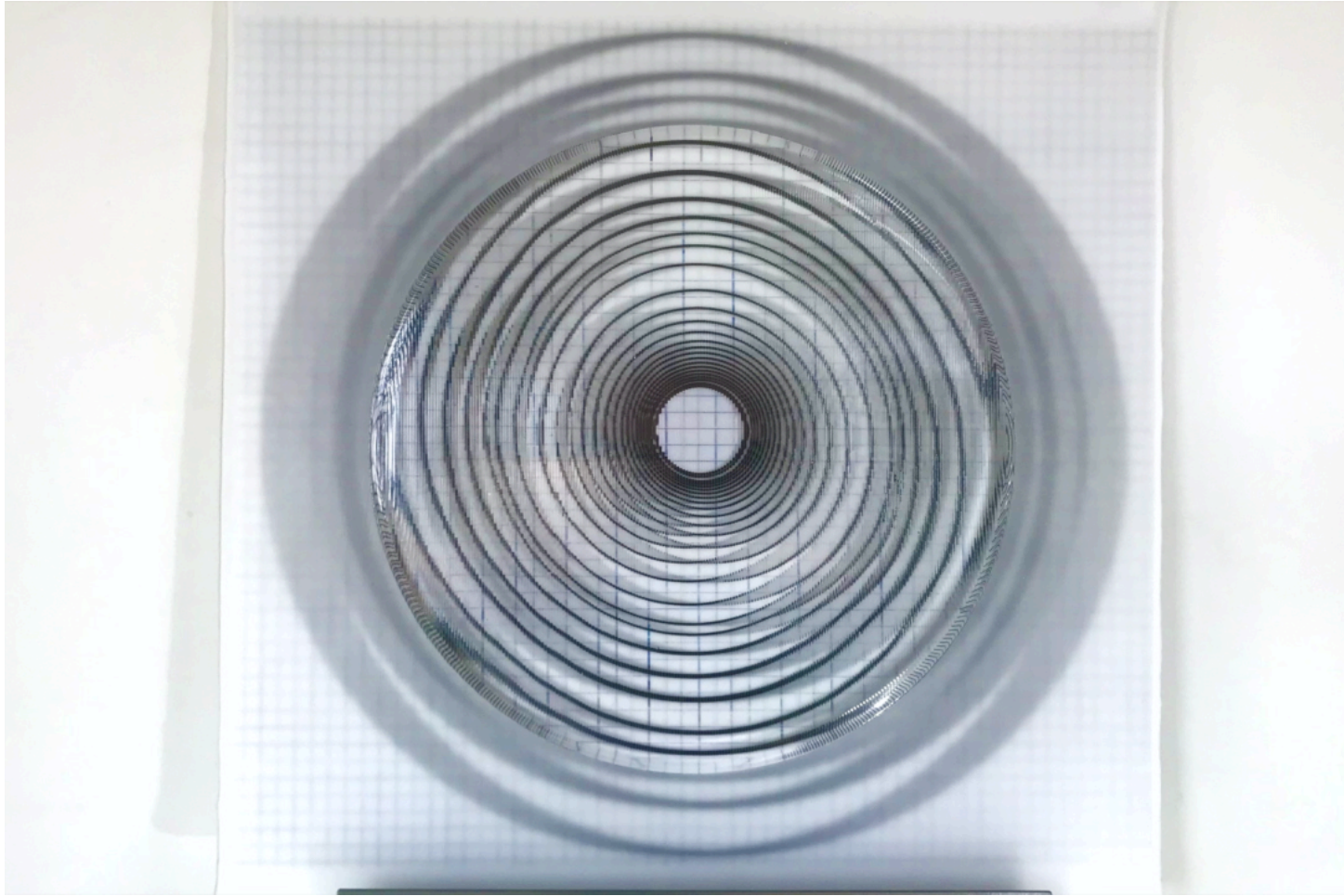


Asymmetric Cone (2019) Kiln-formed glass, ceramic transfer, steel
41 x 41 x 6.5cm (Glass element 8mm thick)

Lenticular Glass Casting Grid Series

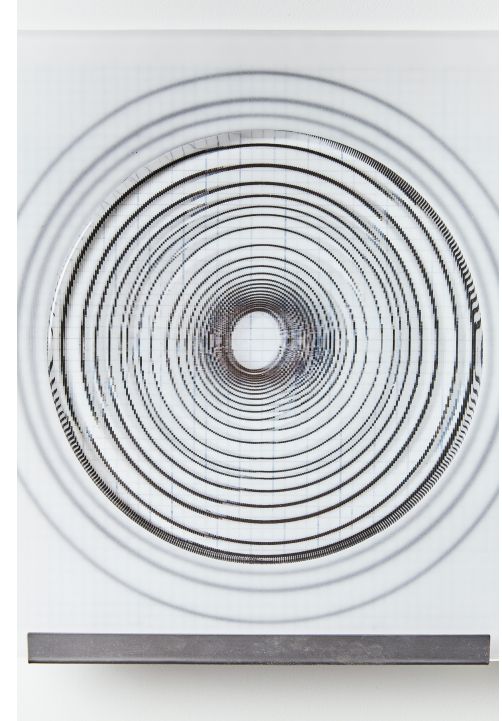


Symmetric Vortex (2019) Kiln-formed glass, ceramic transfer, steel
41 x 41 x 6.5cm (Glass element 8mm thick)



Symmetric Vortex (2019) Kiln-formed glass, ceramic transfer, steel
41 x 41 x 6.5cm (Glass element 8mm thick)

Lenticular Glass Casting Grid Series

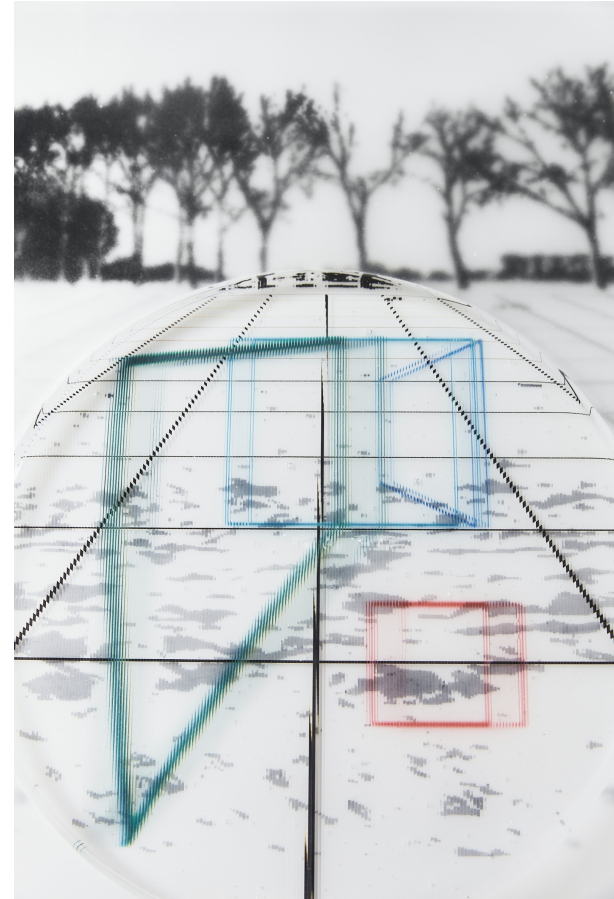


Symmetric Cone (2019) Kiln-formed glass, ceramic transfer, steel
41 x 41 x 6.5cm (Glass element 8mm thick)

Photography by Alick Cotterill

Lenticular Glass Casting

Breaking Ground



Breaking Ground (2019) Kiln-formed glass, screen printed enamel, ceramic transfer, steel
42 x 38 x 6.5cm (Glass element 1cm thick)

Photography by Alick Cotterill