

Digital toilets: for your convenience

Gail Ramster

Senior Research Associate

The Helen Hamlyn Centre for Design, Royal College of Art

<http://greatbritishpublictoiletmap.rca.ac.uk>



The Great British Public Toilet Map

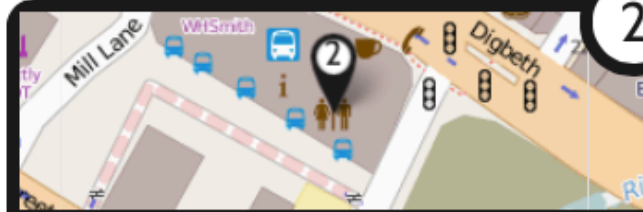
Add a toilet

Nearest Toilets



1

more info...

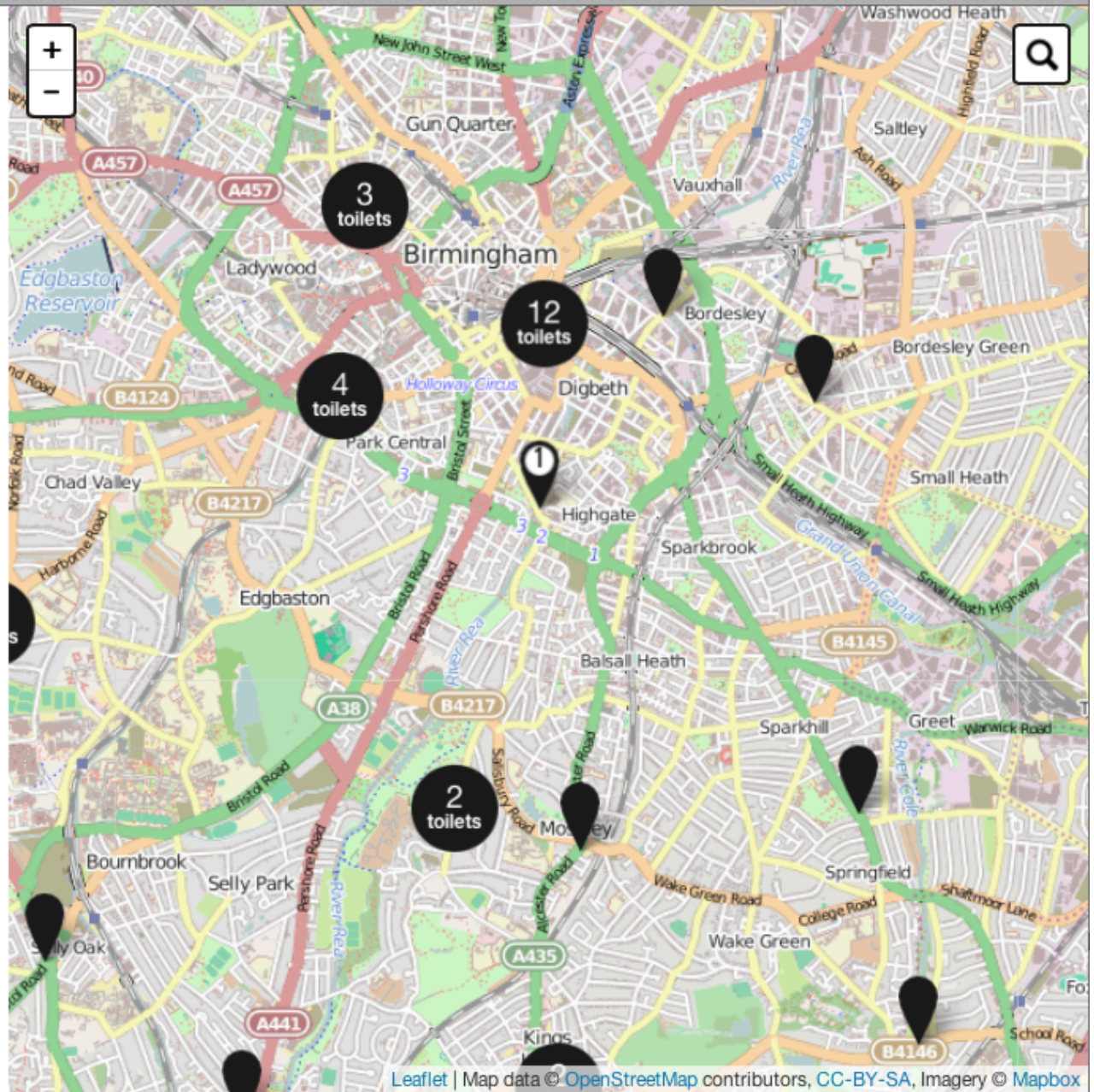


2

more info...



3





Royal College of Art

MENU ▾ RESEARCH & INNOVATION / THE HELEN HAMLYN CENTRE FOR DESIGN

THE HELEN HAMLYN CENTRE FOR DESIGN

SEARCH

IN THIS SECTION ▾

- About
- Research Projects
- Research Labs
- Student Programme
- PhD Programme
- Knowledge Exchange
- External Education
- Include Conferences
- Include 2015



The Helen Hamlyn Centre for Design at the Royal College of Art undertakes design research and projects with industry that will contribute to improving people's lives

community toilet scheme toilet block pubs
male/female unisex *“they’re often cleaner”*
public private shopping centre automatic
“I avoid drinking” childrens baby-changing
safe step-free attended clean privacy
30p public transport *“they should be free”*
“I can’t wait” water tablets IBS pregnancy
councils wheelchair-accessible crohn’s
“I don’t mind paying” parks drinking water
parking incontinence *“I wouldn’t use one”*



process people projects blog 

Neontribe

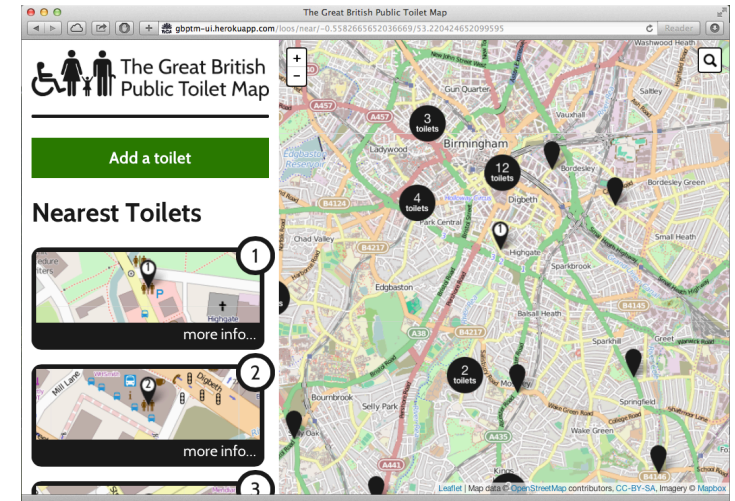
Neontribe is a web development company. We're agile and user-centered in our design and development work, producing websites and apps. If that sounds like what you need, [email us at info@neontribe.co.uk](mailto:info@neontribe.co.uk)



v.1



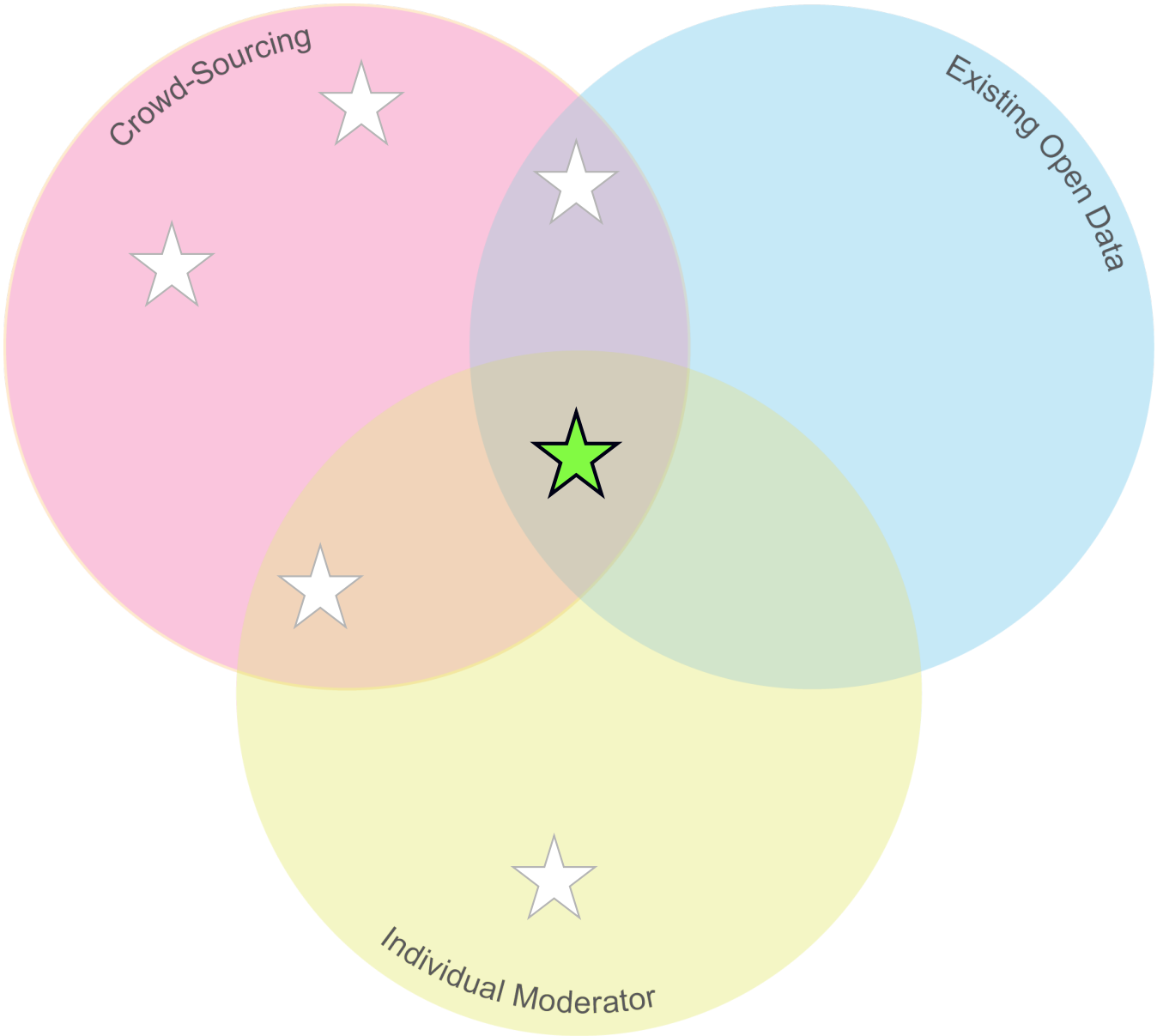
v.2



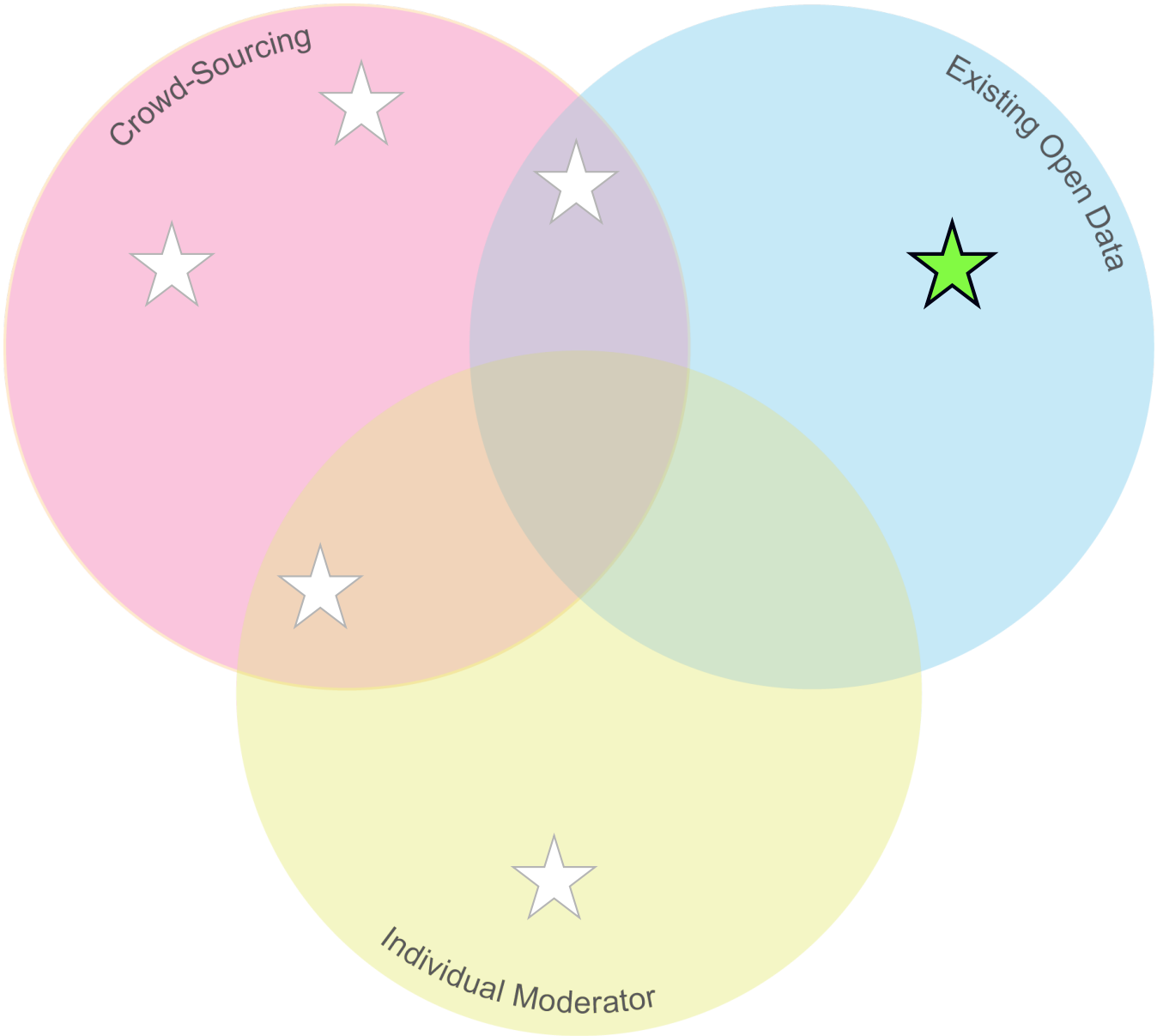
v.3



Toilet Finding Apps

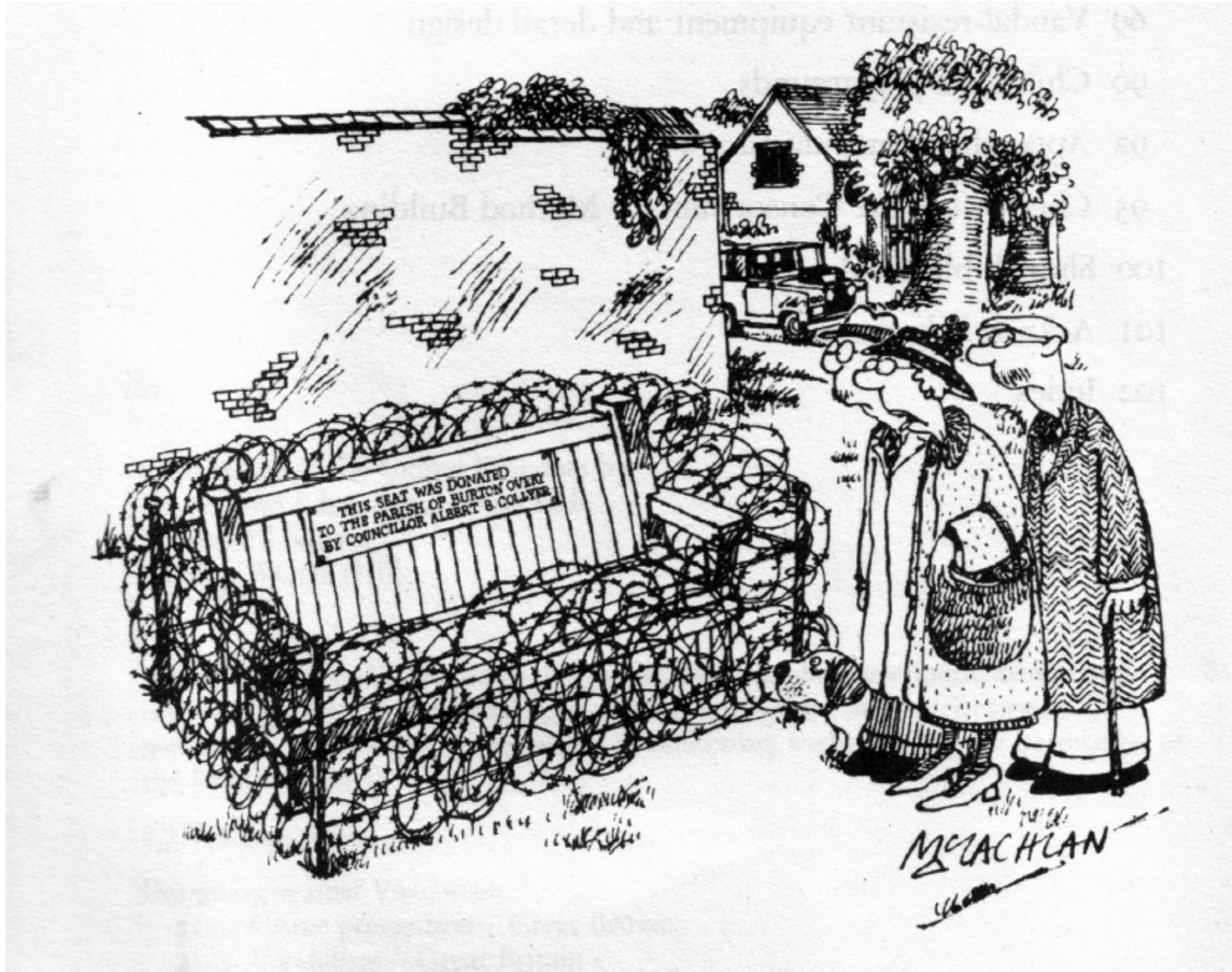


Toilet Finding Apps





"The council were worried it might get vandalised.."








Barriers to use

A screenshot of a web browser displaying the 'The Great British Public Toilet Map' website. The browser's address bar shows the URL 'greatbritishpublictoiletmap'. The website header includes the site name and a navigation menu with 'Sign In' and 'Reports'. Below the header is a blue button that says 'Give a pound to spend a penny!'. The main content area features a large heading 'Hello! What's your name?' followed by three paragraphs of text: 'Before you can contribute data we'll need to know who to thank.', 'We'll only store the name you give us against the data you contribute.', and 'Use one of the services below to let us know you're real.'. Below the text are four buttons for social media and code sharing: 'Facebook', 'Twitter', 'OpenStreetMap', and 'Github'. On the right side of the page, there is a map of London with several black location pins indicating public toilet locations. The map shows streets like 'Westway', 'Latimer Road', and 'Ladbroke Grove'.

data.gov.uk

Public Toilet Locations | data.gov.uk

 **DATA.GOV.UK** Beta
Opening up Government

Search for data...  

Home Data Apps Interact

[Home](#) / [Data Requests](#) / [Public Toilet Locations](#)

Public Toilet Locations

Submitted by gaillyk on Mon, 11/02/2013 - 14:05 | Updated on Thu, 02/10/2014 - 18:37

Environment

Location

Status:

ODUG developing business case

Data request description:

Latitude/Longitude (or Eastings/Northings) for the location of public toilets in Great Britain.

Reason:

There are financial charges for the data

Local government open data schemas | LG Inform Plus

schemas.opendata.esd.org.uk/PublicToilets

Local Government Association | LG Inform | LG Inform Plus | Data | Standards | Search | Help | About | Sign in | Register

Local Government Association

Local government open data schemas

powered by esd

- introduction
- inventories
- schemas**
 - browse schemas
 - inventory
 - planning applications
 - premises licences
 - public toilets**
 - api documentation
- datasets
- URIs
- incentive scheme

Schema details

Name	Public toilets
Documentation	Public toilets schema guidance
Schema Version	CsvLint schema
Schema Version	DataShare schema

Public toilets (579) service

Renditions for Peterborough - Public toilets

Title	Format	Type	Availability	Active
Public toilets	text/html	Document	Download	
Public toilets	text/csv	Data	Download	Yes
Public toilets	text/xml	Data	Download	Yes
Public toilets	application/json	Data	Service	Yes
Public toilets	text/xml	Data	Service	Yes

<http://schemas.opendata.esd.org.uk/PublicToilets>.

As someone with an ultra-sensitive bladder, I just wanted to say THANK YOU!!!!!!!!!!!!

I've suffered from Crohn's Disease for the last 5 and a half years,
so it's fantastic to see a map like this become a reality

This brilliant map shows you where you can find public toilets and whether
they are gendered

Great idea.

As someone who works outside all day a toilet stop is part of the normal routine

At long last an app/map that is REALLY useful, if only something like this had
been available when my late father was alive

This is a great idea, especially if, like me, you suffer from prostate cancer.

This will take all the stress from my holiday in Scotland next month. Thank you.

Where next?



Toilets 400m

Italian Fountains



The Great British Public Toilet Map

