

free guide

textiles & contemporary crafts

 select festival 2015  
craft at its best



sit  select



above from left: kerry jameson; grace lane; mellissa white; ann goddard cover: fine cell work

textiles & contemporary crafts →

Welcome .



**SITselect** t: **01453 751056 / 07767 763607**

*Please note the office is not open to visitors*

**SITselect** is a not for profit arts organisation dedicated to the promotion of the arts with an emphasis on contemporary textiles and the applied arts/crafts.

**Select** is an innovative annual festival that takes place every Spring.

Craft comes at us in a number of ways. Some of these are subtle; some are confrontational.

Let us say we travel to a craft exhibition set up by an honourable and long-lasting Guild such as the enterprising Gloucestershire Guild of Craftsmen. We will expect to see work of the hand manipulated with skill and destined for our homes or for personal adornment. Many of us will buy these works for the table or the home or to add to our wardrobes because they mark us out as individuals and because we deeply appreciate the connection that such a sale makes with the maker. We buy, to a degree, because we can talk about the piece. A memory of the conversation is wrapped up with it.

So craft may be deeply personal as well as useful. But there are times when it may ask more troubling questions:

[www.sitselect.org](http://www.sitselect.org)







select 2015

## craft at its best

**Saturday 2 – Monday 25 May**

about memory, identity, loss or grieving. We may not expect to see this craft in the surroundings of the craft guild exhibition. It is much more likely to find its home in the public gallery, or, more frequently nowadays, in venues as disparate as the historic house or even the heritage garden. Craft may appear, unsolicited on railings, bollards, buildings. Here its purpose is not decorative but provocative.

The wonderful achievement of SITselect is to build on all of these means of expression for craft: to give it a plurality of voices: from the discreet and understated to the polemical; from craft that hits us between the eyes: for its wit, its brilliance or its individualism. The exemplary and growing use of venues in and around Stroud – to the craft heartlands of Painswick, or Cirencester or Cheltenham, as well as in the calmer groves and sites of the National

Trust – and perhaps most of all in the plethora of makers's studios, adds to the diversity of exhibition. During these festival weeks craft may appear just about anywhere.

Craft and the idea of Festival is a very potent one. And one of the very great places where this idea is given shape, purpose and meaning is through SITselect. It is becoming more than subject specific, it seems to me. Textile is cohabiting with music, with prose and poetry. It is the source of questioning and conversation. *Select* is a remarkable event. There is nothing else like it England.

Professor Simon Olding *Simon Olding is a writer and curator. He is Director of the Crafts Study Centre, University for the Creative Arts. As well as being a Patron of SITselect, he is President of Walford Mill*





above: annie hutchinson below: karen suzuki

## ➔ Message from SITselect Director Lizzi Walton

The **Select Festival** welcomes you back to the glorious Stroud Five Valleys for another month of creative pleasure, with work from leading international artists and emerging new talent. Textiles remain our main focus resting beside work from the applied arts and contemporary design.

This year the Festival has two exhibitions presented by guest curators. **Power of Ten** in the Museum has been devised by Andy Christian who has brought innovative and truly inspirational artists to the Festival. Challenging, thought provoking and exciting.

Wallpaper is very definitely back in the spotlight and Charlotte Abrahams, writer on design and contemporary crafts, has selected some of the best designers working in the field of interior design today. Using skills such as

hand blocking, screen printing to the latest digital technology these papers will inspire you to get your paste and brush out. See **Pasting the Walls** at Newark Park National Trust property, and the **Beastly Magic** exhibition at Sofa & Stuff.

Workshops, talks, a seminar and exhibitions around the valleys we hope will educate and enrich. Enjoy the festival and the **Select Trail** and do come to the **Select Showcase** in October. Now where is that bucket of wallpaper paste?

Lizzi Walton *Director*





marthe armitage for hamilton weston



deborah bowness

a celebration of  
21st century wallpaper  
at **Newark Park**

curated by  
Charlotte Abrahams

**Wednesday 29 April – Sunday 31 May**  
**Wednesday – Sunday and Bank Holiday**  
**Mondays 11am – 5pm**

Newark Park, Ozleworth, Wotton-under-Edge,  
Gloucestershire, GL12 7PZ

*closed Mondays & Tuesdays, except Bank Holidays*



National  
Trust

SITselect

pasting the walls

select

[www.sitselect.org](http://www.sitselect.org)





lewis & wood; right: linda florence; far right: louise body

## exhibition

Marthe Armitage  
Louise Body  
Deborah Bowness  
CUSTHOM  
Linda Florence  
Fromental  
Hamilton & Weston  
Lewis & Wood





deborah bowness

www.sitselect.org

fromental



ARTS COUNCIL  
ENGLAND  
LOTTERY FUNDED



National  
Trust

sitselect

# pasting the walls: a celebration of 21st century wallpaper

**Wednesday 29 April – Sunday 31 May**  
**Wednesday – Sunday and Bank Holiday Mondays**  
**11am – 5pm**  
**Newark Park, Ozleworth, Wotton-under-Edge,**  
**Gloucestershire, GL12 7PZ**

*closed Mondays & Tuesdays, except Bank Holidays*

Wallpaper's popularity has waxed and waned ever since it was first used in Britain in the early 16th Century. However, whilst papered walls may often have been unfashionable, they have never quite disappeared and for the last decade, wallpaper has been firmly back in the fashion spotlight. Its staying power is partly down to our innate desire to decorate the walls that surround us, but its recent rehabilitation is due almost entirely to the

extraordinary creativity of contemporary wallpaper designers. Embracing every technique from the most traditional hand blocking to the latest in digital magic these designers are creating artworks on a roll. This exhibition is a celebration of their skill.

Designers exhibiting: **Marthe Armitage, Louise Body, Deborah Bowness, CUSTHOM, Linda Florence, Fromental, Hamilton & Weston** and **Lewis & Wood.**

*Entrance: £6 adults; £3.30 child; National Trust members free; for details go to*  
*[www.nationaltrust.org.uk/newarkpark](http://www.nationaltrust.org.uk/newarkpark)*





select

sit select

christian dodd  
ACCOUNTANTS FOR THE ARTS

Susanna Bauer  
Caroline Dear  
Susie Gillespie  
Ann Goddard  
Rozanne Hawksley  
Anne Jackson  
Kerry Jameson  
Katy Luxton  
Sumi Perera  
Shuna Rendel

susie gillespie

# stroud museum exhibitions 2015

**Saturday 2 - Monday 25 May**

**Tuesday - Friday 10am - 5pm**

**Weekends 11am - 5pm**

*closed Mondays except Bank Holidays*

**Gallery 1, Museum in the Park,  
Stratford Road, Stroud GL5 4AF**

*free admission*





shuna rendel

# power of ten

curated by Andy Christian





## Susanna Bauer

Susanna is fascinated by the miniature. Her skill is to combine fibre with found objects. She makes the invisible visible. Her crafting is so subtle that it does not call attention to itself; it remains solely the means to making the overall work.



## Power of Ten

**Saturday 2 – Monday 25 May**

**Tuesday – Friday 10am – 5pm.**

**Weekends 11am – 5pm**

*closed Mondays except Bank Holidays*

**Gallery 1, Museum in the Park,  
Stratford Road, Stroud GL5 4AF**

The word 'Power' has a number of meanings but it is most frequently used to denote authority, command and domination. But power can also mean a quality or property, a particular faculty of body or mind, a force of energy, a special ability or potency. It can infer intrinsic vigour and eloquence. It is for the expression of these latter, rather overlooked meanings that I appreciate in the work of these ten artists'.

Andy has sought out artists whose work may unsettle the audience. This collection of work may leave visitors to the exhibition viewing the world in a slightly different way. He has tried to avoid the decorative in favour of works that may provoke a sense of disquiet or invoke wonder.

*free admission*

*Andy Christian has a long history of curating, lecturing, writing and working in the arts. He was the first Director of the Devon Guild of Craftsmen and until 2008, was Managing Director of Dartington Cider Press Centre specialising in Art and Craft exhibitions. He writes regularly for Ceramic Review, Ceramics; Art and Perception and Resurgence magazine. He also acts as an adviser to artists and arts and heritage organisations.*







### Caroline Dear

Caroline utilizes the naturally occurring materials she finds around her home on the Isle of Skye. For Power of Ten she is showing three 'mantles'. They are both dramatic and ethereal. The mantles are made of birch, soft rush and dandelions and we the viewer are left wondering at how their apparent fragility allows them to survive.

### Susie Gillespie

Susie grows the flax she processes into linen yarn she then uses along with nettle fibre. The woven surfaces are sometimes worked with gesso creating a sense of tonal depth and textural richness that is akin to subtle under painting and quiet emotional responses to contemplation. Her work has a purist quality, a restraint. It resonates with the unsung, unknown makers of Japanese Boro.



### Ann Goddard

Ann Goddard makes objects that just might occur in our world. Insects, larvae and spiky, skeletal beings make their way over a surface, are fixed to a wall or trapped by an invasive lump of concrete. The diversity of her materials, from the softest tendril of fibre to the unforgiving harshness of cement, produces the sense of shock. There is nothing genteel about her contribution to textile art.



### Rozanne Hawksley

Rozanne Hawksley makes mixed media assemblages that evoke a strong sense of our mortality. Her works edge us more directly towards life's realities and are political. Her work often leaves us with questions; the right to defend, the senselessness and political cynicism that often direct unnecessary conflicts.



# power of ten



## Anne Jackson

Anne's works are graphic, political testaments which document history in their weave but they have an acute contemporary relevance for women across the world. Anne has gone back to early woodcut illustrations where each hand cast letter was inked and pressed deep into the handmade paper. These heavy indentations make them feel compelling and physical. These pages are then transformed by thread into rich textured tapestries that recall the chilling stories.

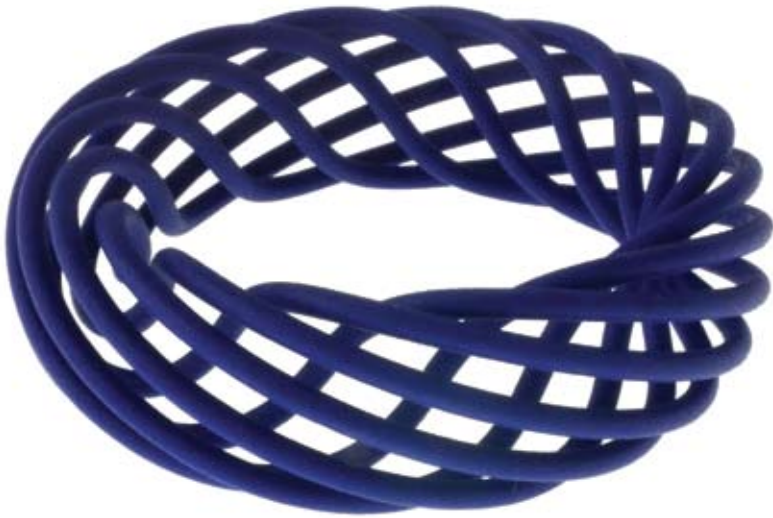


## Kerry Jameson

Kerry Jameson's creations are seemingly personal yet often draw upon found sources, such as images from books and postcards, as well as photographs. Works are inspired by the flow of things seen every day, as well as art from the past. With a passion for the European arts and its spiritual persuasions, she finds ways to translate this source material into her own experience in the form of drawings, paintings and sculptures.

# power of ten

exhibition



## Katy Luxton

Katy Luxton makes art to be worn but even when not adorning a body they hold a sense of sculptural wonder. She embraces new technology and uses a 3D printer to make her never ending circles. The magic is there if we allow ourselves to be curious about these constructive puzzles which seem to proffer the impossible.

## Sumi Perera

Sumi Perera's books reflect her work in the East and the West as a doctor, scientist and artist. Readers are encouraged to engage in the process of the development of the books and installations she initiates. Her 'books' are made using traditional and digital printing, hand and laser cutting, paper, fabric, thread, leather, glass, ceramic, metal and wood.





sitselect

christian dodd  
ACCOUNTANTS FOR THE ARTS



## Shuna Rendel

Shuna Rendel trained under the sculptor Anthony Caro at Central Saint Martins. She uses traditional materials like basket making and other hand constructed utilitarian objects from across the world but the resulting work is more traditional. Shuna values uncertainty and relishes using a material that has a mind of its own.



exhibition

2

## Showing in Gallery 2 Things We take with Us Jill Carter

### Gallery 1, Museum in the Park

Her quirky, dark and engaging work is often inspired by journeys, both real and imagined, physical and emotional landscapes, individual and collective hopes and dreams, memories and associations.

*Note: Gallery 2 may be closed if there is something happening in the room.*

www.sitselect.org

exhibitions select

Jill Carter

## Things We take with Us



13

select



unbounded; juxtapositions; no box to tick; linen works





left: ann goddard above: kerry jameson

# power of ten

## invoking wonder

one day seminar

Invoking Wonder seminar  
A Sense of Disquiet gallery walk  
**Saturday 2 May 10am – 4pm**  
Gallery 2, Museum in the Park



# event

## Invoking Wonder

seminar

**Saturday 2 May 10am – 4pm**

**Gallery 2, Museum in the Park, Stratford Road,  
Stroud GL5 4AF**

A day spent in the company of artists who make extraordinary work. They all see the world in different ways and their work reflects those unique visions. It follows on from the exhibition in Gallery 1, *Power of Ten*, where work which might provoke enquiry and invoke wonder can, be seen. Enjoy a day of discussion with beautifully illustrated and inspiring presentations, demonstrations and examples of the artists' work.

## A Sense of Disquiet

gallery walk

Andy Christian will talk about the exhibition and the research that went into the planning and curating. Andy and any of the artists present will also be happy to respond to questions from the audience.

Kerry Jameson  
Ann Goddard  
Sumi Perera  
Susie Gillespie  
chair:  
Andy  
Christian



• **Unbounded**  
• **Kerry Jameson**

• Ceramist/mixed media work  
• incorporating textiles and mixed  
• media with clay.



• **Juxtapositions**  
• **Ann Goddard**

• The development of her *Eclectic*  
• *Constructions*.



• **No Box to Tick**  
• **Sumi Perera**

• A multi disciplinary artist who uses  
• laser cutting/engraving, print  
• making processes and stitch.



• **Linen Works**  
• **Susie Gillespie**

• Weaver/textiles, who will discuss  
• the process of preparing linen from  
• plant to thread.

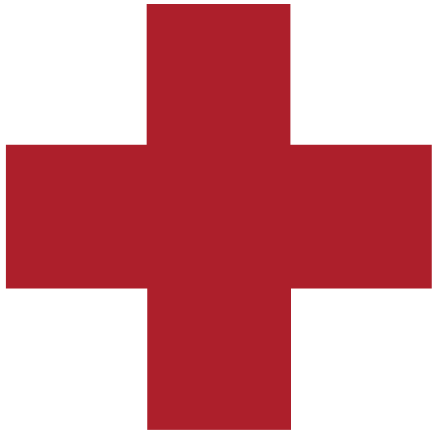
# invoking wonder

one day seminar

*Tickets: £45/£40 concessions (full time students and Friends of SITselect) includes tea and coffee, please note that you will have to bring your own lunch as there is no cafe at the Museum*







# red cross series

Red Cross Series  
Ruth Harries

**Saturday 2 - Monday 25 May**

**Tuesday - Friday 10am - 5pm.**

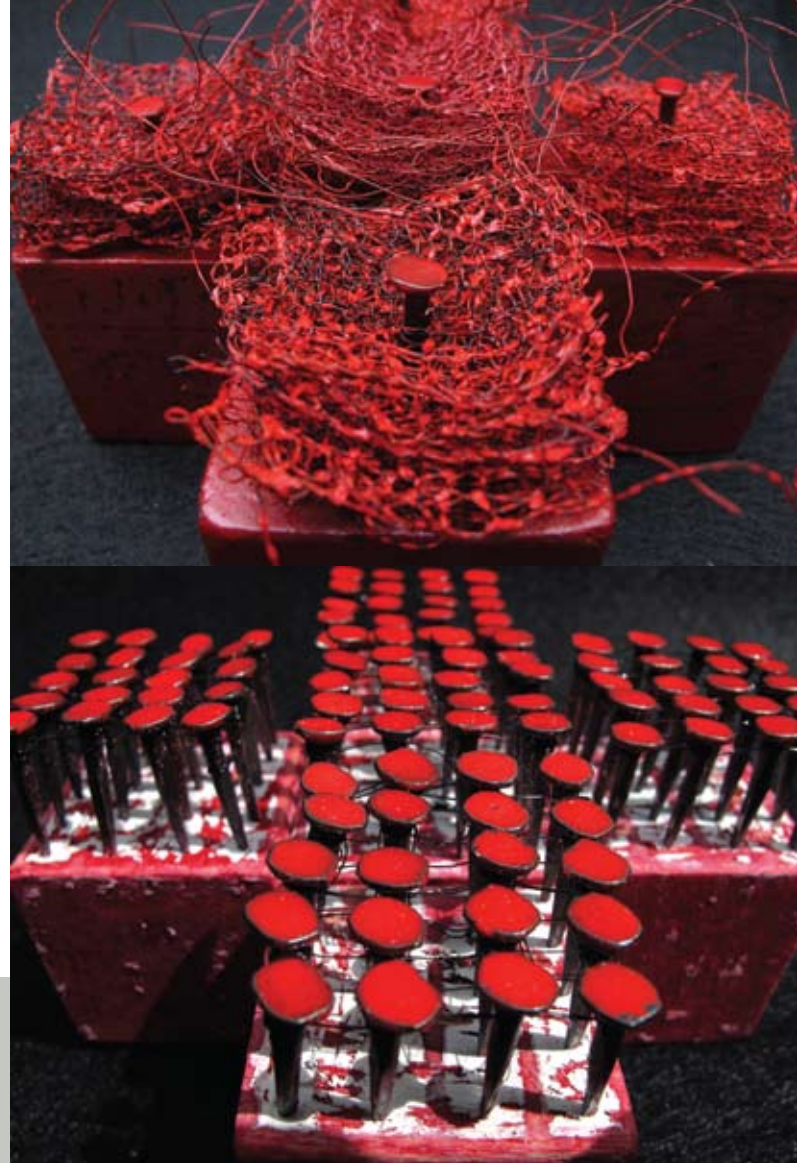
**Weekends 11am - 5pm**

*closed Mondays except Bank Holidays*

**Foyer, Museum in the Park, Stratford Road,  
Stroud GL5 4AF**

The *Red Cross Series* reflects on the invaluable work of the Red Cross Organisation and the role of women during WW1. Using mixed media, the Crosses re-present the diverse range of manual jobs including upholstery, trimming and other skilled operatives undertaken by women. The Red Cross was instrumental in organising the constant supply of soldiers' clothing. Many essential knitted and sewn items were produced at home from socks to patient's operation gowns. It is this work, the skills employed and the act of repeated process that Ruth Harries has considered in the *Red Cross Series*.

*free admission*



exhibition

Ruth Harries



17

select



# beastly magic

Vicki Atkinson  
Boo and the Angel  
Sarah Burghard  
Francesca Chalk  
Mary Crabb  
Andy Hau  
Annie Hutchinson  
Grace Lane  
Kerry Phippen  
Karen Suzuki  
Badgers of Bohemia  
Cole & Son  
Daniel Heath  
Tracy Kendall

annie hutchinson

[www.sitselect.org](http://www.sitselect.org)

## Beastly Magic

**Saturday 2 - Monday 25 May**

**Sofa & Stuff, Woodchester Mill,  
North Woodchester, Stroud GL5 5NN**

**Monday - Saturday 10am - 5.30pm**

**Sunday & Bank Holidays 11am - 4pm**

*free admission*

*parking available*





## Vicki Atkinson

Quirky ceramic sculpture celebrating the lighter side of life. Victoria's figures ooze attitude and make you laugh out loud.



## Boo and the Angel

Curiouser and curiouser, whimsical mixed media pieces reminiscent of the Victorian Collectors Cabinet, using papier-mâché, silver, stitch, porcelain and found objects.

## Sarah Burghard

Sarah Burghard's designs are unique. Sarah is producing a limited edition range for both SITselect and Sofa & Stuff demonstrating how her collaborations create textiles derived from client's identity, setting and story. Sarah creates highly personal and visually rich fabrics which are used for interiors.

# beastly magic

exhibition



## Francesca Chalk

Francesca screen prints her designs on to natural fabrics, mostly linen. They are simple, graphic images influenced by nature.



## Mary Crabb

A contemporary basketmaker and textile artist, she makes small decorative woven pieces using a range of adapted basketry and textile techniques. Woven by hand, the weaving gives a smooth, slightly undulating surface.



## Andy Hau

*Tales From The War & Other Short Stories* is a limited edition cushion collection that documents the whimsical adventures of Harlequin 'Quinn' the Fox. Designed by Andy Hau and inspired by his grandfather's tales of the war, each cushion is reversible, depicting a short story on one side and a signature Foxtooth pattern on the other.



### Annie Hutchinson

Needlefelt, experimental use of machine and hand stitching, combined with a passion for textiles, Annie produces sculptures and wall pieces with a tale to tell.



### Grace Lane: Threadbare Productions

Unique charming and enchanting creatures. Each character is hand made using vintage silks, tweeds, velvets, yarns and vintage finds.



### Kerry Phippen

Kerry Phippen is an award winning artist inspired by ancient connections between humans and animals. Kerry uses traditional art papers, Japanese chiyogami and decorative wallpapers with pencil, acrylic paint and ink.



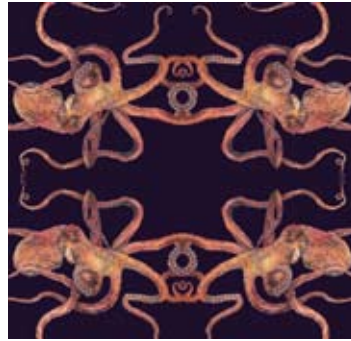


**Karen Suzuki**

*Nameless Wonders* is a world of hand-stitched collectable creatures. Karen uses visible, energetic, spontaneous stitching to give them the appearance of being that bit more alive and real.

exhibition

plus 4 contemporary wall paper designers:



badgers of bohemia



cole & son



daniel heath



tracy kendall

**Badgers of Bohemia** *Optical Octopus*

**Cole & Son** *Folie Versailles Grand*

**Daniel Heath** *Taxidermy Birds*

**Tracy Kendall** *Open Feather*

beastly magic

SITselect

meme.

Julia Georgallis  
Katherine May  
Marcin Rusak  
Hazel Stark  
Gemma Kay Waggett  
Emma De Clercq

www.sitselect.org

emma de clercq

concerning plants



**Concerning Plants****Saturday 2 May – Monday 25 May****Meme Cafe Bar, 16 George Street,  
Stroud GL5 3DT***exhibition times:***Monday – Saturday 9am – 5pm****Sunday 10am – 5pm**

hazel stark

It is no secret that botany in the UK is booming. New style floristry has emerged; flower arranging workshops are deemed as a 'must do' activity and allotment waiting lists as long as the fences that surround them are soaring.

A floral environment has long been said to provide both emotional and behavioural health benefits in the work place and beyond. In pursuit of a more wholesome lifestyle our interest in plants, flowers and gardening continues to rise as we are attracted to growing, caring for and cultivating our own crops to match with individual domestic needs and requirements.

*Concerning Plants* will feature the work of five designers who are all currently exploring themes of the

botanical through their practice. Just as the botanical world encompasses many varied stages and elements, the show will also include work in several forms from textiles, product design to ceramics and live making.

The exhibition will present the work of **Julia Georgallis, Katherine May, Marcin Rusak, Hazel Stark** and **Gemma Kay Waggett**.

*free admission*

**Meme Café Bar**

Please note that Meme is open to the public:

Monday – Thursday 9am – 11.30pm; Friday – Saturday 9am – 1.30am; Sunday 10am – 8pm.



# concerning plants



## Julia Georgallis

Julia Georgallis, a designer with a weakness for baked goods who believes in collaboration, community and entrepreneurship in design will be baking bread for Meme.



## Katherine May

Katherine May runs a textile studio designing, executing and navigating textile objects, spaces and research. The studio is driven to work physically with a vast range of materials used in textile production, and much time is given to the gathering of materials, from growing plants to process into dye, to sorting through a textile recycling centre to find cloth.



## Marcin Rusak

Designer Marcin Rusak's work often incorporates research, object and installation as well as video and graphic design to explore ideas of value, ephemerality and aesthetics.



# concerning plants

exhibition

**BRUTES**



## Hazel Stark

Textile designer Hazel Stark specialises in dyeing and screen printing linen with natural dyes. Her recent work is dyed with madder, weld, woad and other organic plant dyes that have a fantastic luminosity, unique to natural pigmentation.



## Gemma Kay Waggett

Printed and embroidered interdisciplinary Stroud based textile designer and pop up shop *Nothing but Navy* shop-keeper Gemma Kay Waggett, will be presenting her first ever floral collection.



## Emma De Clercq: Brutes

**Saturday 2 – Sunday 24 May**  
**Fourteen, 14 Kendrick Street,**  
**Stroud GL5 1AA**

In addition to the *Meme* show, Emma De Clercq from emerging brand *Brutes*, who sets about sourcing unusual collectable planters for cacti and succulents, will curate a site-specific installation for the window of **Fourteen** in Stroud town centre for all to enjoy.

www.sitelect.org

event



www.sitselect.org

## Bread Companion Julia Georgallis

**Saturday 9 & Saturday 16 May 10am – 3pm**

Julia Georgallis and her **Bread Companion** will be on the forecourt of Stroud Subscription Rooms. Join Julia and make your own bread to take home and enjoy.



exhibition



## Springboard II Studio Seven

**Tuesday 14 April – Sunday 31 May**

**Open Tuesday – Sunday 10am – 5pm**

**The Guild at 51, 51 Clarence Street,  
Cheltenham GL50 3JT**

Studio Seven textile artists present *Springboard II*, a collection of new work developed from their 3D sketchbook of ideas inspired by the old Chalford Chair Factory which was shown to great acclaim at *Select 2014*.

[www.guildcrafts.org.uk](http://www.guildcrafts.org.uk)



exhibitions select



27





**Wrapped**  
**Carole Waller &**  
**Gary Woods**

**Saturday 2 - Monday 25 May**

**11am - 5pm**

**Venue to be confirmed**

*free admission*

[www.sitselect.org](http://www.sitselect.org)

An installation by Carole Waller and Gary Wood in which two artists investigate the texture, fabric, containment and freedom of our lives. The exhibition will show new hangings by painter and designer, Carole Waller alongside her extraordinary clothing and ceramics by Gary Woods.

Carole makes unique clothes using painted marks on cloth and constructing beautiful wearable garments in silk, organic cotton and fine wool which enclose the

wearer in a swathe of colour.

Gary makes ceramic forms in which texture, colour, line and form are integrated in the fusing of clay and glaze to reveal an extraordinary quality of presence and depth.

A venue is still to be confirmed so please keep an eye on [www.sitselect.org](http://www.sitselect.org) for confirmation or call 01225 858888.

[www.carolewaller.co.uk](http://www.carolewaller.co.uk)





## It's a Floral Affair Jan Ollis

**Saturday 2 - Monday 25 May**

**Oxfam, King Street, Stroud GL5 3DA**

*'The Rural Flower Show intrigues me. Often unassuming but in reality the gift of growing the perfect flower and forming them into stunning displays seem unachievable to those of us who do not possess green fingers. The rivalry contrasts the camaraderie involved, the knowledge that soon perfection will disappear and die, so much effort for a brief moment of glory, or even disappointment. Knitting, crochet and sewing have been used to create each flower, grown from many endeavours. Each awarded a prize.'*

*free admission*



exhibition



## Dust to Dust Penny Burnfield

**Saturday 9 – Sunday 10 May 10am – 4pm**  
**Saturday 16 – Sunday 17 May 10am – 4pm**  
*or by appointment*

**Ground Floor, Victoria Works, London Road,  
 Chalford GL6 8HN**

This piece was made for the *10 Days Arts Festival*, held at Winchester in October 2013. It was shown in the Cathedral where Penny was fascinated by the multiplicity of memorials and gravestones which are everywhere, on the walls, under our feet. Every inscription tells a story, some more than others and each reflects the journey of a human life through the centuries. The figures are based on Penny's family, a *Memento Mori* for the 2000s. Many thanks go to Alwyn Marriage for her poem which was specially written for this piece.

*free admission*



# exhibition

## Locating Quinary Textile Group

**Tuesday 5 – Saturday 23 May**

**Tuesday-Saturday 10.30am – 4.30pm**

**Sundays 12noon – 4pm**

*closed Mondays*

**Lansdown Hall & Gallery, Lansdown, Stroud GL5 1BB**

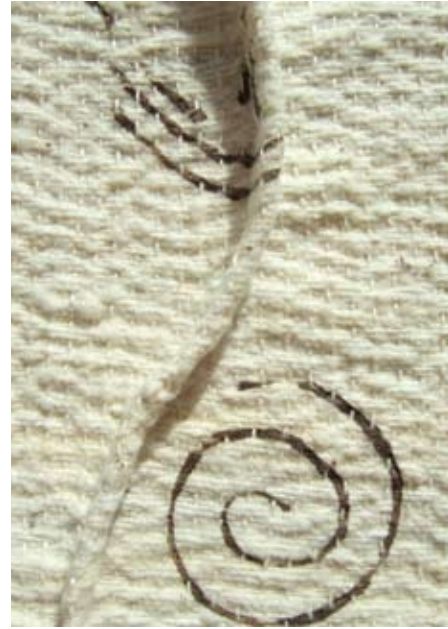
*Locating* is an exhibition of textile inspired art by the Quinary Textile Group. Brought together from diverse backgrounds to research and make textiles, this is the group's third exhibition following earlier work exploring traces. The five members of the group, **Val Cross**, **Marilyn Hall**, **Caroline Hibbs**, **Denise Jones** and **Jean Kirk** are joined by **Kay Swancutt**, **Monica Bruckner** (Germany) and **Ingrid Lincoln** (Canada) at the Lansdown Hall and Gallery. Thought provoking, this exhibition seeks to pick apart the term 'To Locate' usually associated with geographic of place. The work aims to extend this definition to include the temporal and the spaces of the psychoanalytical. All the works incorporate a sense of movement, fluidity and change. They engage with our need to map, to search, pause and reflect, and are appropriately imagined in printed, constructed and stitched textile.

*free admission*

## Meet the Artists in the Gallery

**Saturday 9 May 11am**

[www.quinary12.wordpress.com](http://www.quinary12.wordpress.com)





### A Shared Story

Kate Montgomery & Anna Brimley

**Saturday 9 – Sunday 10 May 10am – 4pm**

**Saturday 16 – Sunday 17 May 10am – 4pm**

**Victoria Works, London Road, Chalford GL6 8HN**

Anna Brimley is a designer maker, working primarily in fine metals. She builds kinetic sculptures alongside jewellery ranges with a multi-sensory focus. Her interest in the senses stems from her synaesthesia, a neurological condition in which two or more senses combine such as sounds conjuring flavours and temperatures evoking colours. She likes the idea of people forming a deeper connection to objects than simply an aesthetic one. A memory jerked through scent or a comfort found through touch.

Having recently graduated from Falmouth University Contemporary Crafts BA, Kate Montgomery creates special furniture with a story to tell. She is a writer with a passion, creating heirlooms with hidden fiction, stories and memories.

*The studio is part of the Select Trail  
free admission*

### Students Exhibition

Stroud College Textile Foundation

**Saturday 9 – Sunday 10 May 10am – 4pm**

**Saturday 16 – Sunday 17 May 10am – 4pm**

*or by appointment*

**Second Floor, Victoria Works, London Road,  
Chalford GL6 8HN**

Students on the *Foundation Diploma in Art and Design* and those in their second year of study on the *Extended Diploma in Fashion and Textiles* at South Gloucestershire and Stroud College have been included in this year's *Select Trail*. This fantastic opportunity to exhibit means that students learn to view their work in the context of the wider Artisan calendar.

The exhibition is their personal response to their recent study trip to Rome and the development of their ideas from initial concepts through to final swatches of







fabric or garments.

The *Foundation Diploma in Art and Design* is one of the best qualifications for those pursuing a career in the creative industries. It is a diagnostic course intended to enable students to choose which art and design discipline they wish to specialise in.

Level 3 *Extended Diploma in Fashion and Textiles* is designed to expand student's creative skill base and introduces a wide range of these skills and disciplines including printmaking, pattern cutting, experimental shape-making, sewing skills, fabric manipulation, surface design and textiles. Fashion is an exciting, diverse, challenging and international industry. The course philosophy is to nurture innovation and originality, alongside the development of an industry relevant tool-kit of essential skills.

*free admission*

www.sitselect.org





## The Houndstooth Project Jo Pierce & Rebecca Hoyes

workshop

**Saturday 9 May 10am – 5pm, Sunday 10 May  
11am – 4pm**

**Victoria Works, London Road, Chalford GL6 8HN**

*The Houndstooth Project* is a collaborative, egalitarian, ludic textile research initiative set up by Jo Pierce and Philippa Brock (*Studio Houndstooth*). Both Jo and Philippa are experienced textile designers with portfolio practices and are Senior Lecturers at Central Saint Martin's, running the Print and Woven Textile Departments part time on the BA (Hons) Textile Design.

*The Houndstooth Project* uses the ubiquitous houndstooth textile motif as a design thinking approach and methodology development. Artists from any discipline are offered the opportunity to explore and experiment in the company of leading textile tutors and designers.

This is a fantastic opportunity to explore with two experienced leading designers.

*Jo Pierce is Senior Lecturer, Print Pathway Leader  
BA Textile Design*

*Rebecca Hoyes teaches part time on Print Pathway  
Course at Central St Martin's as well as having her  
own successful Textile Print Studio (Prior to was  
Senior Designer for Textiles at Habitat)*

*Fee: £155; concessions for full time students and  
SITselect Friends £85; includes some materials  
and a delicious light lunch, tea and coffee; a suggested  
materials list will be provided upon booking*



### Aims

The workshop aims to create a thinking and dialogue space with others in which to consider your current designing or making approaches and for participants to leave with a refreshed direction or new applications for your ideals. There will be a playful approach to making throughout the two days. Investigate your own notions of houndstooth; bring your approach, either from the field of textiles or other disciplines as a way to consider the value and qualities of the production of a motif.



jo pierce



rebecca hoyes



# Jo Pierce + Rebecca Hoyes the houndstooth project

www.sitselect.org

## Day One

Having had an initial introduction into drawing out single and multiple repeats of the houndstooth motif, you will be encouraged to explore design processes using a range of supplied making materials and media, in both 2D and 3D.

This day will be a chance to engage in dialogue with other makers and how each participant approaches the houndstooth motif/design/thinking.

*Materials will be provided, please bring a camera*

## Day Two

Taking what you learnt from day one and applying your own developed houndstooth method to your practice, this day will be an opportunity for you to consider and/or develop a new approach in relation to your practice. You will be encouraged to bring your own sketchbooks and materials related to your practice to the second day of the workshop.

*Materials: Bring a selection of your own more familiar materials used in your development process and making practice, or those inspired by day one. This could include drawings or making materials, 2D and 3D materials, analogue or digital outcomes.*

*Camera and sketchbook advised*

## Outcomes

With participant's permission, all *Houndstooth* responses and results from day one of this workshop will be uploaded and included in an online gallery on *The Houndstooth Project* website.



**World Textiles Weekend**

**Saturday 9 May 10am – 5pm**

**Sunday 10 May 10am – 4pm**

**Bisley Village Hall, Manor Street, Nr Stroud GL6 7BJ**

Information from Bailey Curtis on 01453 823375

e: [bailey@baileycurtis.com](mailto:bailey@baileycurtis.com)

Delicious food available by *Woodruffs of Stroud*

*Admission: £1; children under 15 free*



# world textiles weekend

**Exhibitors**

**Linda Clift & Lizzie Drake**

Textiles from England and France

e: [gloriana41@yahoo.com](mailto:gloriana41@yahoo.com)

[www.lindaclift.blogspot.com](http://www.lindaclift.blogspot.com)

[www.vintagelizzie.blogspot.com](http://www.vintagelizzie.blogspot.com)

**Martin Conlan of Slow Loris**

Tribal Textiles from

Southwest China

e: [slowloris@dsl.pipex.com](mailto:slowloris@dsl.pipex.com)

[www.worldtextileday.co.uk](http://www.worldtextileday.co.uk)

**Jennifer Evans**

Decorative textiles and jewellery  
sourced in India

[www.pinterest.com/jenpatola/  
ethnic-textiles](http://www.pinterest.com/jenpatola/ethnic-textiles)

**Lucy Farmer of Zeitgetist**

Indian textiles, antique, vintage  
and contemporary

[www.linkedin.com/pub/lucy-  
farmer/55/332/668](http://www.linkedin.com/pub/lucy-farmer/55/332/668)

**John Gillow**

African, Indian and  
South East Asian Textiles

e: [jgillow@hotmail.com](mailto:jgillow@hotmail.com)

**Diane Logan of Customized**

Up-cycled jackets and coats  
made from Welsh blankets and  
other textiles

[www.dianelogancustomized.com](http://www.dianelogancustomized.com)

**Polly Lyster**

Hand Dyed fabrics & antique cloths  
[www.dyeworks.co.uk](http://www.dyeworks.co.uk)

**Michele Moody**

Handloom woollen shawls and throws,  
from weaving co-operatives in India

**Lou Taylor-Brown**

Handcrafted jewellery and hair  
accessories using vintage lace,  
textiles and found treasures  
e: [E.P.Taylor@brighton.ac.uk](mailto:E.P.Taylor@brighton.ac.uk)

➔ **Directions to Bisley**

*From North M4: exit J15 to  
Cirencester on A419, then follow  
road to Stroud for 8 miles and  
turn right signposted Bisley*

*From South M4: exit J13 to Stroud  
on A419 towards Cirencester, then  
turn left for Bisley after Waitrose  
roundabout, turn 1st right into  
Field Road, up past the Hospital  
then turn right into Bisley Road.  
Directions to the village hall  
will be on the road when you get  
to Bisley.*



# workshop

## Experimental Twining: Woven Vessels Incorporating Line and Pattern

Mary Crabb

2 day workshop

**Saturday 9 May 11am – 4.30pm**

**Sunday 10 May 11am – 4pm**

**Museum in the Park, Stratford Park, Stroud GL5 4AF**

Mary Crabb is a contemporary basket maker and textile artist. She makes small decorative woven pieces using a range of adapted basketry and textile techniques. One of her favoured techniques is twining, a technique found in both basketry and textiles. Woven by hand, the weaving gives a smooth, slightly undulating surface.

This is an explorative workshop to learn and experiment with the technique of twining through the use of a range of fine flexible materials and threads. You will learn the basic technique of twining and then develop your skills to work with two different threads to create lines, textures and patterns. During the two days you will create a collection of experimental samples. The experiments will hopefully produce some interesting discussions about the use of different materials and threads.

Mary will bring along samples of her own experimental work to show and talk about how they have informed a finished piece of work.

*Fee: £80; concessions £65 (full time students and Friends of SITselect); materials included and tea & coffee provided but please bring your own lunch*

# workshop

## A Feast of Willow Helen Lomberg

**Saturday 16 – Sunday 17 May 10am – 5pm**

2 day workshop

**Victoria Works, London Road, Chalford GL6 8HN**

During this two day willow basket making workshop, you will be able to make a large storage basket with a lid (such as an *Ali Baba*) a log basket or a basket with a handle for shopping or harvesting. Those with a little more experience might like to try an *Oval* basket. During the course of the weekend, which is aimed at beginners and those with some experience of basket making, students will complete a basket using willow grown in Somerset and Gloucestershire and will learn about growing, harvesting, sourcing and preparing this most wonderfully versatile material.

Helen Lomberg is a basket maker of some twenty years experience. About 4½ years ago she set up the Gloucestershire Arts and Crafts Centre selling craft to the public and holds regular workshops to pass on skills.  
*Fee: £55; includes all materials and a delicious lunch*



# Selvedge

“Always a delight.  
Great to see the Selvedge Fair in Stroud”

## Selvedge Spring Fair

**Saturday 16 May 9am – 4pm**

**The Subscription Rooms, George Street,  
Stroud GL5 1AE**

Known for its textile heritage, the beautiful town of Stroud in Gloucestershire will be the final stop on the Selvedge tour. Alongside the team behind the *Select Spring Festival*, *Selvedge* will be holding its third *Spring Fair* of the season. Expect a delightfully curated range of antique textiles, ceramics, handcrafted jewellery and woven baskets. Join us for the fair and meet the makers who craft some truly individual products and if you're a textile enthusiast make a weekend of it and immerse yourself in the Festival. Visit [www.selvedge.org](http://www.selvedge.org) for more details.

*Entrance fee: £3.50; Café on site*

www.sitselect.org





## Fine Cell Work Alison Saunders

iIllustrated talk

**Sunday 17 May 2pm**

**Gallery 2, Museum in the Park, Stratford Road,  
Stroud GL5 4AF**

Alison Saunders will talk about her time spent teaching high-quality needlework in prisons with the charity *Fine Cell Work*. *Fine Cell Work* is a social enterprise that trains prisoners in paid, skilled, creative needlework – undertaken in the long hours spent in their cells – to foster hope, discipline and self esteem. This helps them to connect to society and to leave prison with the confidence and financial means to stop offending. Prison stitchers spend an average of 20 hours per week doing embroidery in their cells: some stitch for as long as 40 hours. This painstaking work develops self-discipline and skills, helping them to serve their time with purpose and dignity, while preparing them for a productive life after prison

*Fine Cell Work* is a charitable initiative which is funded 30% by sales and 70% by donations and trusts. Prisoners earn 37% of the sale; the rest is reinvested in training workshops, materials and *Fine Cell Work's* development. The prisoners' products have been sold internationally and to top interior designers. Works have been commissioned by leading heritage organisations such as the Victoria & Albert Museum, the National Trust and English Heritage.  
*Tickets: £8; Friends of SITselect £5*

## All Stitched Up The Sewing Shed

**Saturday 23 May**

**10am – 3.30pm**

Explore to use the machine in ways you never have before.

Experimental stitch and techniques of freehand embroidery to create textures and form to inspire future projects and artwork.

The Sewing Shed is a sewing workshop in which to sew, make, create and experiment with fabrics. With a long held passion to create and manipulate fabrics, working with stitch and 3 dimensional forms, there are workshops to suit all needs, from technical dressmaking to creative textile manipulation.

To book spaces go on line at [www.sewcreativezone.co.uk](http://www.sewcreativezone.co.uk)

*Fee: £35*

talk





## Forage, create natural dyes & print: UK-grown organic textiles Botanical Inks

**Saturday 23 and Sunday 24 May**

**Victoria Works, London Road, Chalford GL6 8HN**

Learn to harness environmentally sustainable colour from your landscape in our foraging, dye-making and surface application workshops. Take pleasure in gathering wild plants, harvesting organic produce and re-using food waste for creative textile design. Learn the wholesome art of making natural dyes and a selection of traditional, 'low-impact' printmaking crafts, including block print, screen print and Japanese Shibori tie-dye. Using renewable energy to power our stoves and a chemical-free process which is both safe for participants' use and for the Earth. And locally sourced fibres, which have been organically grown, biologically washed and manufactured in England. Botanical Inks provides a pioneering model for circular textile production systems in the UK, based on human-scale and biologically nutritious design.

Transition your creative practice with us.



**babs behan**



**flora arbutnott**

## Foraged Natural Dyes & Shibori Babs Behan

*one day workshop*

**Saturday 23 May 10am – 4.30pm**

Join us for a natural dye foraging walk, to locate pigment-producing plants for the dye-pot. Discover how to extract pigments and make your own local, seasonal dyes, along with the skills to create intricate Japanese Shibori tie-dyed silks. You will learn how to harvest wild plants responsibly and build the confidence to continue your own natural dye practice. All materials are provided, including a length of British organic silk, to create a scarf.

*Fee: £65; inclusive all materials and a light lunch*





Natural Dyes & Printmaking  
Babs Behan & Flora Arbuthnott

**Sunday 24 May 10.30am – 4.30pm**

*one day workshop*

Discover how to extract pigments and make your own local, seasonal dyes, along with the skills to create beautifully printed silks. This workshop will introduce you to block print, screen print and potato print techniques. You will gain the confidence to continue your own natural dye and printing practice. All materials are provided, including a length of British organic silk, to create a 1m sq scarf.

*Fee: £80; inclusive all materials and a light lunch*

botanical inks



## workshop

## Making the most of Selling Wholesale and Selling Online for Makers

Patricia van den Akker: Director Design Trust

**Saturday 23 May 10am – 1pm**

**Gallery 2, Museum in the Park, Stratford Park, Stroud GL5 4AF**



The mornings' workshop will be with Patricia van den Akker. Patricia is Director of The Design Trust, the online business school for designers and makers, and the session will be packed full of practical advice, useful tips, and questions to ask yourself when deciding your next business steps. You will leave this workshop with a clear action plan for your creative business.

Patricia will cover the following:

- Introduction to selling online; presenting all different options. From either your own website or online shop, portfolio and membership sites, to online boutiques and market places as well as crowdfunding and selling your designs, all discussed with the pro and cons of each
- How to decide which online opportunities are best for you, your products and business
- Are you ready to sell wholesale?
- Price terminology and why retailers charge so much commission
- How to make 'Sale or Return' work for you
- How to find the best retailers for you
- How to approach retailers with more confidence and success
- How creating and launching a collection can help you with selling online and wholesale
- You will create your own mini-action plans on what steps to take next concerning selling online, selling wholesale and launching your collection.

This workshop is aimed at designer makers and creatives who want to sell more and especially more confidently both online and/or to retailers.

Patricia van den Akker is the Director of The Design Trust and has worked with thousands of small creative businesses, sole traders and freelancers as a creative business adviser, trainer, mentor and coach in the last 15 years. She is known for her practical, inspiring, can-do workshops to help you turn your ideas into reality.

*Fee: £5.50; (concessions £4 full time students and Friends of SITselect)*



### One to One

After lunch there will be just four *One to One* 30 minute mentoring sessions with Patricia. This will be a special opportunity to gain advice and discuss your creative practice with the Director of the Design Trust so they will be booked on first come, first served basis.

*One to One mentoring sessions £25. To book, call the SITselect office*



# workshop



## Mark Making & Textural Play Jilly Morris

2 day workshop

**Saturday 23 – Sunday 24 May 11am – 5pm**

**Hawkwood College**

*Mark Making & Textural Play* is a workshop that playfully investigates abstract mark making on paper and how it may be used to provide inspiration and new ideas for contemporary drawing, textile and mixed media art. Over the two days participants will be encouraged to create a series of sensory, freeform, playful and impulsive textural samples using unusual mark making techniques. The emphasis will be on self directed discovery through demonstration, exploration and group exercises. Discover that interesting textures can be created using the simplest of tools. You will use some techniques that you are already familiar with, some that you learn on the day and others that you will invent. Jilly will present illustrated presentations and provide mark making demonstrations. Beginners to practicing artists are welcome.

*Fee: £125 includes materials and a light lunch;  
a materials list will be provided upon booking*



## Coil Basket Weaving Ruth Woods

one day workshops

**Saturday 23 May 10am – 5pm**

**Sunday 24 May 10am – 5pm**

**Hawkwood College**

Ruth Woods lived with the Indigenous Yolngu women in North Arnhem Land, Australia. During her time there the women taught her how to create beautiful coiled baskets. Ruth would source and gather plant material in the outback and on her return would cook up pots to dye and create fibre from the Pandanas tree to create baskets. You will be taught the coiling method and construct a small basket. Ruth shares stories of her time in Arnhem Land and shows examples of Yolngu Women's work and her own. This workshop will be an engaging day full of information, including a visual presentation around the life of an Indigenous woman and how they gather and make their baskets.

*Fee: £65 a day; includes materials and a light lunch*

# workshop

# HAWKWOOD

Hawkwood College, Painswick Old Road, Stroud GL6 7QW



# 43



Elizabethan Decorative Wall Painting:  
how we patterned our  
rooms before wallpaper  
**Melissa White**

illustrated talk

**Sunday 24 May 2pm**

**Gallery 2, Museum in the Park, Stratford Park,  
Stroud GL5 4AF**

Melissa White dispels the commonly held perception that Tudor houses were all white washed walls and dark beams by revealing fascinating examples of wall paintings and painted cloths from the 16th and 17th centuries.

As a decorative artist and designer, Melissa has been studying and reproducing these designs for 18 years with a hands-on approach to understanding how they were produced. In the informal talk she will guide you through this decorative period by showing examples of original designs and how she has incorporated them into her creative practice with projects such as her *Arden* fabric and wallpaper collection for *Zoffany*. Melissa will bring samples of the work to enjoy.

*Tickets: £10*

Melissa White







elizabethan decorative wall painting







### Atelier Textile Craft Club and Workshops

Atelier is a workshop venue. It is located in a beautiful studio in the 'Old Stroud'. Atelier also functions as a social club for anybody that has an interest in creating around textiles, wool and other related crafts. Facilities: Sewing machines, overlocker, industrial sewing machine, felting table and tools, knitting lounge, cutting tables, textile craft library, free WIFI and much more.  
[www.atelierstroud.co.uk](http://www.atelierstroud.co.uk)

## talk

### Denim – Workwear, The Modern Jeans William Kroll: Founder of 'Tender'

illustrated talk

**Friday 8 May 2pm**

**Atelier, 19a Lower Street, Stroud GL5 2HT**

Meet the clothing and products designer William Kroll who will take you through the history of denim and jeans. You will get an understanding of all the details that make denim and jeans look the way they look today. There will be inspirational samples to look at and touch. William Kroll is a fashion designer and lecturer in jeans design at University of the Arts, Central St Martin's and the University of Westminster. He has worked in the denim industry for ten years and moved to Stroud a year ago.

*Tickets: £8; concession to full time students & Atelier members £6; drink and snack included*



# workshop

## Indigo Dying Marianne van der Tas

workshop

**Saturday 9 May 10am – 4pm**

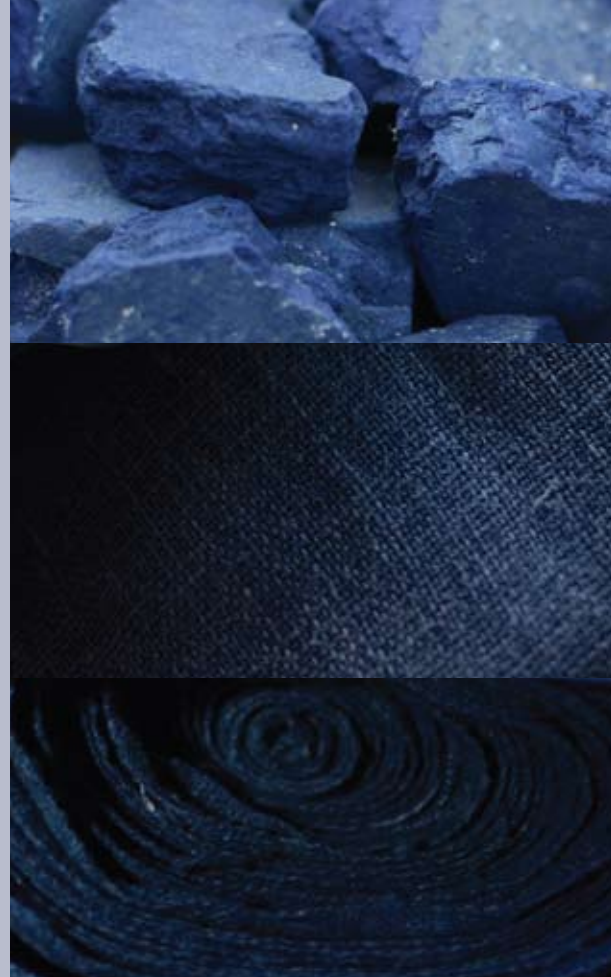
**Atelier, 19a Lower Street, Stroud GL5 2HT**

You will be preparing your material and creating patterns by different methods such as tie-dying and shibori.

We will be dipping the materials (silk, linen, yarn) in the dye vat colouring it a beautiful Indigo blue. Materials are not included so please bring approximately 100 grams of your own materials. There will be some linen, silk and yarn for sale on the day. You can colour scarves, a silk top or some fleece and yarn.

*Fee: £65; concessions for full times students & Atelier members £60; light lunch and refreshment included*

www.sitselect.org



indigo images © John Ingledeew/sitselect

atelier select

# atelier textile craft club + workshops



47

**Line and layer: transparency in textiles**  
**Ruth Singer**

2 day workshop

**Thursday 14 – Friday 15 May 10am – 4.30pm**

**Atelier, 19a Lower Street, Stroud GL5 2HT**

Over two intensive and exciting days, we will explore textile art techniques using transparent fabrics to create shadow and subtle depth. We will work with layers of fabrics such as silk organza, chiffon, vintage lace, net, gauze and organdie as well as paper and other found materials, and use delicate hand-worked techniques to create interesting effects. Techniques will include innovative appliqué techniques, reverse appliqué, stuffing, shadow quilting, shadow embroidery, bonding and layering as well as new techniques Ruth has developed to make the best use of translucent fabrics which she uses in her own work. Although the techniques require care and precision, none of them are



difficult and are ideal for any textile artist, embroiderer or quilter to try out. The techniques are equally suitable for experimental textiles and fashion.

*Fee: £135; concessions Friends SITselect & Atelier Members £99; includes materials, light lunch and refreshments*





# workshop

## Work with Denim: denim apron Tara Wingate

**Saturday 16 May 10am – 4pm**

**Sunday 17 May 10am – 3pm**

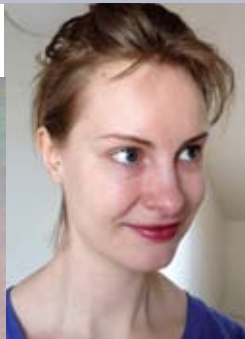
2 day workshop

The denim apron. Functional, unassuming and simple in shape it has long been the protective workwear garment for many people in their craft and profession. From potters, silversmiths, leather workers to baristas, grocers, barbers, there has been a new resurgence as more people adopt and adapt it for their own tools and trade. In this workshop you will cut from denim your own bib-front multi-pocketed apron and construct; sewing durable fell seams signature to denim garments. You will be introduced to components such as rivets, eyelets, D-rings used to customize aprons. *Fee: £100; concession to full time students & Atelier members £90; includes materials, light lunch and refreshments*

www.sitselect.org



atelier select



# event

## Stroud Town Shops Trail

There will be work from *Select Trail* artists displayed in the windows of selected town shops. The *Made in Stroud* shop has a designated area for *Trail* artists' work. Pop in and plan your *Trail* route.

shops taking part are:

**Fourteen** 14 Kendrick Street

**Made in Stroud** 16 Kendrick Street

**Moonflower Fashion** 55 High Street

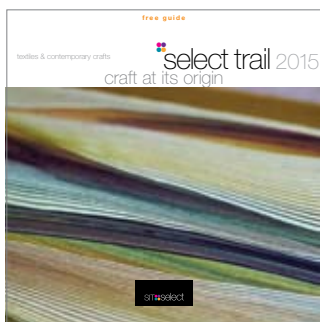
**Trading Post** 26 Kendrick Street

**Rococco** 30 Kendrick Street

**R & R Books** Unit 4, The Cross, Nelson Street

**Oxfam** 45 King Street

**Duffle** 2 John Street



## Made in Stroud Shop Screenings

**Monday – Saturday 11am – 7pm**

**16 Kendrick Street, Stroud GL5 1AA**

Films of locally based designer makers working in their studios will be filmed by University of Gloucester media students and screened in the shop window.

*In partnership with University of Gloucestershire Media Department*



out now

## NEW

### Selected Journal: ten thousand hours

**Selected** is a new bi-annual journal celebrating innovative, contemporary craftspeople working with passion. Brought to you by SITselect, its aim is to present a taste of the brilliance and the beauty that is around in the UK and the pleasure individual makers, designers and thinkers bring to our world.

It can be bought online on the SITselect website or in venues nationwide.

- \* For news & more information visit the SITselect website:  
**[www.sitselect.org](http://www.sitselect.org)**
- \* Register for SITselect newsletter by visiting:  
**[www.sitselect.org](http://www.sitselect.org)**  
and clicking on button
- \* Visit SITselect on facebook & twitter and subscribe to the SITselect Blog:  
**<http://blog.sitblog.co.uk/>**



## \* Select Trail Bus Tours

### Mini coach tours to the Trail Studios Saturday 9 May & Saturday 16 May

Sit back, watch the countryside and let the driver take the strain as you enjoy visiting the *Select Trail* artists.

*Tickets are £10 per person for each trip*

*Contact SITselect to book tickets: [www.sitselect.org](http://www.sitselect.org)*

## SITselect

### SITselect postal address:

49 Bisley Road Stroud GL5 1HF

t: +44 (0) 1453 751056 / 07767 763607

*Please note the office is not open to the public*

## Booking

Tickets may be booked by contacting the SITselect office on 01453 751056 and either sending a cheque made out to *Stroud International Textiles*, including your name, address, phone and e mail and a stamped addressed envelope or you can book and pay on line. [www.sitselect.org](http://www.sitselect.org)

*Note: the SITselect office cannot accept credit card payments over the phone.*

## Ticket Prices

The festival makes every attempt to make the entrance to all paid events as affordable to as many people as possible.

Concessions: Students and Friends of SITselect get reduced prices, see brochure for details.

For information on joining SITselect please go to our website where you can join on line or send a cheque.

*Please be prepared to show your membership card when booking or on admission to events.*



## SITselect

t: +44 (0) 1453 751056 / 07767 763607

*Please note the office is not open to the public*

### Events information

During the festival the stewards will be able to help you so do go to the main desks if you have any queries. If you wish to find out more email or contact the Festival Office: 01453 751056 [www.sitselect.org](http://www.sitselect.org)

### Stroud Tourist Information Centre

**Subscription Rooms, George Street, Stroud GL5 1AE**

**t: 01453 760960 e: [tic@stroud.gov.uk](mailto:tic@stroud.gov.uk)**

**Monday – Saturday 10am – 5pm**

The Tourist Information Centre can give you details on local accommodation and they will help with directions to the venues. You can also pick up the brochure there. [www.visitthecotswolds.org.uk](http://www.visitthecotswolds.org.uk)

### Getting to Stroud *see map on page 55*

The train and bus station are in the town centre. Parking is plentiful and the parking for the Museum is free and located next to the Stratford Park Leisure Centre. For more information contact the Tourist Information Centre.

### Accommodation

For a full list of accommodation contact the Tourist information centre. The SITselect website also has names of B & B's under visitor information. You can also source registered B & B's and hotels on [www.visitthecotswolds.org.uk](http://www.visitthecotswolds.org.uk)

### Eating & Drinking

There are many excellent cafes in the town centre and restaurants where you can enjoy a meal. Also on the outskirts of the town you will find places to dine and enjoy the countryside. The Museum in the Park serves teas coffees and drinks but no foo.

### Access

#### **Disability and pushchair access**

All venues have wheelchair access except Meme second floor and World Textiles in Bisley. Some of the studios may not have disability access such as Frogmarsh Mill. Please check before visiting as special arrangements may be possible.

#### **Disability parking**

There are many pay and display car parks around the town, all offering disability parking. Fawkes Place close to the Subscription Rooms is disabled parking.

## Venue Information

- a** Museum in the Park
- b** Subscription Rooms
- c** Lansdown Hall & Gallery
- d** Meme
- e** Atelier
- f** Hawkwood

*see page 54 and map page 55 for Stroud venues*

### **Newark Park, Ozleworth, Wotton under Edge GL12 7PZ**

You will find Newark 1¾ miles south of the junction for the A4135 on Tetbury – Dursley road and the B4058 to Wotton. Follow signpost to Ozleworth and then the Newark Park signs. Do not use your sat nav from Wotton as it detours down narrow lanes where passing is not possible.

Newark Park is located on a very narrow lane just off the A4135 at Ozleworth, just east of Wotton under Edge.

There is plenty of free parking and a café.

### **Sofa & Stuff, Woodchester Mill, North Woodchester, Stroud GL5 5NN**

**t: 01242 245215**

**e: [shop@guildcrafts.org.uk](mailto:shop@guildcrafts.org.uk)**

On the A46 halfway between Stroud and Nailsworth. ample parking and regular bus service from Stroud, Merry Walks, numbers 46 & 93. Parking available.

### **Victoria Works, London Road, Chalford GL6 8HN**

There is parking for visitors to Victoria Works Studios behind Halliday's Mill – opposite the Lavender Bakehouse café. There is also a lay-by just before Victoria Works when approaching from Stroud.

### **The Guild at 51, 51 Clarence Street, Cheltenham GL50 3JT**

**t: 01242 245215**

**e: [shop@guildcrafts.org.uk](mailto:shop@guildcrafts.org.uk)**

The Guild shop and Gallery is situated next to The Wilson museum. *see map above*

## **Liability**

*SITselect & venues cannot accept liability for any damage, injury or loss sustained by anyone while visiting a venue*

select 2015 

## Stroud International Textiles

t: +44 (0)1453 751056 / 07767 763607

*Please note the office is not open to the public*

### Stroud Town Venue Information

- a Museum in the Park, Stratford Park, Stroud GL5 4AF**  
**t: 01453 763394**  
**Tuesday – Friday 10am – 5pm**  
**Saturday & Sunday 11am – 5pm**  
*closed Mondays but note the Museum is open on Bank Holiday Mondays 11am – 5pm*  
 The Museum is half a mile from Stroud town centre.  
**Parking:** Free parking in the main Stratford Park car park beside the Leisure Centre. There is then a short walk to the Museum. Disability parking is available by phoning the Museum and they will arrange for you to drive round to the Museum entrance.  
**Buses:** The number 37 Stagecoach bus leaves the town centre from outside Lloyds Bank every 20 minutes. Ask for the Tesco's stop and cross over the road and walk a short distance through the park to the Museum. Please note there are no buses on Sundays.
- b Subscription Rooms** *see page 52*
- c Lansdown Hall & Gallery, Stroud GL5 1BB**  
**t: 01453 767576**  
 At the cross roads at the bottom of the High Street by the Greyhound Bar, turn right into Lansdown. The Gallery is along on the right. Disabled access available.
- d Meme Café Bar, 16 George Street, Stroud GL5 3DT**  
**www.memebarcfe.co.uk**  
 Directly opposite the Subscription Rooms and TIC.
- e Atelier Textile Studio, 19a Lower Street, Stroud GL5 2HT**  
**t: 01453 765248**  
 The Gallery is a 10 minute walk from Stroud centre. From the top of the High Street cross over and walk up Nelson Street, straight on into Castle Road and follow through to Lower Street. Parking available by entering the street from the Hospital end.
- f Hawkwood, Hawkwood College, Painswick Old Road, Stroud GL6 7QW**  
**t: 01453 759034**  
 To locate Hawkwood College turn up Painswick Old Road, located opposite Strafford Park on the A46 Painswick/Cheltenham Road. The College is a mile up, on the right. There is ample parking.

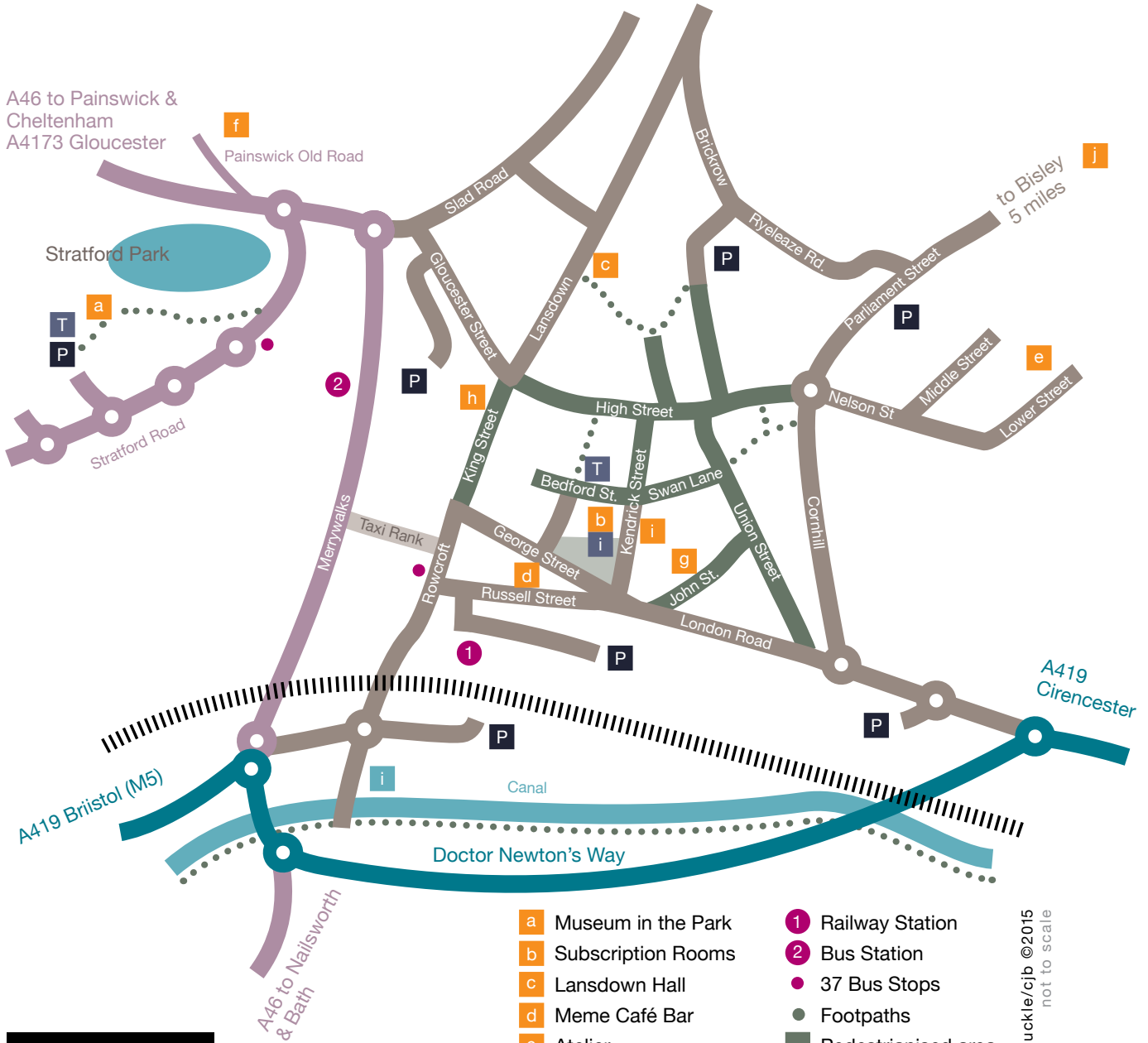
select 2015



### Liability

*SIT and venues cannot accept liability for any damage, injury or loss sustained by anyone while visiting a venue*





- |                             |                              |
|-----------------------------|------------------------------|
| <b>a</b> Museum in the Park | <b>1</b> Railway Station     |
| <b>b</b> Subscription Rooms | <b>2</b> Bus Station         |
| <b>c</b> Lansdown Hall      | <b>●</b> 37 Bus Stops        |
| <b>d</b> Meme Café Bar      | <b>●</b> Footpaths           |
| <b>e</b> Atelier            | <b>■</b> Pedestrianised area |
| <b>f</b> Hawkwood           | <b>i</b> Tourist Information |
| <b>g</b> SVA                | <b>T</b> Toilets             |
| <b>h</b> Oxfam              | <b>P</b> Parking             |
| <b>i</b> Fourteen           |                              |
| <b>j</b> World Textile Fair |                              |

map: nick buckler/cjb ©2015  
not to scale



key



## Spring Show

Wednesday 27 – Sunday 31 May

10am – 6pm Free admission

**Tetbury Market House**

Market Place, Tetbury, Gloucestershire GL8 8DA

Contemporary design and craftsmanship by members of the Guild with daily demonstrations and a special display inspired by 'The English Country Garden'

[www.guildcrafts.org.uk](http://www.guildcrafts.org.uk)

t: 01242 245215 e: [info@guildcrafts.org.uk](mailto:info@guildcrafts.org.uk)

The Gloucestershire Guild of Craftsmen is a registered charity, No. 1109160



Kristian Pettifor

# acp Gallery

- Exhibitions
- Wearable art
- Workshops
- Gallery shop

Our next festival date 17 July 2016



T 01452 814522

[www.canvasforcreativity.com](http://www.canvasforcreativity.com)

e: [info@canvasforcreativity.com](mailto:info@canvasforcreativity.com)



Registered Charity No: 1151258



*memé.*



16 GEORGE ST.  
STROUD

MEMECAFEBAR.CO.UK



CONTACT: [hello@memecafebar.co.uk](mailto:hello@memecafebar.co.uk)





Shireen Morris

# EIGHT GOOD REASONS

for visiting Frogmarsh Mill during Select Trail

Moira Buckley, Susan Early, Annie Hewett, Ursula Jeakins, Shireen Morris, Cleo Mussi, Tessa Tyldesley and Guest Exhibitor Tracie Peisley (See the Select Trail brochure for more details)

Saturdays and Sundays May 9th/10th. 16th/17th  
Open 11.00am - 6.00pm



Moira Buckley

Susan Early

Annie Hewett

Ursula Jeakins

Cleo Mussi

Tessa Tyldesley

Tracie Peisley

## FROGMARSH MILL

S. Woodchester, Stroud GL5 5ET

arts • sustainability • spirituality • well-being

# HAWKWOOD

- 10–14 May or 15-19 August Create a Singing Bowl
- 23-24 May Indigenous Coil Basket Weaving (SITselect)
- 23-24 May Mark Making & Textural Play (SITselect)
- 31 May Look Again: Photography with New Eyes
- 12-14 June Intuitive Sculpture in Clay
- 19-21 June Lifelines: Life Drawing at Midsummer
- 24 July–2 August Creative Arts Summer School
- 4-6 September Indigo Dyeing & Tapestry Weaving
- 4-6 September Winchcombe Pottery Weekend
- 18-20 September Silver Jewellery Making
- 2-4 October Skirt Design or Willow Weaving

We are delighted to be part of SITselect Festival in May 2015

Quote Seed04 to win weekend course



## OPEN DAY

Monday 4th May

10am-5pm

FREE workshops  
Tutors, Artists, Café  
Maypole, Stalls, Music  
Families welcome!

Hawkwood College  
Painswick Old Road  
Stroud GL6 7QW

seed festival  
planting big ideas



• www.hawkwoodcollege.co.uk • 01453 759034 • www.seedfestival.co.uk •

# World Textiles

**Saturday May 9th** 10.00am - 5.00pm

**Sunday May 10th** 10.00am - 4.00pm

Bisley Village Hall  
Manor Street  
Near Stroud GL6 7BJ

## Weekend 2015

www.sitselect.org

stroud spring select

### Wonderful world textiles include:

**Linda Clift & Lizzi Drake -**

Textiles, costumes and trimmings from England and France

**Martin Conlan of Slow Loris -**

Tribal Textiles from Southwest China

**Jennifer Evans -**

Decorative Textiles and Jewellery sourced in India

**Lucy Farmer of Zeitgeist -**

Fantastic Indian textiles, antique, vintage and contemporary

**John Gillow -**

African, Indian and South East Asian Textiles plus his own textile books

**Diane Logan of Customized -**

Up-cycled jackets & coats made from Welsh blankets & other textiles

**Polly Lyster: Dyeworks -**

Lovely linen, hemp and silk garments and cloths

dyed in heavenly indigo blue

**Caroline Purdy -**

Handmade knitted garments and lovely stitched linen wearables.

**Lou Taylor-Brown -**

Handcrafted jewellery & hair accessories using vintage lace,

textiles & found treasures

**Tukuru Textiles -**

Traditional textiles, clothing, fine jewellery

and crafts from South America

**Admission £1.00,**  
**children under 15 free**

Delicious food by **Woodruffs** of Stroud

Information from Bailey Curtis:

01453 823375

[bailey@baileycurtis.com](mailto:bailey@baileycurtis.com)

**Directions to Bisley**

**From M4** - exit J15 to Cirencester on A419, then follow road to Stroud for 8 miles and turn right to Bisley

**From M5** - exit J13 to Stroud, towards Cirencester then turn left for Bisley after Waitrose roundabout, turn 1st right into Field Road, up passed the hospital then turn right into Bisley Road.





## Biennale Internationale des Arts des Fibres et du Papier

**Eau - Fibre - Papier - Métamorphose**

Sat 28th March to Sat 30th May 2015

An international exhibition of fine art sculptural works on paper.

Free admission, open Mon – Sat



Brewery Court,  
Cirencester GL7 1JH  
[www.newbreweryarts.org.uk](http://www.newbreweryarts.org.uk)



workshops • exhibitions • gallery shop • resident makers • free entry

*Exhibitions at...*

**walford mill**  
**crafts** A CONTEMPORARY CRAFT VENUE  
IN WIMBORNE SHOWCASING  
LOCAL AND NATIONAL MAKERS

### WANDERLUST

**Tapestry by Jilly Edwards**  
**25 April - 31 May 2015**

*The tapestries in this exhibition explore Jilly's journeys through different landscapes.*



**YAN TAN TETHERA**  
**6 June - 12 July 2015**

*A surprising and thought provoking collaborative project with work made in response to processes and sounds of making.*

Walford Mill Crafts, Stone Lane, Wimborne, Dorset, BH21 1NL  
Tel: **01202 841400** Web: [www.walfordmillcrafts.co.uk](http://www.walfordmillcrafts.co.uk)



Supported using public funding by  
**ARTS COUNCIL ENGLAND**



**EXTREMELY** pretty,  
demure yet adventurous  
& maybe a little frisky.



**SOFAS & STUFF**

For a sofa to come home to.

**Woodchester Mill, North Woodchester, Stroud, Gloucestershire, GL5 5NN**

Open 10-5 Monday-Saturday Open 11-4 Sunday

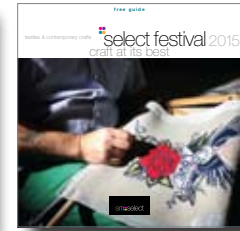
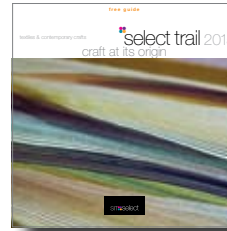
**sofasandstuff.com Tel: 01453 700812**

## SITselect: supporting innovation & creativity

**Select** rebranded in 2014 from Stroud International Textiles in order to cover all the applied arts. In case you are new to **SITselect** we have re cut our cloth and grown into new season clothes. Stroud International Textiles is still there as smart under garments but SITselect now embraces all the applied arts with textiles still very much at the heart of our work.

We are passionate about profiling the hand made, and the joy of making. We love innovative and original thinkers and we want to bring the skills of the handmade to as many people as possible. SITselect works to create opportunities for artists to develop their work. We are a unique cultural focus for craft in the area and region.

2014 also saw the launch of our new publication **Selected Journal** – ten thousand hours. *see page 50*  
In October 2015 we are launching a new event in Cheltenham – the **Select Showcase** – where designer makers from all over the UK will have stands selling and discussing their work. Joining them will be Colleges and Graduates plus the Gloucestershire Guild of Craftsmen. There will be talks, workshops, demonstrations, children's workshops, as well as SITselect's annual Conference with leading speakers from the world of design and contemporary applied arts. For full details keep an eye on the website [www.sitselect.org](http://www.sitselect.org)



## Our Thanks

Arts Council England for 18 month funding support again this year and for being there for the Arts; Renishaw plc and Chris Pockett for continued sponsorship and support for which we remain very grateful; Stroud District Council. Our thanks to all the venues who have offered exhibition space – Sofa & Stuff thank you for all your generous support; Meme Café Bar – welcome to Stroud; Newark Park National Trust again this year; Victoria Works Studios; Atelier Textile Studios; Hawkwood College; Oxfam Stroud and all the participating shops. Thank you to Gloucestershire Guild of Craftsmen for great partnering, a pleasure to work with you; Andy Christian for curating *Power of Ten* and for remaining calm and professional at all times; Charlotte Abrahams for fabulous wallpaper exhibitions – lovely to work with you again this year. And I cannot forget Chris J Bailey for his excellence and design skills and for whipping me into action and not allowing any slacking. Cheers Chris.

# selvedge SPRING FAIR 2015

As part of our "Spring tour" Selvedge is coming to Stroud. Timed to coincide with SIT Select our Spring Fair will introduce visitors to 30 exhibitors who craft truly individual products, a curated range of beautiful antique textiles, ceramics, jewellery and baskets. The ideal addition to a wonderful weekend at the Textile Festival.

*Saturday 16 May 2015, 9-4. The Subscription Rooms, George Street, Stroud, Gloucestershire, GL5 1AE*



*Tickets £3.50, available online or on the door*

[www.selvedge.org](http://www.selvedge.org)



## Acknowledgments

Funding & Sponsorship:

**Arts Council England**

**Renishaw plc**

**Stroud District Council**

Inkind Support:

**Museum in the Park**

**Sofas & Stuff**

**Atelier**

**Hawkwood**

**Newark Park National Trust**

**Victoria Works**

**Meme**

**University of Gloucestershire**

**Media & Film dept**

## Patrons

**Professor Simon Olding**

**Mary La Trobe Bateman OBE**

**Jilly Edwards**

**Margaret Benton**

**Lulu Guinness OBE**

**Felicity Aylief**

Editor **Lizzi Walton**

Design **Chris J Bailey**

Published by **SITselect**

Print **Severn** [www.severnprint.co.uk](http://www.severnprint.co.uk)



t: +44 (0) 1453 751056

m: 07767 763607

e: [info@stroudsit.org](mailto:info@stroudsit.org)

w: [www.sitselect.org](http://www.sitselect.org)



LOTTERY FUNDED



National Trust



chosen Pyx



right: rozanne hawksley back cover: cole & son







[www.sitselect.org](http://www.sitselect.org)

design: chris j bailey ©2015 published by SITselect ©2015

