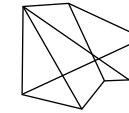


13TH ELIA BIENNIAL CONFERENCE  
IN GLASGOW

# LOCATION AESTHETICS

13-15  
NOVEMBER  
2014

programme



<b>Introduction</b>	<b>05</b>
<b>Welcome to Glasgow</b>	<b>09</b>
<b>Event Timetable</b>	<b>15</b>
<b>Opening Session</b>	<b>21</b>
<b>Plenary Sessions</b>	<b>23</b>
<b>Table Talks</b>	<b>29</b>
<b>Pecha Kucha</b>	<b>31</b>
<b>Mobile Sessions</b>	<b>35</b>
<b>Panel Sessions</b>	<b>39</b>
<b>Thematic Sessions</b>	<b>43</b>
<b>Open Space</b>	<b>47</b>
<b>Cultural Events</b>	<b>51</b>
<b>Members' Events</b>	<b>53</b>
<b>Speakers' Biogs</b>	<b>55</b>
<b>Practical Info</b>	<b>57</b>
<b>Notes + Inspiration</b>	<b>60</b>

**Images (front cover)**

RCS BA Modern Ballet & BA Digital  
Film and TV, *Bridge Week/Blossom Ball*,  
Ting Chen, MDes Fashion + Textiles, GSA

**Images (left)**

RCS BA Musical Theatre, *Carousel*  
Timorous Beasties, *Marble Gum*  
print, wallpaper

**Images**

- <sup>1/</sup> Lighting Design by Simon Corder, New Wynd Lane
- <sup>2/</sup> Mackintosh Door, Theresa Malaney, M.Litt Fine Art Practice, GSA
- <sup>3/</sup> RCS Scottish Music, *Celtic Connections*



WELCOME TO THE 13TH ELIA BIENNIAL CONFERENCE:  
 LOCATION  $\rightleftharpoons$  AESTHETICS

LOCATION  $\rightleftharpoons$   
**AESTHETICS**

**Dear Participants,** we are very pleased to welcome you to the vibrant and cosmopolitan city of Glasgow to participate in the 13th ELIA Biennial Conference, hosted by the **Royal Conservatoire of Scotland** and **The Glasgow School of Art.**

**The ELIA Biennial Conference is established as a major event for a large number of institutes of higher arts education in Europe and beyond. We meet, we share, we discuss, we celebrate, we establish new links, and sometimes we change our views.**

This year's conference theme LOCATION=AESTHETICS focuses on the relationship between the creative and the city and the dynamic interplay between place, culture, creativity and the artist. Recognising that the arts are both the most local and the most international of activities – proud of their traditions and identity, but at their most exciting when they break down barriers and cross borders. LOCATION=AESTHETICS will explore the cultural, social and economic role that creative individuals and institutions play in creating and transforming a city, regional or national identity and place in the world.

We are pleased to offer you a rich conference programme, including high profile speakers, plenary discussions, roundtables, mobile workshops, pecha kucha presentations, panels, networking events and much more and we will dance our hearts out at the closing party.

We are very pleased that the NEU/NOW LIVE Festival is organised this year to coincide with the conference, making it possible for delegates to enjoy the exhibitions, theatres shows, film viewings of the selected works of art graduates from all over Europe.

On behalf of the steering group, we wish you an inspiring 13th ELIA Biennial Conference and an enjoyable time in Glasgow.

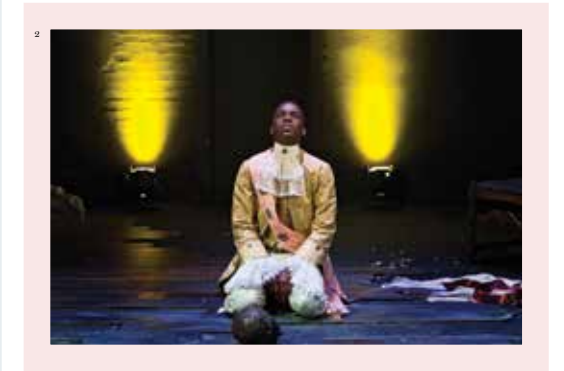
The Conference Steering Committee

**“ This year... focuses on the relationship between the creative and the city and the dynamic interplay between place, culture, creativity and the artist.”**



#### Images

- <sup>1/</sup> *Hotel Man*, Kris Cockburn, Communication Design, GSA  
<sup>2/</sup> RCS BA Acting, *Victory*, Tron Theatre  
<sup>3/</sup> *Fashion Culture* at Merchant City Festival. Image: Callum Rice



**Images**

- <sup>1/</sup> Duke of Wellington (plus cone), GoMA
- <sup>2/</sup> *Totentanz XLIV*, Alex Kausik, Painting + Printmaking, GSA
- <sup>3/</sup> RCS BA Contemporary Performance Practice, *Into the New*



WELCOME TO THE 13TH ELIA BIENNIAL CONFERENCE:  
LOCATION ⇌ AESTHETICS

# WELCOME TO GLASGOW

**Glasgow is a city where grit and glamour collide** – where beautiful architecture and green spaces sit alongside relics of an industrial past. The cultural heart of Scotland, Glasgow is a cosmopolitan, vibrant city, widely recognised as a major influence on European art, design and architecture.

**WELCOME BY THE HOSTS**

It is a genuine thrill to welcome you to our city – Glasgow.

The Glasgow School of Art and the Royal Conservatoire of Scotland, as close friends and neighbours, are delighted to have collaborated together in the creation of this 13th ELIA Biennial Conference. Our two institutions are natural partners, sharing a common mission to offer excellent Higher Arts education to students of our various disciplines. The fact that we are, quite literally, neighbours means that there is even greater attraction to working together.

Our wonderful city is a fundamentally creative place and the role of the Arts and of artists in the daily life of Glasgow is highly valued by its citizens.

The streets, museums and galleries, theatres, concert halls and many buildings in the city embrace artistic activity and artists. Participation in the arts is so easy to access and the history of artistic activity in Glasgow is rich.

In welcoming you to Glasgow, we invite you to immerse yourself fully in the conference activities. Whether you are dining, discussing, listening, debating, visiting some of our arts organisations, viewing performance and exhibits in the Neu/Now Festival programme or simply just soaking up the buzz of the city, we hope you will share our sense of joy in this great place that has, at its very heart, artists and their art. Together we have provided education to thousands of artists from all disciplines from all over the world, many of whom remain here to work. We are jointly proud of that fact and we know that the City of Glasgow celebrates that achievement with us.

We hope you will enjoy your time here as our guests.

**Professor Maggie Kinloch** FHEA

Deputy Principal, Royal Conservatoire of Scotland

**Professor Linda Drew**

Deputy Director, The Glasgow School of Art

“Glasgow is a city where grit and glamour collide...”

**GLASGOW AND VENUES****THE CITY OF GLASGOW**

Glasgow is a city where grit and glamour collide – where beautiful architecture and green spaces sit alongside relics of an industrial past. The cultural heart of Scotland, Glasgow is a cosmopolitan, vibrant city, widely recognised as a major influence on European art, design and architecture. Rich with national and major museums, galleries and venues to explore, host of the 2014 Commonwealth Games and a UNESCO City of Music, Glasgow’s cultural landscape is a joy to explore.

**THE ‘GLASGOW MIRACLE’**

The term ‘Glasgow Miracle’ was coined by lecturer Hans-Ulrich Orbist to describe the emergence of Glasgow’s famously vibrant art scene, linked to graduates of The Glasgow School of Art working in the city, establishing studio spaces and artist-led galleries such as Transmission and Wasps, and providing a network for others to do the same. As a result, Glasgow offers a multi-tiered system of artist-run spaces and more established galleries providing artists with opportunities to exhibit at every stage of their development.

**GLASGOW ROYAL CONCERT HALL**

The main venue is the Glasgow Royal Concert Hall, one of Scotland’s premier music venues. As a delegate you won’t fail to be caught up in its magic, as it proudly looks down Buchanan Street over the city. Built for Glasgow’s reign as European Capital of Culture, this epic multi-purpose venue has a busy year-round programme of music and events and is the main venue for Celtic Connections, the world’s largest winter music festival and is the home of the Royal Scottish National Orchestra.

**Images**

<sup>1/</sup> Ms B Presents... GLAM, The Corinthian.

Image: Callum Rice

<sup>2/</sup> Ca'd'Oro by John Honeyman

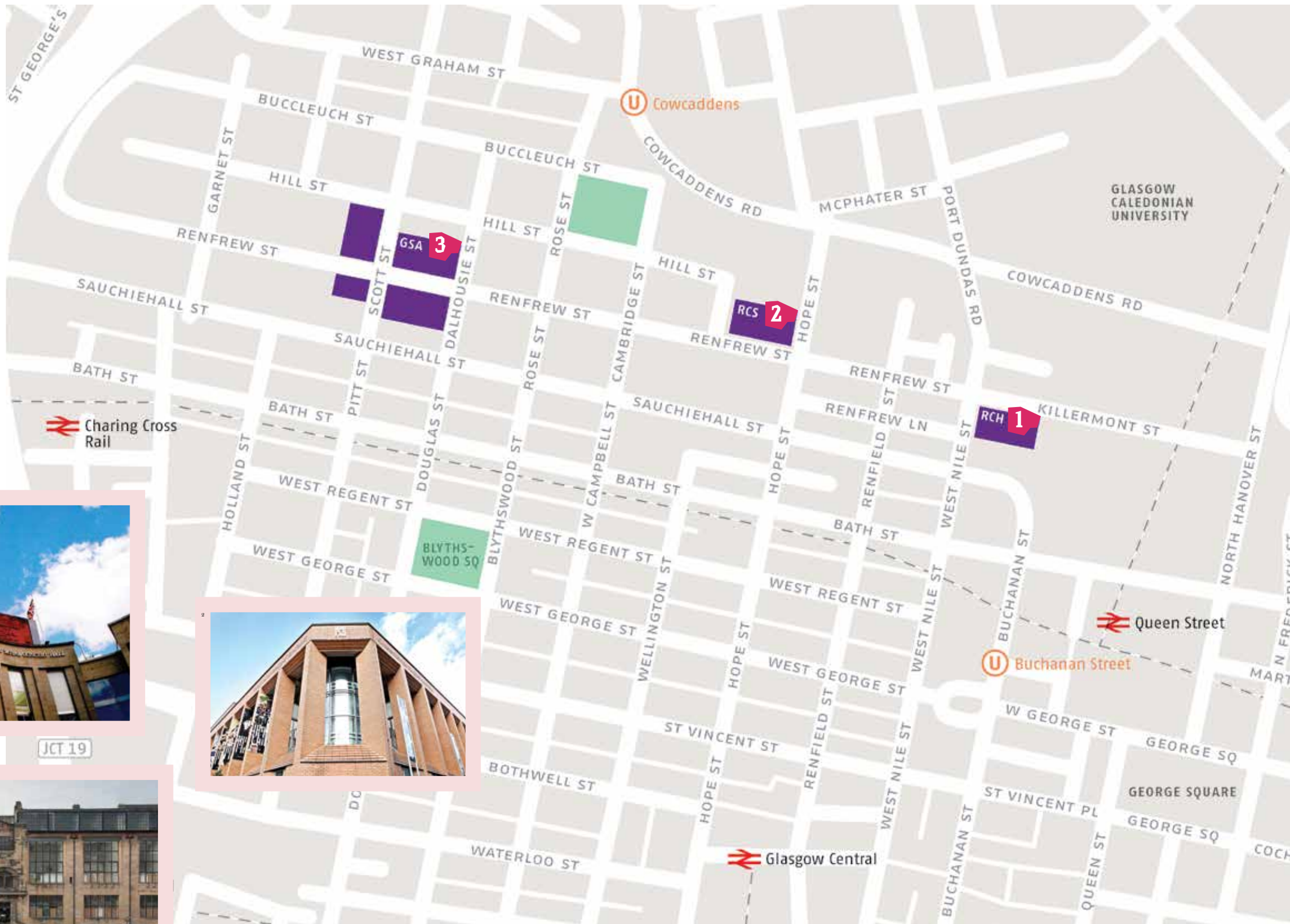
<sup>3/</sup> RCS Symphony Orchestra & BBC SSO

**1: GLASGOW ROYAL CONCERT HALL**  
 2 Sauchiehall St, Glasgow G2 3NY

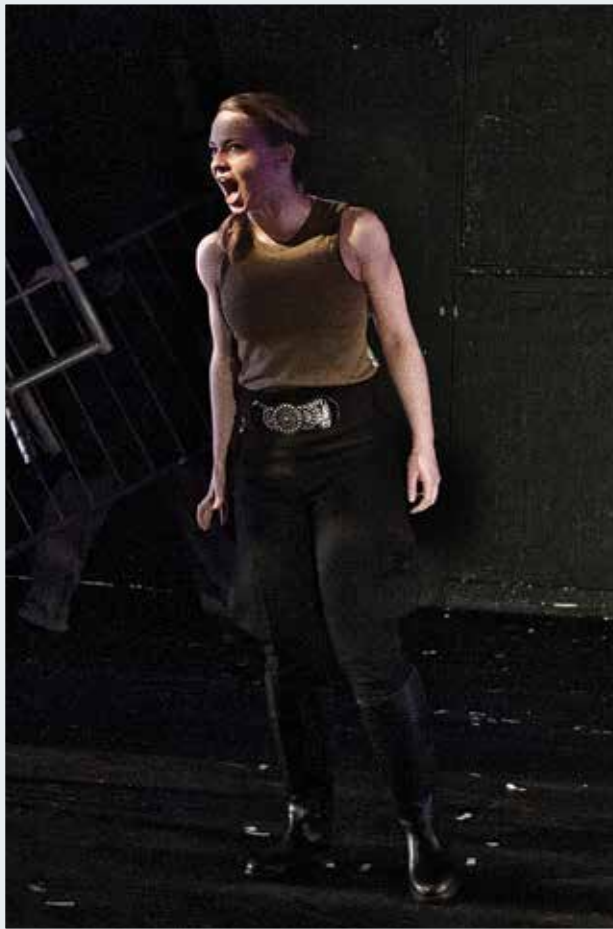
**2: ROYAL CONSERVATOIRE OF SCOTLAND**  
 100 Renfrew St, Glasgow G2 3DB

**3: THE GLASGOW SCHOOL OF ART**  
 164 Renfrew St, Glasgow G3 6RQ

**Images**  
 1/ Glasgow Royal Concert Hall  
 2/ Royal Conservatoire of Scotland  
 3/ The Glasgow School of Art



- Images**
- <sup>1/</sup> RCS BA Acting, *Coriolanus*
  - <sup>2/</sup> 3/7, Lotte Letch, Silversmithing + Jewellery, GSA
  - <sup>3/</sup> Kingston Bridge, Glasgow



WELCOME TO THE 13TH ELIA BIENNIAL CONFERENCE:  
LOCATION  $\rightleftharpoons$  AESTHETICS

# EVENT TIMETABLE



Full per day programme timetable for the ELIA Biennial Conference  
12–15 November 2014.



## WEDNESDAY 12 NOVEMBER

TIME	ACTIVITY	SPEAKER	VENUE
14:00-17:00	<b>Registrations</b>		<b>Glasgow Royal Concert Hall:</b> Main Foyer
14:00-16:00	<b>Tours</b> (14.00, 15.00, 16.00) The Glasgow School of Art		<b>Meeting Point:</b> The Glasgow School of Art Reid Building
14:00-16:00	<b>Tours</b> (14.00, 15.00, 16.00) Royal Conservatoire of Scotland		<b>Meeting Point:</b> Royal Conservatoire of Scotland
18:00-19:30	<b>NEU/NOW Festival Opening</b>		<b>The Glasgow School of Art:</b> Reid Building Exhibition Space
19:30	<b>Blind Date Dinner</b>		<b>Meeting Point:</b> Princes Square

## THURSDAY 13 NOVEMBER

TIME	ACTIVITY	SPEAKER	VENUE
08:30-09:30	<b>Coffee and Registrations</b>		<b>Glasgow Royal Concert Hall:</b> Main Foyer
09:30-11:00	<b>Grand Opening</b>	Maggie Kinloch, Liz Cameron, Kieran Corcoran, Gerald Bast, Pier Luigi Sacco	<b>Glasgow Royal Concert Hall:</b> Auditorium
11:00-12:00	<b>Table Talks</b>		<b>Glasgow Royal Concert Hall:</b> Strathclyde Suite Exhibition Hall
12:00-14:00	<b>Lunch with Pecha Kucha</b> Identity/Diversity	Andrew Kulman, Rania Khalil, Sophia Hadjipapa-Gee	<b>Glasgow Royal Concert Hall:</b> Exhibition Hall
	Regionalism/Globalism	Conor McGrady, Franziska Nyffenegger, Tanya de Paor, Lynda Devenney	Buchanan Suite
	Homecoming/Nomadism	Hana Miletic, Richard Vodicka, Marika Hedemyr	Green Room
	Economy/Culture	Lars Ebert, Lesley Bain, Bridget Kievits	Strathclyde Suite
14:00-15:00	<b>Plenary Session</b>	Geoffrey Crossick	<b>Glasgow Royal Concert Hall:</b> Auditorium
15:00-18:00	<b>Mobile Sessions</b>		Various locations <b>Meeting Point:</b> Glasgow Royal Concert Hall Main Foyer
19:00-21:00	<b>Civic Reception</b>		<b>City Chambers</b>
18:00	<b>NEU/NOW PROGRAMME</b>		

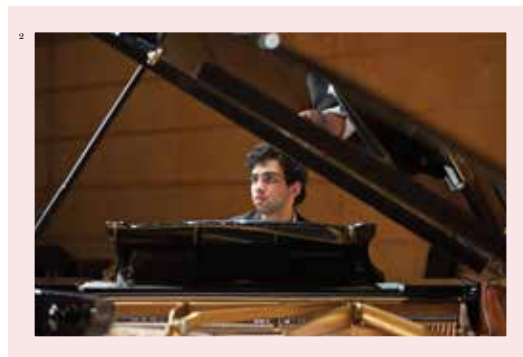
## FRIDAY 14 NOVEMBER

TIME	ACTIVITY	SPEAKER	VENUE
08:30-09:30	<b>Coffee and Registrations</b>		<b>Glasgow Royal Concert Hall:</b> Main Foyer
09:30-10:30	<b>Plenary Session</b>	Josette Bushell-Mingo	<b>Glasgow Royal Concert Hall:</b> Auditorium
10:30-12:00	<b>Table Talks</b>		<b>Glasgow Royal Concert Hall:</b> Strathclyde Suite Exhibition Hall
12:00-13:30	<b>Lunch</b>		<b>Glasgow Royal Concert Hall:</b> Main Foyer, Foyer 1st Floor
13:30-14:30	<b>Plenary Session</b>	Martin Boyce	<b>Glasgow Royal Concert Hall:</b> Auditorium
14:30-16:00	<b>Panel Sessions</b> Creative Cities/Creative Industries	Paul Williams, Naomi Turner, Lia Ghilardi	<b>Glasgow Royal Concert Hall:</b> Buchanan Suite
	The Artist's Place	Dana Whabira, Leonidas Martin, Sorcha Dallas	Green Room
	The Role of the Art Schools	Tom Inns, Ron Burnett, Hilary Boulding	Strathclyde Suite
16:00-16:30	<b>Coffee</b>		<b>Glasgow Royal Concert Hall:</b> Main Foyer, Foyer 1st Floor
16:30-18:00	<b>Thematic Sessions</b> Identity/Diversity	Anna Birch, Inga Bryden, Andy Milligan	<b>Glasgow Royal Concert Hall:</b> Exhibition Hall
	Regionalism/Globalism	Marc Glaudemans, Nancy de Freitas, Paolo Cardini	Buchanan Suite
	Homecoming/Nomadism	Jeremy Diggle, Renske de Groot, Kit Thompson	Green Room
	Economy/Culture	Naomi Sex, Carola Boehm, Jane Linden and Jodie Gibson, Jacqueline Holzer, Brenda Duggan	Strathclyde Suite
18:00-18:45	<b>Closing Session</b>		<b>Glasgow Royal Concert Hall:</b> Auditorium
18:00	<b>NEU/NOW PROGRAMME</b>		

## SATURDAY 15 NOVEMBER

TIME	ACTIVITY	SPEAKER	VENUE
08:30-09:30	<b>Registrations</b> ELIA General Assembly		<b>The Glasgow School of Art:</b> Reid Building Foyer
09:30-13:00	<b>ELIA General Assembly</b>		<b>The Glasgow School of Art:</b> Reid Building Auditorium
13:00-14:30	<b>NEU/NOW Gallery Talks Tour</b>		<b>The Glasgow School of Art:</b> Reid Building Main Gallery
14:30-16:00	<b>Open Space</b>		<b>The Glasgow School of Art:</b> Reid Building
	<b>ELIA Session:</b> EQ-Arts	Lars Ebert	General Seminar Room
	<b>Thematic Session:</b> Visual & Fine Arts	Edward Chell, Jason Bowman, Helen Gorril and Judith Mottram, Derrick Cherrie	Principal Seminar Room
	<b>Network Session:</b> CUMULUS	Marja Nurminen	Directorate Meeting Room
	<b>Thematic Session:</b> Research	Priska Gisler and Elke Bippus, Rolf Hughes, Alexander Damianisch	Auditorium
16.00-16.30	<b>Coffee</b>		<b>Royal Conservatoire of Scotland</b>
16.30-18.00	<b>Open Space</b>		<b>Royal Conservatoire of Scotland:</b>
	<b>Network Session:</b> PARADOX	Ana García López	Rehearsal Room 3
	<b>Thematic Session:</b> Performing Arts	Jo Ronan, Clodagh Emoe, Hilary Jones and Ros Steen, Anthony Schrag and Alexia Melior	Movement Room 1
	<b>ELIA Session:</b> European Programmes	Truus Ophuijsen	Rehearsal Room 4
	<b>ELIA Session:</b> Cultural Entrepreneurship	Georg Russegger	Rehearsal Room 2
	<b>Thematic Session:</b> Research	Ingrid Elam, Mick Wilson and Johan Verbeke, Sally Stewart, Claus Peder Pederson	<b>The Glasgow School of Art:</b> Reid Building Auditorium
21:00-01:00	<b>Closing Party</b>		<b>The Glasgow School of Art:</b> Students' Association, Assembly Building

**Images**  
 1/ Royal Conservatoire  
 of Scotland. Images: KKDundas



WELCOME TO THE 13TH ELIA BIENNIAL CONFERENCE:  
 LOCATION  $\rightleftharpoons$  AESTHETICS

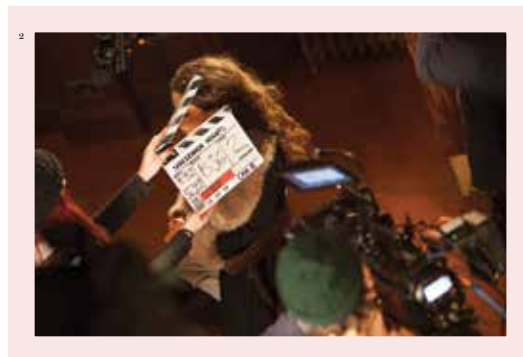
# OPENING SESSION



**The 13th edition of the ELIA Biennial Conference** will be opened by a performance that is an exciting example of the ongoing collaboration between Royal Conservatoire of Scotland and The Glasgow School of Art, featuring students from both institutions and many disciplines, among them the GSA Choir, Brass, Scottish Music and Musical Theatre. The delegates are further welcomed by the FHEA Deputy Principal Maggie Kinloch, Councillor and Executive Member for Economic Development Dr. Liz Cameron and the ELIA President Kieran Corcoran. Gerald Bast, the Rector of the University of Applied Arts Vienna, addresses the conference theme LOCATION  $\rightleftharpoons$  AESTHETICS during this official Opening Session; followed by the plenary session of keynote speaker Pier Luigi Sacco.

**Images**

- <sup>1/</sup> *Empire* (1998) Douglas Gordon  
<sup>2/</sup> RCS BA Acting, BBC River City set  
<sup>3/</sup> *Dress in Tree*, Emma Zetterstrom,  
 Fine Art Photography, GSA



WELCOME TO THE 13TH ELIA BIENNIAL CONFERENCE:  
 LOCATION  $\rightleftharpoons$  AESTHETICS

# PLENARY SESSIONS

**The plenary sessions feature keynote speakers** offering thought provoking presentations to further promote dialogue based on LOCATION  $\rightleftharpoons$  AESTHETICS. A series of questions will be raised to provide launch points for discussion, focused on the relationship between the creative and the city and the dynamic interplay between place, culture, creativity and the artist.

THURSDAY 13 NOVEMBER. 09:30-11:00  
GLASGOW ROYAL CONCERT HALL:  
AUDITORIUM



## **PIER LUIGI SACCO**

Master of Ceremony: Carla Delfos

Professor of Cultural Economics and Deputy Rector for International Affairs at IULM University in Milan, Director of Siena its candidacy for the European Capital of Culture 2019 and Scientific Director of the Fondazione Campus.

THURSDAY 13 NOVEMBER. 14:00-15:00  
GLASGOW ROYAL CONCERT HALL:  
AUDITORIUM



## **GEOFFREY CROSSICK**

Master of Ceremony: Gerald Bast

Distinguished Professor of the Humanities in the School of Advanced Study, University of London and Director of the AHRC Cultural Value Project.

FRIDAY 14 NOVEMBER. 09:30-10:30  
GLASGOW ROYAL CONCERT HALL:  
AUDITORIUM

FRIDAY 14 NOVEMBER. 13:30-14:30  
GLASGOW ROYAL CONCERT HALL:  
AUDITORIUM



## JOSETTE BUSHELL-MINGO

Master of Ceremony: Maggie Kinloch

Artistic director for The Swedish National Touring Theatre ensemble, Co-Founder PUSH, Officer of the Order of the British Empire and board member of the Swedish Film Institute.



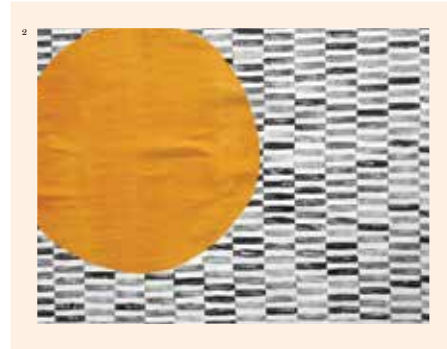
## MARTIN BOYCE

Master of Ceremony: Linda Drew

Scottish sculptor and multimedia installation artist, Turner Prize Winner 2011 for his installation *Do Words Have Voices*.

**Images**

- <sup>1/</sup> Interior, The Arches, Glasgow  
<sup>2/</sup> *Natural materials and man-made interventions*, Karen Hale, Fashion + Textiles, GSA  
<sup>3/</sup> MacLennan Arch, Glasgow Green, iStock/Getty  
<sup>4/</sup> Emma Zetterstrom, Fine Art Photography, GSA



THURSDAY 13 NOVEMBER. 11:00–12:00  
 FRIDAY 14 NOVEMBER. 10:30–12:00  
 GLASGOW ROYAL CONCERT HALL:  
 STRATHCLYDE SUITE, EXHIBITION HALL

# TABLE TALKS

**The table talks give delegates the opportunity to discuss the conference topics in a more informal atmosphere.** Delegates will be divided into small groups, designed to facilitate dialogue, encourage networking and the making of new contacts. The conference organisers will instruct the conference participants to choose a new group composition for each table talk; increasing networking opportunities. On the back of each delegate's badge you will find more information on your assigned group and room.

**Images**

- <sup>1/</sup> Clyde Arc or 'Squinty Bridge'
- <sup>2/</sup> GoMA
- <sup>3/</sup> The RCS BA Modern Ballet



THURSDAY 13 NOVEMBER. 12:00-14:00  
 GLASGOW ROYAL CONCERT HALL:  
 EXHIBITION HALL, BUCHANAN SUITE,  
 GREEN ROOM, STRATHCLYDE SUITE

# PECHA KUCHA

**Delegates can choose between four parallel sessions** to attend while having lunch. During each session a different conference subtheme will be addressed by each of the presenters in the Japanese format of Pecha Kucha: 20 slides shown for 20 seconds each.



**IDENTITY/DIVERSITY**  
**EXHIBITION HALL**  
 Master of Ceremony: Marianne Greated

NAME/PRESENTER	INSTITUTION	TITLE	COUNTRY
<b>Andrew Kulman</b>	Birmingham City University	Lost in Translation: differentiation in home and overseas students expectations	United Kingdom
<b>Rania Khalil</b>	Theatre Academy Helsinki, University of the Arts Helsinki	Palestinian Wildlife Series: Approaching Kinesthetic Video Art	Finland
<b>Sophia Hadjipapa-Gee</b>	European University Cyprus	Metromentality	Cyprus

**HOME COMING/NOMADISM**  
**GREEN ROOM**  
 Master of Ceremony: Anna Birch

NAME/PRESENTER	INSTITUTION	TITLE	COUNTRY
<b>Hana Miletic</b>	LUCA School of Arts, Campus Sint-Lukas, Brussels	Le Cul entre deux chaises	Belgium, Croatia
<b>Richard Vodicka</b>	Tomas Bata University in Zlin	Little Differences	Czech Republic
<b>Marika Hedemyr</b>	University of Gothenburg	The Event Series	Sweden

**REGIONALISM/GLOBALISM**  
**BUCHANAN SUITE**  
 Master of Ceremony: Vicky Gunn

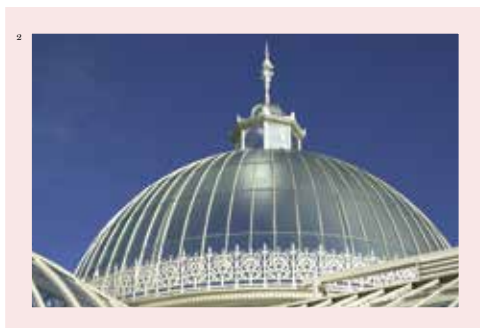
NAME/PRESENTER	INSTITUTION	TITLE	COUNTRY
<b>Conor McGrady</b>	Burren College of Art	Redefining the Rural	Ireland
<b>Franziska Nyffenegger</b>	Lucerne University of Applied Sciences and Arts	Swissness, Globalised: on crosses, cows, and chocolate	Switzerland
<b>Tanya de Paor</b>	Mary Immaculate College, University of Limerick	Playing Between the Spaces: from seed to setting	Ireland
<b>Lynda Devenney</b>	Dun Laoghaire Institute of Art Design and Technology	Re-mapping the City: artists and new technologies	Ireland

**ECONOMY/CULTURE**  
**STRATHCLYDE SUITE**  
 Master of Ceremony: Celia Duffy

NAME/PRESENTER	INSTITUTION	TITLE	COUNTRY
<b>Lars Ebert</b>	ELIA	Participation on Trial: The PROS AND CONS and the DO'S AND DON'TS	The Netherlands
<b>Lesley Bain</b>	Framework Cultural Placemaking	Art in the Participatory City	United States
<b>Bridget Kievits</b>	Amsterdam School of the Arts	The Amsterdam School of the Arts and its role in the cultural centre of the Netherlands	The Netherlands

**Images**

- <sup>1/</sup> *Scottish Landscape Institute, Harriet Ridout, Architecture, GSA*
- <sup>2/</sup> *Kibble Palace, Botanic Gardens*
- <sup>3/</sup> *Kelvingrove Museum and Art Gallery*
- <sup>4/</sup> *RCS BA Musical Theatre, Carousel*



THURSDAY 13 NOVEMBER. 15:00-18:00  
 VARIOUS LOCATIONS  
 MEETING POINT:  
 GLASGOW ROYAL CONCERT HALL,  
 MAIN FOYER

# MOBILE SESSIONS

**Glasgow is a vibrant, cultured and creative city.** Artists and performers of all disciplines live, work and collaborate here; they have always been at the heart of Glasgow's cultural and economic life. The mobile sessions are designed to give delegates the opportunity to engage with the city's wider cultural community and landscape.

Glasgow is a vibrant, cultured and creative city. Artists and other creatives of all disciplines live and work here; they have always been at the very heart of Glasgow's cultural and economic life. To allow delegates to engage with the city and its leading arts venues in a broader sense, we have designed the Mobile Sessions programme. Each session will take delegates to an interesting place in the city where we would like them to meet practitioners and producers. Through dialogue they will explore the relationship between art, the artist and their combined connection to their city.

Mobile Sessions have been pre-booked by delegates when registering online for the conference. Your selected session, along with more information about it, will be indicated on the back of your delegate badge. Sessions are live around the city and thus are subject to change.

### SESSION 1

**Venue:** The Arches

**Discipline:** Theatre, Music, Visual Art

**Sub theme(s):** IDENTITY/DIVERSITY, ECONOMY/CULTURE

### SESSION 2

**Venue:** BBC Pacific Quay

(British Broadcasting Corporation)

**Discipline:** Film, Television, Digital Design

**Sub theme(s):** REGIONALISM/GLOBALISM, ECONOMY/CULTURE

### SESSION 3

**Venue:** Citizens Theatre

**Discipline:** Theatre, Heritage

**Sub theme(s):** IDENTITY/DIVERSITY, REGIONALISM/GLOBALISM, ECONOMY/CULTURE

### SESSION 4

**Venue:** Gallery of Modern Art (GOMA)

**Discipline:** Visual Art

**Sub theme(s):** REGIONALISM/GLOBALISM, HOMECOMING/NOMADISM

**Paper Presentation:** Ben Spencer-VELOCITY

### SESSION 5

**Venue:** Kelvingrove Art Gallery and Museum

**Discipline:** Visual Art, Heritage

**Sub theme(s):** REGIONALISM/GLOBALISM, HOMECOMING/NOMADISM, ECONOMY/CULTURE

### SESSION 6

**Venue:** Glasgow Women's Library/People's Palace

**Discipline:** Visual Art, Heritage, Regeneration

**Sub theme(s):** REGIONALISM/GLOBALISM, HOMECOMING/NOMADISM, ECONOMY/CULTURE

### SESSION 7

**Venue:** The Lighthouse

**Discipline:** Visual Art, Design

**Sub theme(s):** REGIONALISM/GLOBALISM, ECONOMY/CULTURE

### SESSION 8

**Venue(s):** King St Cluster:

The Briggait, Transmission and Modern Institute

**Discipline:** Visual Art

**Sub theme(s):** REGIONALISM/GLOBALISM, HOMECOMING/NOMADISM, ECONOMY/CULTURE

### SESSION 9

**Venue(s):** Trongate Cluster: Tron Theatre and Britannia Panopticon

**Discipline:** Theatre, Music, Film, Heritage

**Sub theme(s):** IDENTITY/DIVERSITY, HOMECOMING/NOMADISM, ECONOMY/CULTURE

### SESSION 10

**Venue(s):** Speirs Locks Cluster: Wallace Studios at Speirs Locks, Scottish Opera, Glue Factory and Whisky Bond

**Discipline:** Theatre, Opera, Visual Art, Regeneration, Heritage, Architecture, Dance, Education

**Sub theme(s):** IDENTITY/DIVERSITY, ECONOMY/CULTURE



**Images**  
<sup>1/</sup> Graduate Collection 2014, Matthew Allen, Fashion + Textiles, GSA  
<sup>2/</sup> RCS Opera, *La clemenza di Tito*  
<sup>3/</sup> RCS Symphony Orchestra



FRIDAY 14 NOVEMBER. 14:30-16:00  
 GLASGOW ROYAL CONCERT HALL:  
 BUCHANAN SUITE, GREEN ROOM,  
 STRATHCLYDE SUITE

# PANEL SESSIONS

**A selected panel of experts will address specific themes,** guided by experienced journalists to encourage an interactive discussion between the panelists and delegates. Delegates can choose between three parallel panel sessions.

A brief presentation by each panelist initiates a debate, inspiring an open conversation to address the themes from different perspectives, offer a range of solutions and fully explore the topic. Delegates can choose between three panel sessions.

## CREATIVE CITIES/ CREATIVE INDUSTRIES

### BUCHANAN SUITE

**Chair:** Sally Taylor

**Paul Williams** is the director of Stanton Williams, a leading architectural design practice which he founded in 1985 with Alan Stanton. He was the first design trained British architect to be registered by ARB (Architects Registration Board), was awarded the title of Royal Designer (RDI) in 2005 and received an OBE for services to architecture in 2014.

**Lia Ghilardi** is a creative polymath and the founder and director of Noema, a London based organisation working internationally to deliver place mapping and strategic cultural planning projects. Internationally recognised as a leader in the field of cultural urban development, she has worked for more than twenty years with civic leaders, urban designers, architects and arts organisations to provide creative and integrated solutions to the challenges of place making in contemporary cities.

**Naomi Turner** holds professional and academic interests in design policy and industrial strategy in the 20th century. She currently works as Head of Manufacturing, Design and Innovation at Policy Connect, engaging Parliamentarians and Whitehall about the importance of design and the future role of manufacturing in rebalancing the economy. Previous to this post, Naomi worked for a Member of Parliament in the areas of housing and social policy. She has also worked as a Researcher at the V&A and the Cooper-Hewitt National Design Museum.

## THE ARTIST'S PLACE GREEN ROOM

**Chair:** Christine Hamilton

**Dana Whabira** was born in London and grew up in Zimbabwe. She is a trained architect and studied art and design at Central Saint Martin's College in London. In May 2013, Whabira founded Njelele Art Station, an experimental project space in downtown Harare, Zimbabwe that focuses on contemporary art media. Njelele Art Station is an urban laboratory and form of urban intervention, its proximity to the street creates a socially-engaged dynamic space that supports participatory practice through projects that involve and interact with the local community and general public.

**Leónidas Martín Saura** is a Professor at Barcelona University where he teaches video, new media and political art. He also lectures and holds seminars as a visiting professor at other universities in various countries. For many years he has been developing collective projects between art and activism, many of them well known internationally. He also writes about art and politics for cultural blogs, journals and newspapers. As a video maker he has created several documentaries and movies for television and internet, and he is a member of the cultural collective Enmedio.

**Sorcha Dallas** started her career with Glasgow based projects, being the co-founder and curator of the transient artist-run space Switchspace and running until 2011 her own permanent commercial gallery that offered a support structure for a new generation of emerging artists. Dallas has worked since as an independent curator, and established in 2012 the Alasdair Gray Foundation to preserve and promote the visual and literary work of this unique artist and writer. She is also a selector of the Young Gallery section at Art13, London's newest global art fair.

## THE ROLE OF THE ARTS SCHOOLS STRATHCLYDE SUITE

**Chair:** Muriel Gray

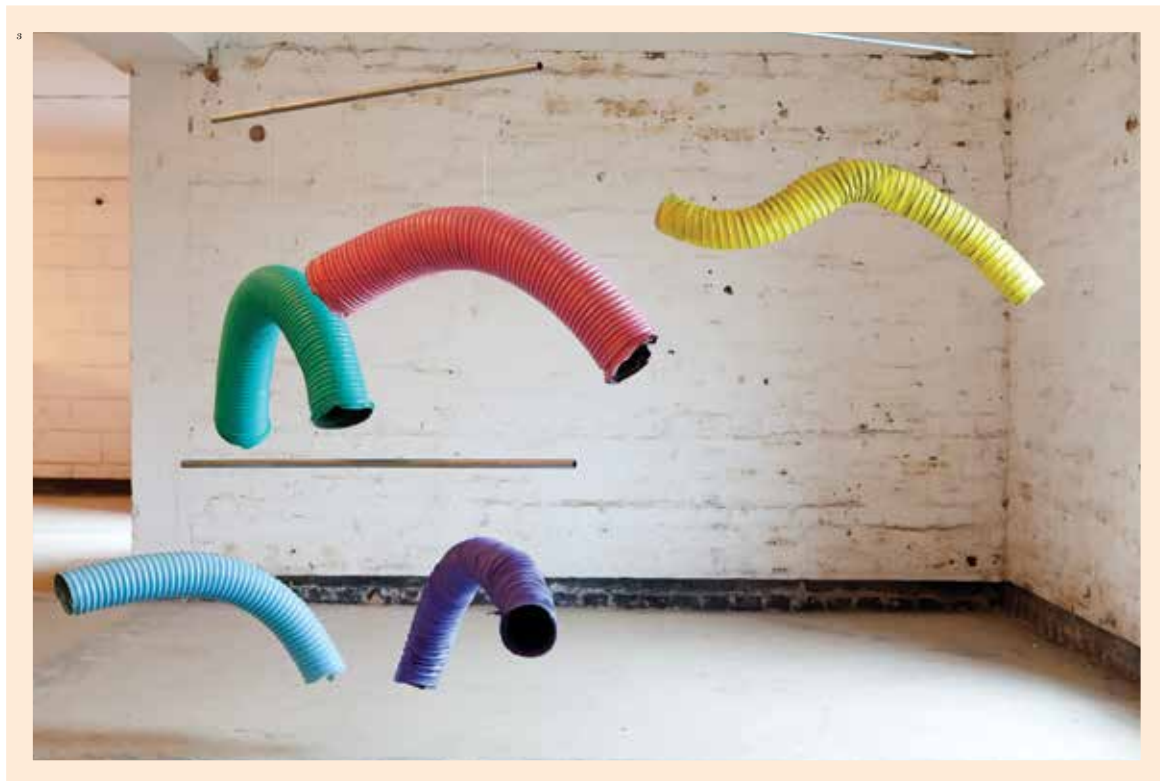
**Ron Burnett** has been involved in arts education for over 40 years and is President and Vice-Chancellor, Emily Carr University, Order of Canada, Chevalier de l'ordre des arts et des lettres and member of the Royal Academy of Canadian Art. He was Director of the Graduate Program in Communications at McGill University from 1986 to 1996, has published three books and over 100 articles in journals worldwide. Furthermore, he received a Outstanding Leadership Award International Digital Media Arts Association in 2010.

**Tom Inns** was appointed Director of The Glasgow School of Art in September 2013. He was previously Dean of Duncan of Jordanstone College of Art & Design (DJCAD), Director of Research for the College of Art Science & Engineering at the University of Dundee and appointed as Director of the UK Research Council funded, Designing for the 21st Century Research Initiative. He has a strong interest in the future of design and how design thinking can facilitate interdisciplinary discussions.

**Hilary Boulding** is principal of The Royal Welsh School College of Music and Drama, the National Conservatoire of Wales. Prior to taking up the post in 2007 she had worked as head of music strategy for the Arts Council of England and head of arts and music at BBC Wales.



**Images**  
 1/ *Boats tied in harbour*, Rachel A M Thomson, Communication Design, GSA  
 2/ RCS BA Production Arts  
 3/ *Composition II*, Freya Stockford, Painting + Printmaking, GSA



FRIDAY 14 NOVEMBER. 16:30-18:00  
 GLASGOW ROYAL CONCERT HALL:  
 EXHIBITION HALL, BUCHANAN SUITE,  
 GREEN ROOM, STRATHCLYDE SUITE

# THEMATIC SESSIONS

**Delegates can choose between four parallel thematic sessions,** in which selected presenters showcase innovative projects and case studies related to the theme.

## IDENTITY/DIVERSITY EXHIBITION HALL

**Chair:** Celia Duffy

### Location, Aesthetics and History

**Presenter:** Anna Birch

**Institution:** Royal Conservatoire of Scotland

**Country:** United Kingdom

### 'Stop leaning against the wall – it's wet' (Banksy): The Limits of Urban Visual Practice?

**Presenter:** Inga Bryden

**Institution:** University of Winchester, Faculty of Arts

**Country:** United Kingdom

### Border Crossing: The Dynamic Interplay between Place, Culture and Creativity

**Presenter:** Andy Milligan

**Institution:** Duncan of Jordanstone College of Art & Design, University of Dundee

**Country:** United Kingdom

## REGIONALISM/GLOBALISM BUCHANAN SUITE

**Chair:** Thera Jonker

### Social Innovation in Urban Design: From Blue-Print to Storytelling and Placemaking

**Presenter:** Marc Glaudemans

**Institution:** Fontys School of Fine and Performing Arts

**Country:** The Netherlands

### The dichotomy and the in-between: Pacific and Eastern perspectives on the challenge of globalised aesthetic

**Presenter:** Nancy de Freitas

**Institution:** Faculty of Design and Creative Technologies, AUT University

**Country:** New Zealand

### Deglobalizer

**Presenter:** Paolo Cardini

**Institution:** Industrial Design Department, RISD- Rhode Island School of Design

**Country:** United States

## HOMECOMING/NOMADISM GREEN ROOM

**Chair:** Stephen Broad

### There and Back and There Again

**Presenter:** Jeremy Diggie

**Institution:** Royal Melbourne Institute of Technology

**Country:** Australia

### Guerilla Art-Interventions in the Public Domain: The power of informal education in the field of creative industries

**Presenter:** Renske de Groot

**Institution:** Fontys School of Fine and Performing Arts

**Country:** The Netherlands

### Location Aesthetics: Experiencing a period of extraordinary transformation

**Presenter:** Kit Thompson

**Institution:** University of Macau, Moon Chun Memorial College

**Country:** Macau, China

## ECONOMY/CULTURE STRATHCLYDE SUITE

**Chair:** Ken Neil

### Car Dealing and Making Art – are there similarities?

**Presenter:** Naomi Sex

**Institution:** Dublin Institute of Technology, School of Art, Design and Printing

**Country:** Ireland

### Community, Identity and Locality: sustainability & impact of university-housed, small-scale arts centres

**Presenter:** Carola Boehm, Jane Linden and Jodie Gibson

**Institution:** Manchester Metropolitan University, Faculty of Art & Design, Department of Contemporary Art

**Country:** United Kingdom

### Building Bridges Between Performance and Organisational Studies: how to gain a new strategy for an art institute

**Presenter:** Jacqueline Holzer

**Institution:** Zurich University of the Arts

**Country:** Switzerland

### Embracing Conversations around 'Social Objects' – how this is reconfiguring design education

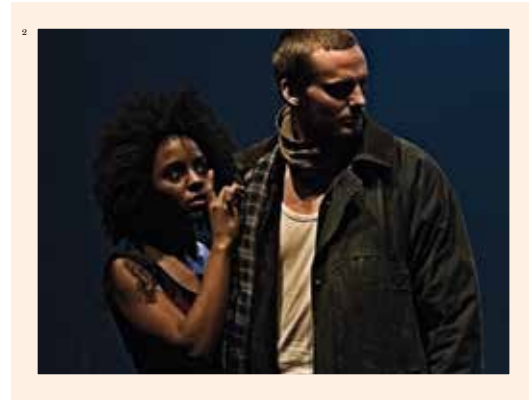
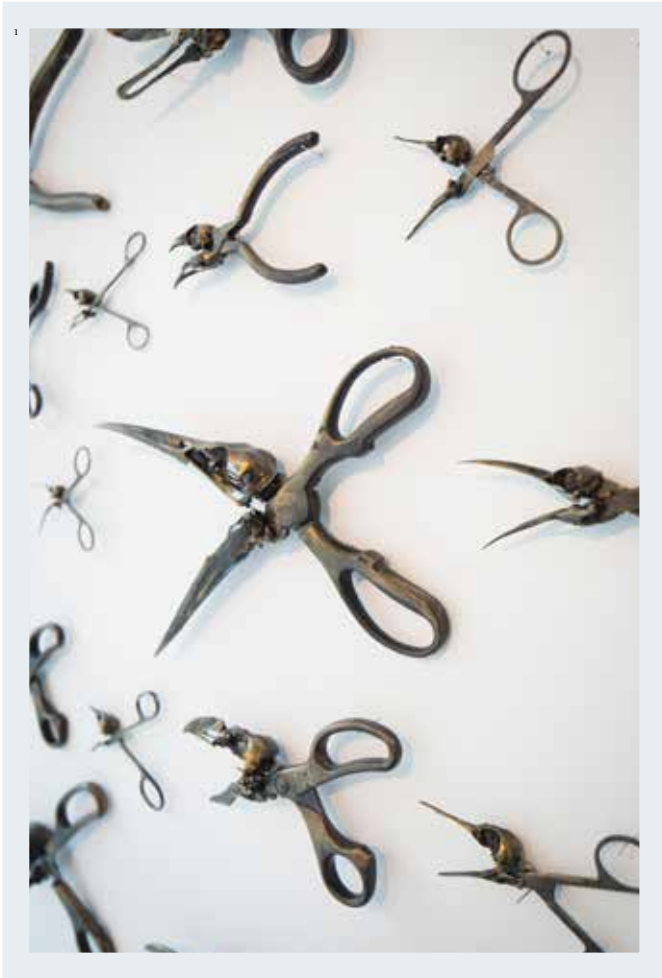
**Presenter:** Brenda Duggan

**Institution:** Dublin Institute of Technology, School of Art, Design and Printing

**Country:** Ireland

**Images**

- <sup>1/</sup> *Darwin's Homology Theory*, Catherine Lafferty, Communication Design, GSA
- <sup>2/</sup> *RCS. Images*: KKDundas
- <sup>3/</sup> *Untitled*, Emma Coulter-Aitken, Painting + Printmaking, GSA



SATURDAY 15 NOVEMBER. 14:30-18:00  
 THE GLASGOW SCHOOL OF ART, REID BUILDING  
 & ROYAL CONSERVATOIRE OF SCOTLAND

# OPEN SPACE

**The Open Space Programme** is intended to accommodate requests from ELIA members for networking, discussion, sharing of experiences and information, and the starting of new initiatives.



Several parallel sessions focusing on specific topics or disciplines will be organised by ELIA and Partners in the following categories: **Network, Thematic and ELIA Sessions.**

The **Network Sessions** are organised by ELIA Partners and will address specific themes and topics in their field of expertise, as well as accommodate networking and sharing information and experiences. During the **Thematic Sessions** selected delegates present their own works, projects or anything else they are passionate about and want to bring to the public eye at the conference. The **ELIA Sessions** are workshops, providing more information on the topic, as well as offering the opportunity to ask questions and to have individual consultations.

*Please note: between 16.00–16.30 there will be a coffee break in the foyer of the Royal Concert Hall*

## NETWORK SESSIONS CUMULUS

**International Association of Universities and Colleges of Art, Design and Media**

14:30–16:00

The Glasgow School of Art: Reid Building, Directorate Meeting Room

This session addresses Drawing as Tool for interdisciplinary sharing, by letting delegates experience this themselves and a lecture that discusses the interplay between the one that draws and places, culture, creativity and identity. In addition, there will be time for discussion, questions and answers.

**Presenter:** Marja Nurminen

## PARADOX

**The Fine Art European Forum**

16:30–18:00

Royal Conservatoire of Scotland, Rehearsal Room 3

Based on the findings of the biannual Paradox Fine Arts European Forum Conference held in Granada in September 2013, this session will further elaborate on the implications and consequences of social, economic and cultural changes on the fine art practice, research and higher education- as well as the ideas that connect the arts to their contexts in the world. After a presentation which highlights the many queries raised during the biannual Paradox Fine Arts European Forum Conference, delegates participate in a discussion to address the main questions.

**Presenter:** Ana García López

## THEMATIC SESSIONS ARTISTIC RESEARCH

14:30–18:00

The Glasgow School of Art: Reid Building, Auditorium

**Occupy Bologna: Architecture, Design and Fine Arts as Epistemic Cultures in the Making**

**Presenter:** Priska Gisler and Elke Bippus, Zurich University of the Arts, Institute of Critical Theory (CH)

**The role of a university of the arts within transformational economies**

**Presenter:** Rolf Hughes, Stockholm University of the Arts (SE)

**THE HETEROTOPOETIC – About Space and Competence Regarding an Undisciplined Approach**

**Presenter:** Alexander Damianisch, University of applied Arts Vienna (AT)

**PARSE – A new international platform for Art & Research**

**Presenters:** Ingrid Elam, Mick Wilson, University of Gothenburg (SE)

**Architecture and the City**

**Presenters:** Johan Verbeke, KU Leuven and Aarhus School of Architecture (BE, DK), Sally Stewart, Mackintosh School of Architecture at The Glasgow School of Art (UK), Claus Peder Pedersson, Aarhus School of Architecture (DK)

## PERFORMING ARTS

16:30–18:00

Royal Conservatoire of Scotland, Movement Room 1

**Metaphysical Longings VI**

**Presenter:** Clodagh Emoe, Dun Laoghaire Institute [IADT] and GradCAM/DIT (IE)

**The Artist's Voice: roots/routes**

**Presenters:** Hilary Jones, Ros Steen, Royal Conservatoire of Scotland (UK)

**Dialectical Collaborative Theatre**

**Presenter:** Jo Ronan, University of the West of Scotland and Royal Central School of Speech & Drama (UK)

**Socially Engaged is Not Social Work:**

**The Voice of the Practitioner**

**Presenters:** Anthony Schrag, Alexia Melior, Newcastle University (UK)

## VISUAL & FINE ARTS

14:30–16:00

The Glasgow School of Art: Reid Building, Principal Seminar Room

**Trust and Dialogue in the Participatory Practice of Esther Shalev-Gerz**

**Presenter:** Jason Bowman, University of Gothenburg (SE)

**Locating Aesthetics in the Economy of the Visual**

**Presenters:** Helen Gorrill, Coventry University (UK) and Judith Mottram, School of Material, the Royal College of Art (UK)

**Disrupted Stratas – Christchurch Project**

**Presenter:** Derrick Cherrie, Elam School of Fine Arts, University of Auckland (NZ)

## ELIA SESSIONS EQ ARTS

14:30–16:00

The Glasgow School of Art: Reid Building, General Seminar Room

This session will give information on the latest developments on quality assurance and enhancement in the European Higher Education Area and presents in a workshop setting the ELIA EQ-Arts services such as institutional and/or subject peer review by an international panel of trained and experienced experts. There will be time for questions and answers, as well as for individual consultations.

**Presenter:** Lars Ebert

## EUROPEAN PROGRAMMES

16:30–18:00

Royal Conservatoire of Scotland, Rehearsal Room 4

This interactive workshop provides up to date information on European funding programmes and policies. There will be time for questions and answers, as well as for individual consultations.

**Presenter:** Truus Ophuijsen

## CULTURAL ENTREPRENEURSHIP

16:30–18:00

Royal Conservatoire of Scotland, Rehearsal Room 2

The session will provide information about the dimensions of cultural entrepreneurship in Europe and its implications for universities, organisations, alumni and students. The session will provide practices, and applied examples. The critical reflection of the term “entrepreneurship” and the possibilities to create and discuss the layer of an alternative economy beside a classic business-model will be part of the session.

**Presenter:** Georg Russegger

THROUGHOUT THE CONFERENCE

# CULTURAL EVENTS

During **LOCATION** ⇒ **AESTHETICS** delegates are invited to attend a number of cultural events and happenings around the city.

## TOURS OF THE GLASGOW SCHOOL OF ART AND ROYAL CONSERVATOIRE OF SCOTLAND

**Wednesday 12 November**

14.00–16.00

The Glasgow School of Art and Royal Conservatoire of Scotland give delegates the opportunity to see behind the scenes, experience their unique atmosphere and discover more about the hosts of the 13th ELIA Biennial Glasgow. Delegates can choose to visit either one or both institutions. The tours start at 14.00, at 15.00 and at 16.00 and can accommodate up to 20 participants each. Depending on which tour delegates wish to attend, the meeting point is The Glasgow School of Art: Reid Building or Royal Conservatoire of Scotland.

## CIVIC RECEPTION

**Thursday 13 November**

19.00–21.00

Glasgow City Hall

Participants of the ELIA Biennial Conference are invited to attend the Civic Reception at the Glasgow City Chambers, hosted by the Lord Provost of the city. A buffet dinner will be served and the official invitation is included in the delegates' bag.

## CLOSING PARTY

**Saturday 15 November**

21.00–01.00

Students' Association

During the closing party, both the participants of the conference and NEU/NOW will have the opportunity to meet, dance and relax during a live music event organised by the student association of The Glasgow School of Art. There will be drinks, a traditional Scottish Ceilidh and several DJs.

Please notice an additional €20 fee (€5 fee for students) is required and tickets can be purchased from 20.30 at the door of the students' association at the night itself. Tickets bought during the online registration are included in your personal registration envelope.

## NEU/NOW

NEU/NOW is an innovative international platform for talented graduating and recently graduated artists across disciplines. Participants are nominated by higher arts education institutions and universities across Europe and beyond and selected by an international jury of experts to present themselves to a wider international audience within a professional arts context. This year, the NEU/NOW will run alongside the ELIA Biennial Conference in Glasgow. For more information, see [www.neunow.com](http://www.neunow.com) and the programme included in the delegates' bag.

THROUGHOUT THE CONFERENCE

# MEMBERS' EVENTS

Members of ELIA are invited to join us for a series of networking, sharing and discussion events. Open to members only.

## **ELIA NEW MEMBERS' MEETING**

**Thursday 13 November**

18:00–19:00

Royal Conservatoire of Scotland: Boardroom

ELIA extends a warm welcome to its new members, who are invited to attend this informal meeting. The purpose of the meeting is to get acquainted with ELIA activities, get introduced to ELIA Representative Board members and staff, share, discuss, network and to experience the advantages of ELIA membership on the spot.

## **GENERAL ASSEMBLY**

**Saturday 15 November**

09:30–13:00

The Glasgow School of Art

Reid Building: Auditorium

The ELIA General Assembly will be held on Saturday morning at The Glasgow School of Art, Reid Building in the auditorium. While the ELIA Conference is open to all delegates, the General Assembly is a forum that is restricted to ELIA members only. We kindly ask delegates who are authorised to attend or vote during the General Assembly, to register on time due to logistic reasons. The registration opens at 8.30 and the agenda, as well as relevant papers, will be distributed separately.

THROUGHOUT THE CONFERENCE

# SPEAKERS' BIOGS

Further details and biographies for the speakers who are joining us for the Conference.

## PIER LUIGI SACCO

Pier Luigi Sacco is Professor of Cultural Economics and Deputy Rector for International Affairs at IULM University in Milan, Director of Siena its candidacy for the European Capital of Culture 2019 and recently appointed as Scientific Director of the Fondazione Campus. His work covers the topics of economic theory, game theory, cultural economics, the creative industries and cultural policy design at the urban, regional and national level and he is the author of more than one hundred and fifty papers, which appeared in international journals and edited books of major scientific publishers such as Oxford University Press, Cambridge University Press, Elsevier and Springer. In addition, he does extensive consultancy and advisory work for governments, local administrations and cultural institutions on the issues of culture-led local development and European Capital Culture Programmes.

## GEOFFREY CROSSICK

Professor Geoffrey Crossick is Director of the AHRC's Cultural Value Project and Distinguished Professor of Humanities in the School of Advanced Study at the University of London. In 2014 he was appointed Chair of the Crafts Council. His previous posts include Vice-Chancellor of the University of London (2010-12), Warden of Goldsmiths, University of London (2005-10), and Chief Executive of the Arts and Humanities Research Board (2002-05) which he led through its transformation into a full research council. He is a historian and his main area of research has been the urban social history of 19th and 20th century Britain and continental Europe. He has written and spoken extensively in the UK and internationally on the creative and cultural sectors, on the importance of the arts and humanities, and on higher education and research strategy. He is a member of the governing boards of the Courtauld Institute and the Horniman Museum, and Chair of the Board of Trinity Long Room Hub, the arts and humanities research institute of Trinity College Dublin. He is an Honorary Fellow of Emmanuel College, Cambridge.

## JOSETTE BUSHELL-MINGO

Josette Bushell-Mingo OBE studied performing arts at Barking College of Technology and is a Swedish-based English theatre director and actress. She is currently the artistic director for The Swedish National Touring Theatre ensemble. Her production of *The Odyssey*, performed in Swedish Sign Language received huge critical acclaim in Scandinavia. It was while appearing as Rafiki in the London production of *The Lion King*, for which she was Olivier-nominated as Best Actress in Musical, that Bushell-Mingo became troubled that more of her peers were not enjoying the same chances for success. To counter this, in 2001 she co-founded at the Young Vic a black-led arts festival called PUSH, with the aim of inspiring diversity and promoting more Black artists into mainstream British arts. She was made an Officer of the Order of the British Empire in 2006 and is one of the nine board members of the Swedish Film Institute.

## MARTIN BOYCE

Martin Boyce is a Scottish sculptor and multimedia installation artist inspired by early 20th century modernism, who studied at the Glasgow School of Art in the late 1980s. He won in 2011 the Turner Prize for his installation *Do Words Have Voices*, displayed at the Baltic Centre for Contemporary Art in Gateshead. The installation is a recreation of a park in autumn. He is in particular interested in the psychological experience of space, abandoned or abject terrains, and the material manifestations of time. He borrows the forms of objects found in daily indoor and outdoor settings, such as wire gates, lights, trees, benches, tables, and trash bins. Boyce then reduces, skews, and abstracts these shapes such that they feel familiar but are not immediately recognisable. Recurring motifs include wire fences, glyph-like shapes, and alternating use of flowing curves or angular geometry. In tandem with his installations, Boyce has cultivated an immense archive of photographic works detailing images that inform his practice.

THROUGHOUT THE CONFERENCE

# PRACTICAL INFO

Useful telephone numbers and information for delegates.

056

## GENERAL INFORMATION DESK

The information desk is located in the foyer of the Glasgow Royal Concert Hall and will be open throughout the conference. In the event that you need urgent assistance outside of conference hours, you can call the **ELIA mobile phone**: +31 (0)6 5491 7106.

## INTERNET

Wireless Internet access will be provided in all conference venues. You can find information on how to obtain access to the wireless network in a separate document in your conference bag or at the registration desk.

## USEFUL NUMBERS

**Police:** Emergency 999

**Medical Help:** NHS 24 hour helpline  
freephone number 111

**NHS Minor Ailment Service** is available at every pharmacy in Scotland.

## TRANSPORT

**Glasgow Airport:**  
+44(0)844 481 5555

**Glasgow Prestwick Airport:**  
+44(0)871 223 0700

**Glasgow Wide TOA Taxis ('black cabs'):**  
+44(0)141 429 7070

**National Rail Enquiries:**  
+44(0)845 748 4950

**Tourist information:**  
+44(0)141 204 4400

**Travel line Scotland:**  
+44(0)871 200 2233

## PUBLIC TRANSPORT

**Nearest underground to venues:** Cowcaddens

**Nearest suburban train station:** Charing Cross

**Mainline stations:** Queen Street and Glasgow Central

## GLASGOW AND SCOTLAND

### PEOPLE MAKE GLASGOW

Official website for Glasgow.  
Guide book, maps, what's on and more  
[www.peoplemakeglasgow.com](http://www.peoplemakeglasgow.com)

### VISITSCOTLAND

Come and discover Scotland, world-famous for its awesome scenery, vibrant culture and spectacular heritage. It's a land packed with brilliant moments, those sights, sounds and experiences that make your break truly memorable, especially in 2014, our Year of Homecoming. You're invited to join our year-long celebration of all that makes Scotland great and an amazing place to visit. Plan your break with great accommodation deals, helpful travel advice and inspiring ideas for what to see and do.  
[www.visitscotland.com](http://www.visitscotland.com)

057

**CONFERENCE STEERING COMMITTEE****Emanuelle Amodei**

Palazzo Spinelli Istituto per l'Arte e il restauro,  
Florence, Italy

**Gerald Bast**

Die Angewandte-University of Applied  
Arts Vienna, Austria

**Stephen Broad**

Royal Conservatoire Scotland, Glasgow, Scotland

**Kieran Corcoran**

Dublin Institute of Technology, School of Art,  
Design and Printing, Ireland

**Carla Delfos**

ELIA – European League of Institutes  
of the Arts, Amsterdam, the Netherlands

**Linda Drew**

The Glasgow School of Art, Glasgow, Scotland

**Maggie Kinloch**

Royal Conservatoire Scotland, Glasgow, Scotland

**Scott Parsons**

The Glasgow School of Art, Glasgow, Scotland

**CONFERENCE ORGANISERS****Marte Brinkman**

Interim Conference Manager, ELIA – European  
League of Institutes of the Arts, Amsterdam,  
the Netherlands

**Kate Hollands**

Alumni & Events Manager,  
The Glasgow School of Art, Glasgow, Scotland

**Amy-Beth Jordan**

Corporate Events and Conferences Manager,  
Royal Conservatoire Scotland, Glasgow, Scotland

**Jennifer Knotts**

Corporate Events and Conferences Assistant,  
Royal Conservatoire of Scotland, Glasgow, Scotland

**Barbara Revelli**

Conference Manager, ELIA – European League  
of Institutes of the Arts, Amsterdam, the Netherlands

**GRAPHIC DESIGN**

**D8** [www.weared8.com](http://www.weared8.com)

**ART DIRECTION****Kirsty L. Barr**

The Glasgow School of Art, Glasgow, Scotland

**Stephen Cappello**

D8, Glasgow, Scotland

**INTERIOR DESIGN****Melba Beetham****Tony Coffield****Tony Kernan****Year 2 Interior Design students,**

The Glasgow School of Art

**ILLUSTRATIONS****Jessica Taylor**

Communication Design

The Glasgow School of Art

[cargocollective.com/jessica\\_taylor](http://cargocollective.com/jessica_taylor)

**ACKNOWLEDGEMENTS**

ELIA is supported, among others, by its members and  
by the European Commission.

**SPONSORS**

The conference organisers are very grateful for the  
support secured from:

**The Royal Concert Hall Glasgow**  
**D8**

**PARTNER INSTITUTIONS**

**Royal Conservatoire of Scotland**  
**The Glasgow School of Art**



**THE GLASGOW  
SCHOOL OF ART**

  
Royal Conservatoire  
of Scotland



**PEOPLE  
MAKE  
GLASGOW**



**D8.**

This project is funded with support from the European Commission. This publication reflects the views only of the author, and the Commission cannot be held responsible for any use which may be made of the information contained therein.

THROUGHOUT THE CONFERENCE

# CONFERENCE NOTES

060

NOTES

061











**Images (right)**  
RCS Contemporary Performance  
Practice/ Timorous Beasties,  
Omni Drips print on red  
wallpaper panels

**Images (back cover)**  
Timorous Beasties, Thistle Print  
on Red Wallpaper

