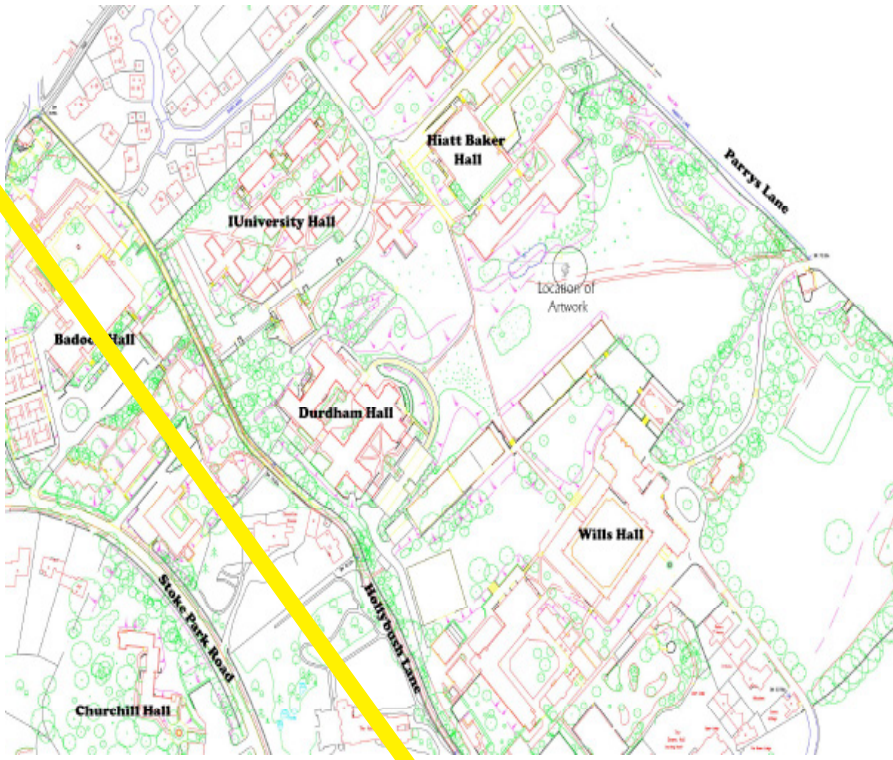
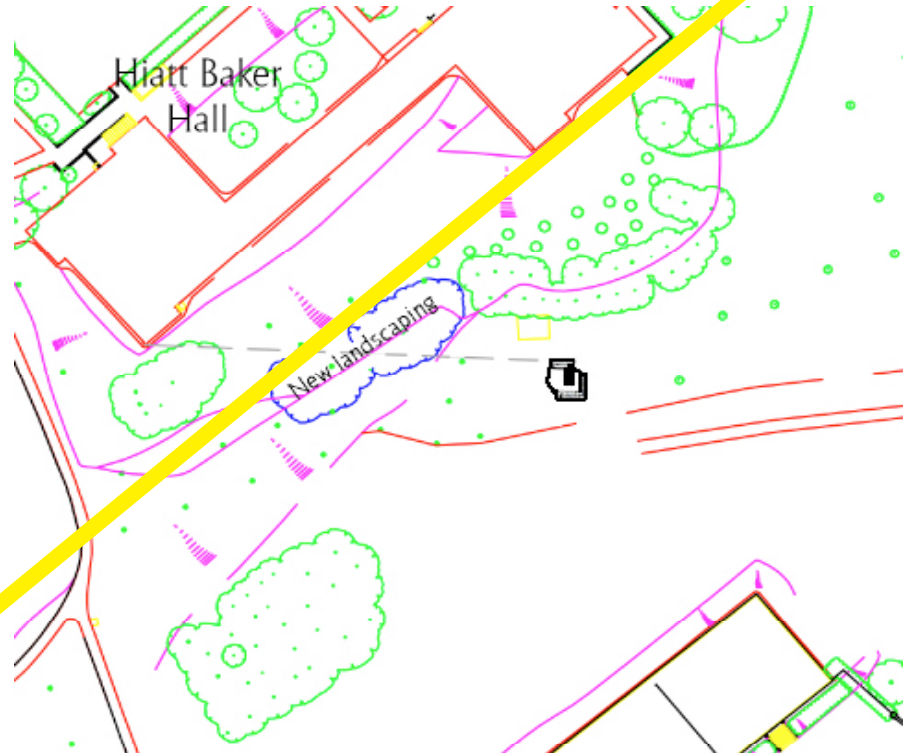


'EDITH & HANS' A SOCIAL SPACE FOR STOKE BISHOP STUDENTS

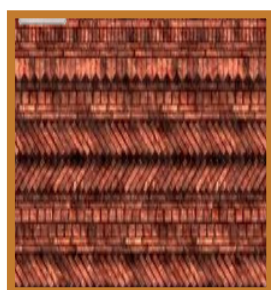
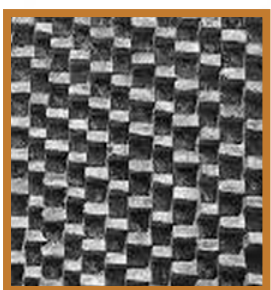
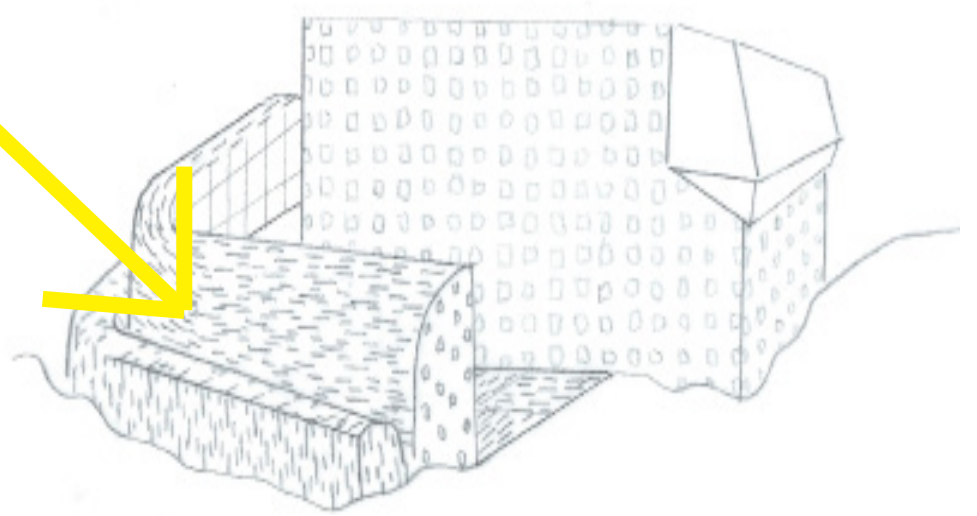
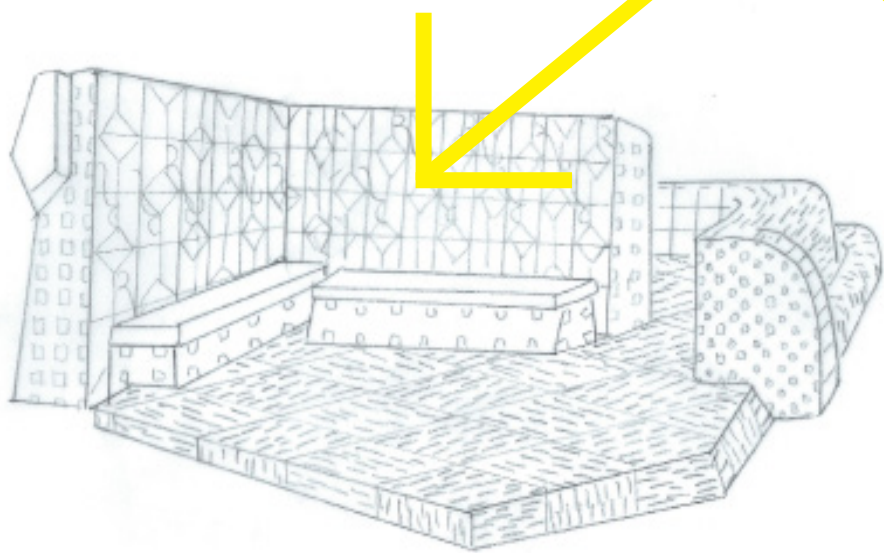
SUNSHINE & MEADOW



SUNSHINE & BRICK



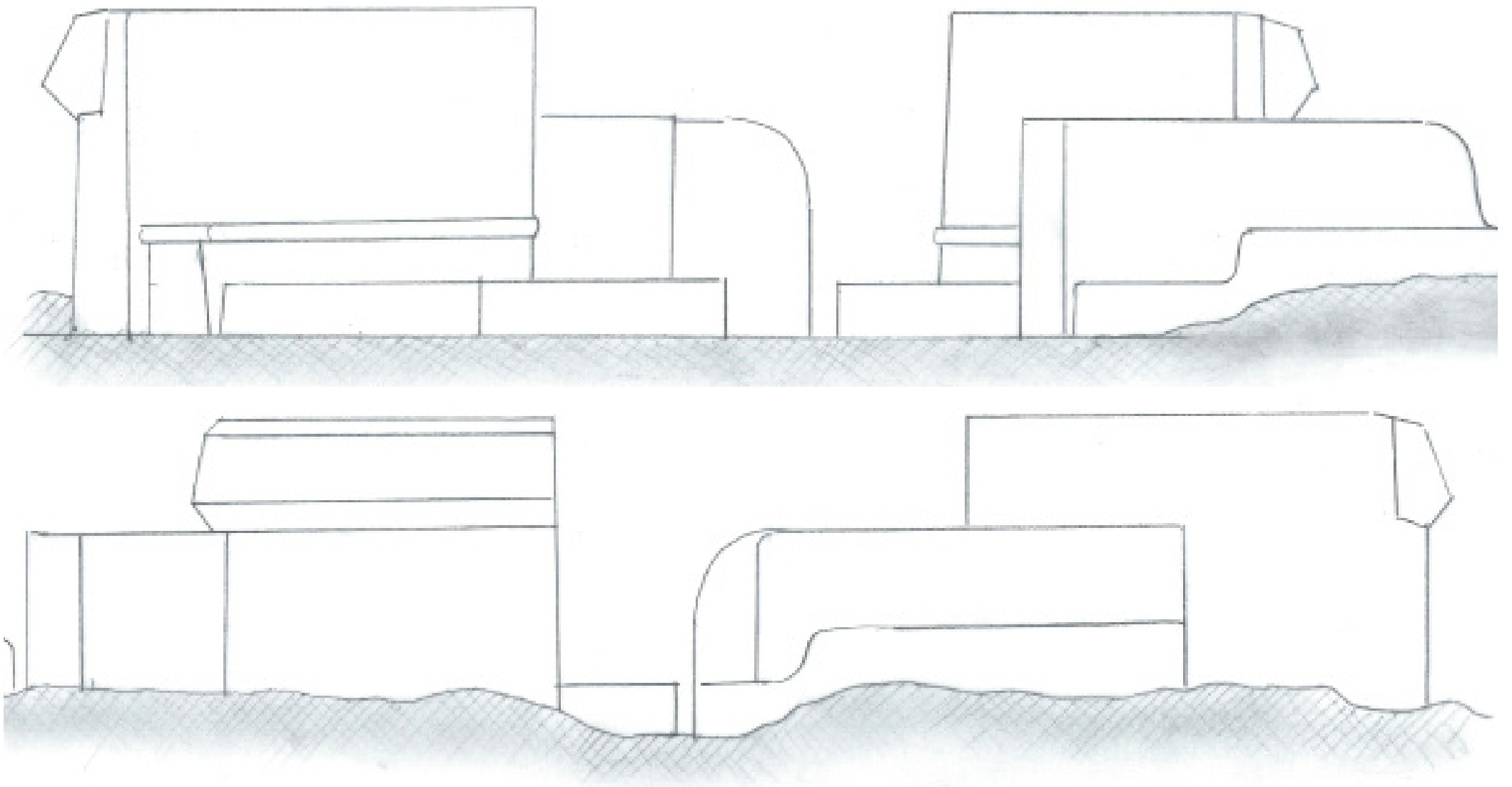
HEAT ON BRICK



‘ EDITH & HANS ’

Bristol University has appointed acclaimed artist Sarah Staton to make a permanent work for its residential site in Stoke Bishop. Sarah’s appointment is the second phase of the University’s public art strategy developed specifically for the historic gardens and parkland of the residential campus, home to Bristol University’s Botanic Garden. The commission makes both physical and social connections to the built and natural environment and will develop greater use of the public areas across the site.

Sarah Staton creates artwork that combines a sculptor’s sensibility with design, landscape and architecture. She has made work for the New Art Gallery Walsall, Tate Modern and the Victoria & Albert Museum. She is Senior Tutor in Sculpture at the Royal College of Art, London and recently completed a major new work for the Folkestone Triennial.



Sarah proposes ‘Edith and Hans’ a textured sculpture and seating area for the students at Stoke Bishop. It will be built this summer in the sometime sun-soaked meadow between Hiatt Baker and Wills. The sculpture takes the form of two ‘L’ shaped double walls that will capture sunshine and heat. Built from intricate brickwork they will work like a hot stone becoming a joyful place to linger on warm summer evenings. As an artwork, ‘Edith and Hans’ sits somewhere between a ruin and an archaeological find. The sculpture is a contemporary folly that makes multiple references to both its historic site and the Strawberry Gothic architecture of Wills nearby, and the contemporary context of Hiatt Baker and the residential halls.

Why ‘Edith and Hans’? The sculpture is a personal tribute to the artist’s Grandmother, Edith, who taught her to sew, and her brother, Hans, who lived his life among art, both with Bristol connections. Hans Shubart was Director of Bristol’s Museum and Art Gallery between 1953 and 1968. Of German descent, Edith and Hans were world citizens, born in Hong Kong at the end of the 19th century and between them living in mainland China, Austria, USA and England. Hans knew the Wills and the Hiatt Baker families as they were collectors and patrons of the Bristol Museum and Art Gallery.

'EDITH & HANS' A SOCIAL SPACE FOR STOKE BISHOP STUDENTS

This artwork is commissioned and produced by Field Art Projects on behalf of the University of Bristol.

If you would like further information about the public art strategy for Stoke Bishop and Sarah Staton's commission please go to the Public Art section of www.bris.ac.uk/estates/projects/stoke-bishop/ And further information about the artist can be found at www.sarahstaton.net

Please leave your comments on the feedback sheet, via email info@fieldartprojects.com by 15 May 2015.

YOUR COMMENTS

A large area of dotted lines for writing comments.

PLEASE SHARE YOUR THOUGHTS

A large area of dotted lines for sharing thoughts.

